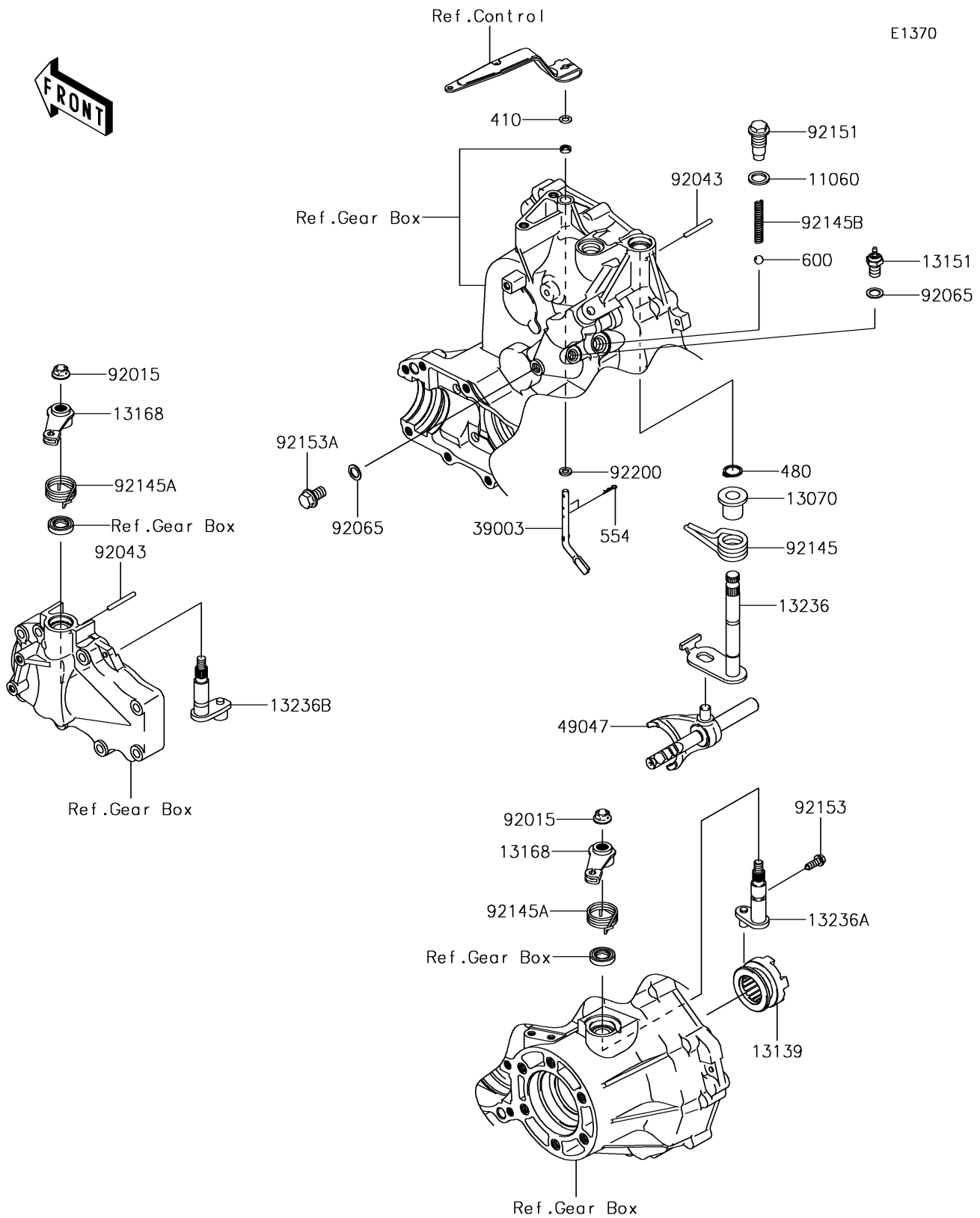


2017 MULE SX™ 4x4 SE PARTS DIAGRAM

Gear Change Mechanism

E1370



2017 MULE SX™ 4x4 SE PARTS LIST

Gear Change Mechanism

| ITEM NAME | PART NUMBER | QUANTITY |
|---------------------------------------|-------------|----------|
| GASKET,14X20X2 (Ref # 11060) | 11060-1287 | 1 |
| GUIDE (Ref # 13070) | 13070-0030 | 1 |
| SHIFTER,DIFF LOCK (Ref # 13139) | 13139-0008 | 1 |
| SWITCH-COMP,NEUTRAL (Ref # 13151) | 13151-1080 | 1 |
| LEVER,DIFF LOCK (Ref # 13168) | 13168-1523 | 1 |
| LEVER-COMP,FR/RR (Ref # 13236) | 13236-0036 | 1 |
| LEVER-COMP,DIFF LOCK (Ref # 13236A) | 13236-0037 | 1 |
| LEVER-COMP,2WD/4WD (Ref # 13236B) | 13236-0168 | 1 |
| ARM-PIVOT,GOVERNOR (Ref # 39003) | 39003-1053 | 1 |
| WASHER-PLAIN-SMALL (Ref # 410) | 410AA0600 | 1 |
| CIRCLIP-TYPE-C,13MM (Ref # 480) | 480J1300 | 1 |
| ROD-SHIFT,FR/RR (Ref # 49047) | 49047-0013 | 1 |
| PIN-SNAP,1.2X21.2 (Ref # 554) | 554DA0600 | 1 |
| BALL-STEEL,5/16 (Ref # 600) | 600A1000 | 1 |
| NUT,FLANGED,8MM (Ref # 92015) | 92015-1406 | 1 |
| PIN,4X34.8 (Ref # 92043) | 92043-1579 | 1 |
| GASKET,10.5X16X1 (Ref # 92065) | 92065-058 | 1 |
| SPRING (Ref # 92145) | 92145-0146 | 1 |
| SPRING (Ref # 92145A) | 92145-0226 | 1 |
| SPRING,CHANGE POSITION (Ref # 92145B) | 92145-1297 | 1 |
| BOLT,CHANGE POSITION (Ref # 92151) | 92151-1687 | 1 |
| BOLT,6X16.6 (Ref # 92153) | 92153-0591 | 1 |
| BOLT,10X16 (Ref # 92153A) | 92153-0621 | 1 |
| WASHER,6.5X11.5X2.0 (Ref # 92200) | 92200-2029 | 1 |