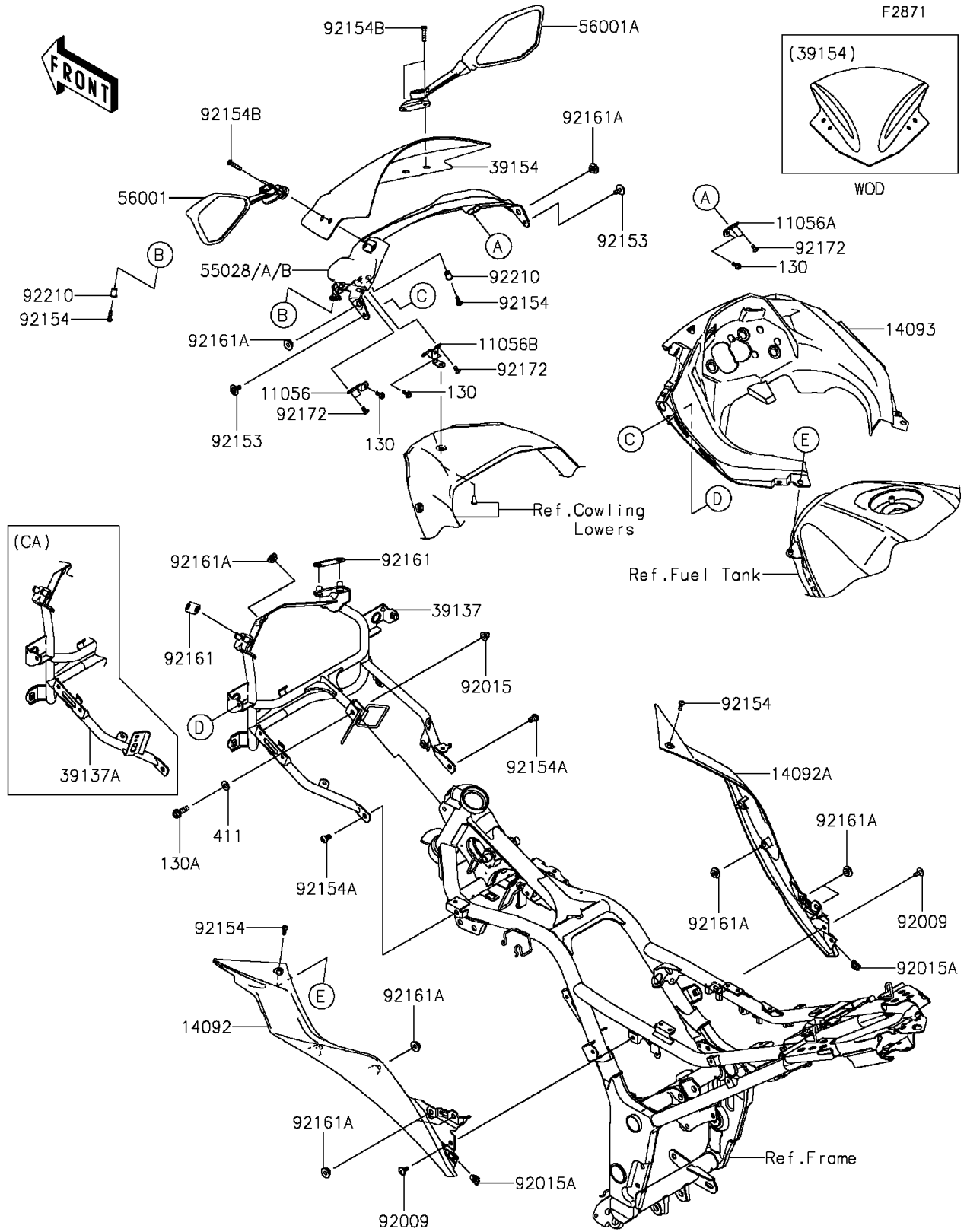


2015 Ninja® 300 SE PARTS DIAGRAM

Cowling



2015 Ninja® 300 SE PARTS LIST

Cowling

| ITEM NAME | PART NUMBER | QUANTITY |
|--|----------------|----------|
| BOLT-FLANGED,5X12 (Ref # 130) | 130BA0512 | 1 |
| BOLT-FLANGED,8X25 (Ref # 130A) | 130BB0825 | 1 |
| WASHER-PLAIN,8.5X18X1.6 (Ref # 411) | 411AB0800 | 1 |
| BRACKET,COWL. STAY,LH (Ref # 11056) | 11056-1608 | 1 |
| BRACKET,COWL. STAY,RH (Ref # 11056A) | 11056-1610 | 1 |
| BRACKET,COWL. STAY (Ref # 11056B) | 11056-1611 | 1 |
| COVER,TANK,LH (Ref # 14092) | 14092-0922 | 1 |
| COVER,TANK,RH (Ref # 14092A) | 14092-0923 | 1 |
| COVER,METER (Ref # 14093) | 14093-0249 | 1 |
| WINDSHIELD (Ref # 39154) | 39154-0318 | 1 |
| COWLING,UPP,EBONY (Ref # 55028) | 55028-0496-H8 | 1 |
| MIRROR-ASSY,LH (Ref # 56001) | 56001-0239 | 1 |
| MIRROR-ASSY,RH (Ref # 56001A) | 56001-0240 | 1 |
| SCREW,6X14 (Ref # 92009) | 92009-1662 | 1 |
| NUT,CAP,8MM,BLACK (Ref # 92015) | 92015-1174 | 1 |
| NUT,5MM (Ref # 92015A) | 92015-1627 | 1 |
| BOLT,6X16 (Ref # 92153) | 92153-1423 | 1 |
| BOLT,SOCKET,5X16 (Ref # 92154) | 92154-0182 | 1 |
| BOLT,SOCKET,8X14 (Ref # 92154A) | 92154-1032 | 1 |
| BOLT,SOCKET,6X25 (Ref # 92154B) | 92154-1142 | 1 |
| DAMPER (Ref # 92161) | 92161-1467 | 1 |
| DAMPER (Ref # 92161A) | 92161-1531 | 1 |
| SCREW,TAPPING,5X10 (Ref # 92172) | 92172-0262 | 1 |
| NUT,WELL,5MM (Ref # 92210) | 92210-0498 | 1 |
| STAY-COMP,COWLING,F.S.BLACK (Ref # 39137) | 39137-0565-18R | 1 |
| STAY-COMP,COWLING,F.S.BLACK (Ref # 39137A) | 39137-0566-18R | 1 |