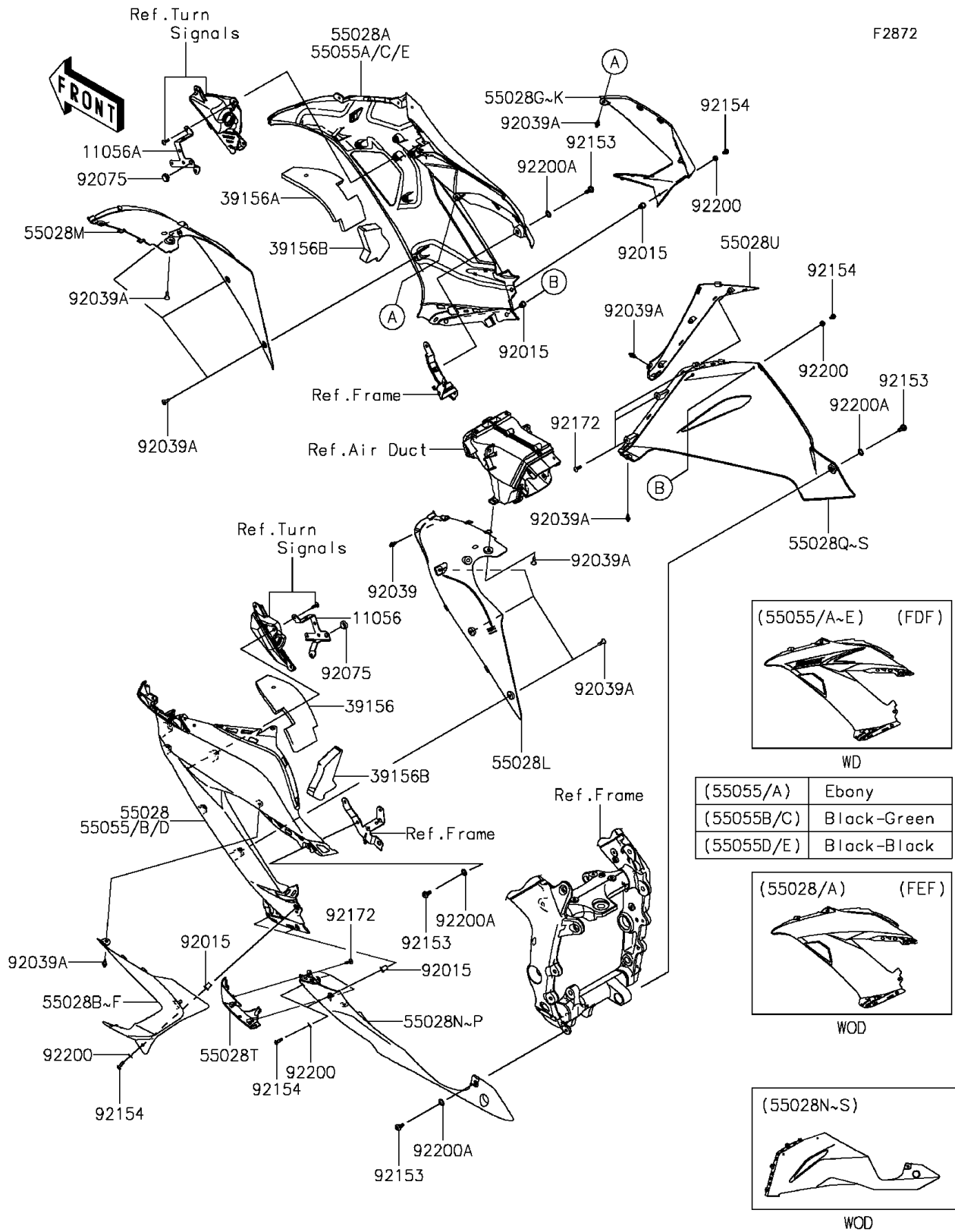


2013 NINJA® ZX™-6R ABS PARTS DIAGRAM

Cowling Lowers(FDF/FEF)

F2872



2013 NINJA® ZX™-6R ABS PARTS LIST

Cowling Lowers(FDF/FEF)

ITEM NAME	PART NUMBER	QUANTITY
BRACKET,SIDE COWLING,LH (Ref # 11056)	11056-2186	1
BRACKET,SIDE COWLING,RH (Ref # 11056A)	11056-2187	1
PAD,T10,COWLING LH (Ref # 39156)	39156-0944	1
PAD,T10,COWLING RH (Ref # 39156A)	39156-0945	1
PAD,T20 (Ref # 39156B)	39156-0958	1
COWLING,FIN,LH,P.F.S.WHITE (Ref # 55028C)	55028-0446-40X	1
COWLING,FIN,LH,F.EBONY (Ref # 55028D)	55028-0446-45L	1
COWLING,FIN,LH,L.GREEN (Ref # 55028F)	55028-0446-777	1
COWLING,FIN,RH,P.F.S.WHITE (Ref # 55028H)	55028-0447-40X	1
COWLING,FIN,RH,F.EBONY (Ref # 55028I)	55028-0447-45L	1
COWLING,FIN,RH,L.GREEN (Ref # 55028K)	55028-0447-777	1
COWLING,FR,LH (Ref # 55028L)	55028-0448	1
COWLING,FR,RH (Ref # 55028M)	55028-0449	1
COWLING,LWR,LH,P.F.S.WHITE (Ref # 55028N)	55028-0450-40X	1
COWLING,LWR,LH,F.EBONY (Ref # 55028O)	55028-0450-45L	1
COWLING,LWR,LH,L.GREEN (Ref # 55028P)	55028-0450-777	1
COWLING,LWR,RH,P.F.S.WHITE (Ref # 55028Q)	55028-0451-40X	1
COWLING,LWR,RH,F.EBONY (Ref # 55028R)	55028-0451-45L	1
COWLING,LWR,RH,L.GREEN (Ref # 55028S)	55028-0451-777	1
COWLING,LWR,FR,LH (Ref # 55028T)	55028-0452	1
COWLING,LWR,FR,RH (Ref # 55028U)	55028-0453	1
COWLING,SIDE,LH,F.EBONY (Ref # 55055)	55055-5128-45L	1
COWLING,SIDE,RH,F.EBONY (Ref # 55055A)	55055-5129-45L	1
COWLING,SIDE,LH,M.S.BLACK (Ref # 55055B)	55055-5130-660	1
COWLING,SIDE,RH,M.S.BLACK (Ref # 55055C)	55055-5131-660	1
COWLING,SIDE,LH,M.S.BLACK (Ref # 55055D)	55055-5132-660	1
COWLING,SIDE,RH,M.S.BLACK (Ref # 55055E)	55055-5133-660	1
NUT,WELL,5MM (Ref # 92015)	92015-1757	1
RIVET (Ref # 92039)	92039-0051	1

2013 NINJA® ZX™-6R ABS PARTS LIST

Cowling Lowers(FDF/FEF)

ITEM NAME	PART NUMBER	QUANTITY
RIVET (Ref # 92039A)	92039-0068	1
DAMPER (Ref # 92075)	92075-1983	1
BOLT,SOCKET,6MM (Ref # 92153)	92153-0489	1
BOLT,SOCKET,5X16 (Ref # 92154)	92154-0209	1
SCREW,TAPPING,5X10 (Ref # 92172)	92172-0262	1
WASHER,NYLONE,5.3X11.5X0.5 (Ref # 92200)	92200-0006	1
WASHER,10.4X15.9X0.5 (Ref # 92200A)	92200-0157	1