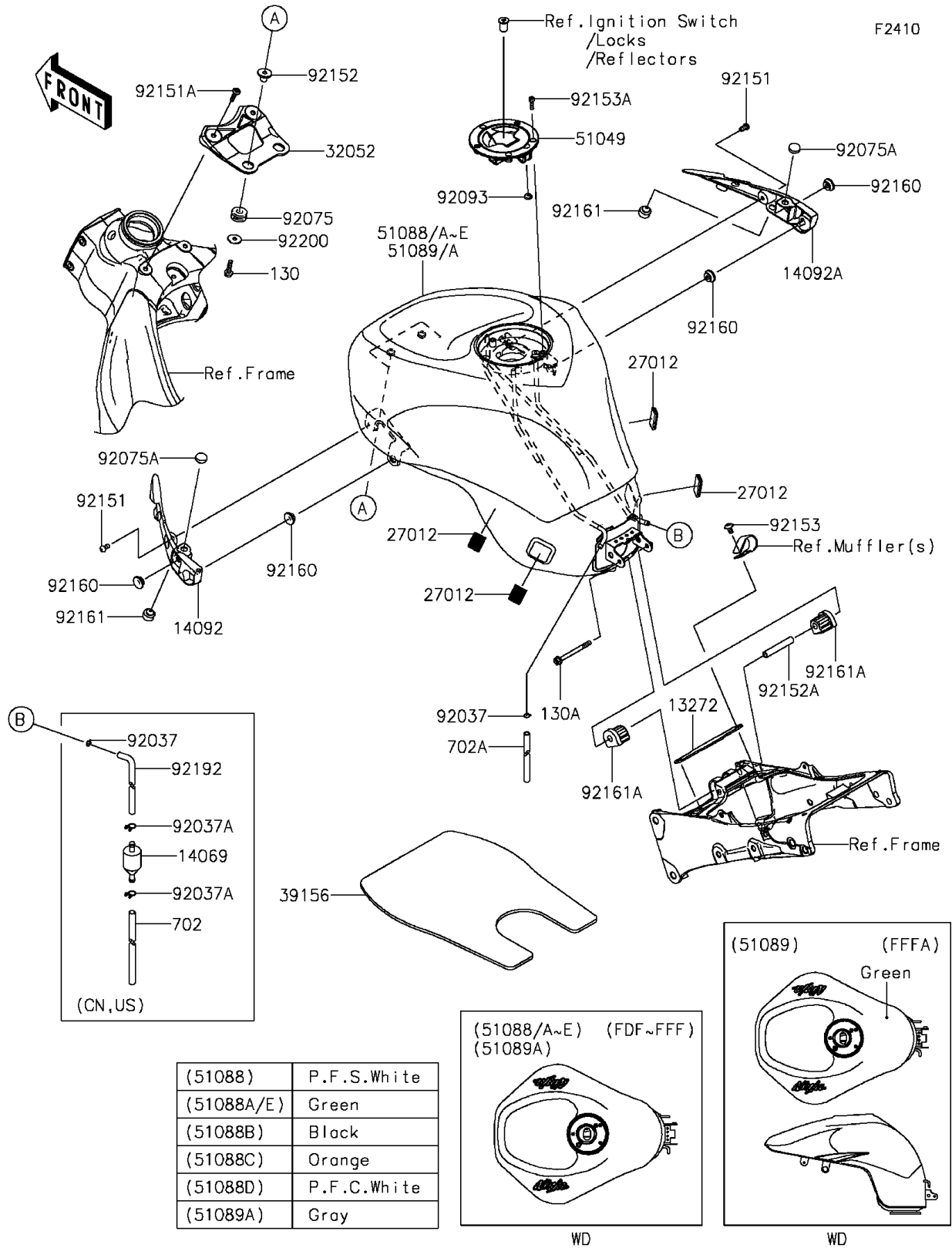


2013 NINJA® ZX™-6R ABS PARTS DIAGRAM

Fuel Tank



| | |
|------------|-------------|
| (51088) | P.F.S.White |
| (51088A/E) | Green |
| (51088B) | Black |
| (51088C) | Orange |
| (51088D) | P.F.C.White |
| (51089A) | Gray |

2013 NINJA® ZX™-6R ABS PARTS LIST

Fuel Tank

| ITEM NAME | PART NUMBER | QUANTITY |
|--|----------------|----------|
| PLATE,FUEL TANK,RR (Ref # 13272) | 13272-0505 | 1 |
| COVER,TANK,LH (Ref # 14092) | 14092-1087 | 1 |
| COVER,TANK,RH (Ref # 14092A) | 14092-1088 | 1 |
| HOOK (Ref # 27012) | 27012-0115 | 1 |
| BRACKET-TANK (Ref # 32052) | 32052-0727 | 1 |
| PAD,FUEL TANK (Ref # 39156) | 39156-0469 | 1 |
| CAP-TANK,FUEL (Ref # 51049) | 51049-0039 | 1 |
| TANK-COMP-FUEL,P.F.S.WHITE (Ref # 51088) | 51088-5045-40X | 1 |
| TANK-COMP-FUEL,L.GREEN (Ref # 51088A) | 51088-5046-777 | 1 |
| TANK-COMP-FUEL,M.S.BLACK (Ref # 51088B) | 51088-5047-660 | 1 |
| BOLT-FLANGED,6X22 (Ref # 130) | 130BA0622 | 1 |
| BOLT-FLANGED,6X70 (Ref # 130A) | 130BB0670 | 1 |
| TUBE-RUBBER,6X850 (Ref # 702A) | 702A06850 | 1 |
| DAMPER (Ref # 92075) | 92075-1690 | 1 |
| DAMPER (Ref # 92075A) | 92075-1983 | 1 |
| SEAL,FUEL TANK CAP (Ref # 92093) | 92093-1030 | 1 |
| BOLT,SOCKET,6X12 (Ref # 92151) | 92151-1219 | 1 |
| BOLT,SOCKET,6X30 (Ref # 92151A) | 92151-1605 | 1 |
| COLLAR (Ref # 92152) | 92152-0091 | 1 |
| COLLAR,6.8X10X60 (Ref # 92152A) | 92152-1182 | 1 |
| BOLT,SOCKET,6X10 (Ref # 92153) | 92153-0410 | 1 |
| BOLT,SOCKET,5X16 (Ref # 92153A) | 92153-1616 | 1 |
| DAMPER (Ref # 92160) | 92160-1613 | 1 |
| DAMPER (Ref # 92161) | 92161-0738 | 1 |
| DAMPER,FUEL TANK,RR (Ref # 92161A) | 92161-1330 | 1 |
| WASHER,6.5X22X1.6 (Ref # 92200) | 92200-1087 | 1 |
| BREATHER,FUEL TANK (Ref # 14069) | 14069-1004 | 1 |
| CLAMP,TUBE (Ref # 92037) | 92037-010 | 2 |
| CLAMP,TUBE (Ref # 92037A) | 92037-147 | 1 |

2013 NINJA® ZX™-6R ABS PARTS LIST

Fuel Tank

| ITEM NAME | PART NUMBER | QUANTITY |
|---------------------------------|-------------|----------|
| TUBE-RUBBER,6X9X660 (Ref # 702) | 702A06660 | 1 |
| TUBE,BREATHER (Ref # 92192) | 92192-0798 | 1 |