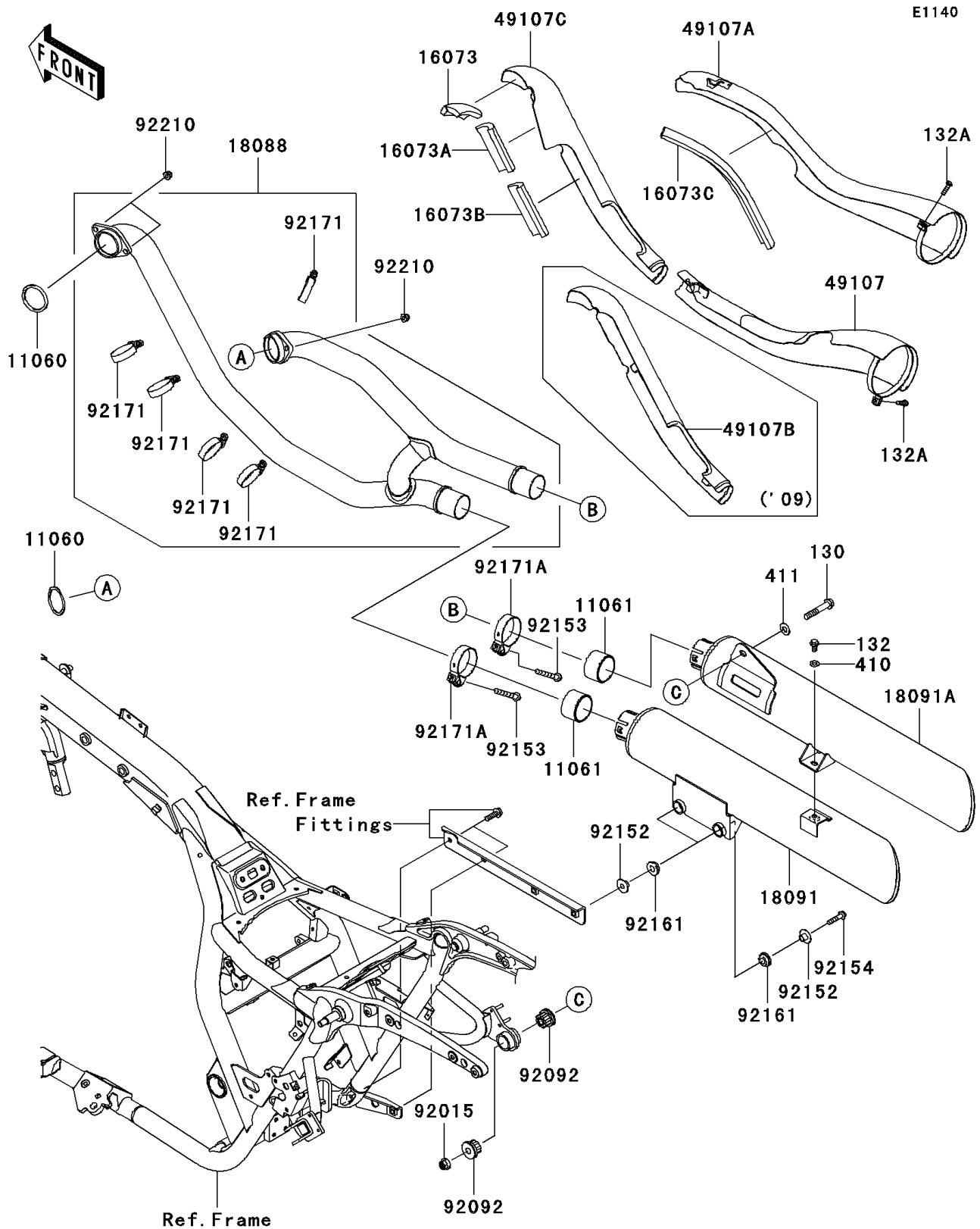


2009 Vulcan® 1700 Classic LT PARTS DIAGRAM

Muffler(s)



2009 Vulcan® 1700 Classic LT PARTS LIST

Muffler(s)

ITEM NAME	PART NUMBER	QUANTITY
BOLT-FLANGED,10X55 (Ref # 130)	130BB1055	1
BOLT-FLANGED-SMALL,8X14 (Ref # 132)	132BB0814	1
BOLT-FLANGED-SMALL,6X20 (Ref # 132A)	132BC0620	1
WASHER-PLAIN-SMALL,8MM,BLACK (Ref # 410)	410AB0800	1
WASHER-PLAIN,10MM,BLACK (Ref # 411)	411AB1000	1
GASKET,EXHAUST PIPE (Ref # 11060)	11060-1119	1
GASKET,MUFFLER CONNECTING (Ref # 11061)	11061-0240	1
INSULATOR (Ref # 16073)	16073-0125	1
INSULATOR (Ref # 16073A)	16073-0126	1
INSULATOR (Ref # 16073B)	16073-0127	1
INSULATOR (Ref # 16073C)	16073-0128	1
PIPE-EXHAUST (Ref # 18088)	18088-0456	1
BODY-COMP-MUFFLER,LWR (Ref # 18091)	18091-0538	1
BODY-COMP-MUFFLER,UPP (Ref # 18091A)	18091-0539	1
COVER-EXHAUST PIPE,FR-R (Ref # 49107)	49107-0139	1
COVER-EXHAUST PIPE,RR (Ref # 49107A)	49107-0140	1
COVER-EXHAUST PIPE,FR-F (Ref # 49107B)	49107-0151	1
NUT,FLANGED,10MM (Ref # 92015)	92015-077	1
BUSHING-RUBBER,MUFFLER (Ref # 92092)	92092-1013	1
COLLAR,8.8X12X10.6 (Ref # 92152)	92152-0082	1
BOLT,8X45 (Ref # 92153)	92153-0702	1
BOLT,FLANGED,8X32 (Ref # 92154)	92154-0136	1
DAMPER (Ref # 92161)	92161-0135	1
CLAMP (Ref # 92171)	92171-0072	1
CLAMP (Ref # 92171A)	92171-0358	1
NUT,CAP,8MM (Ref # 92210)	92210-1132	1