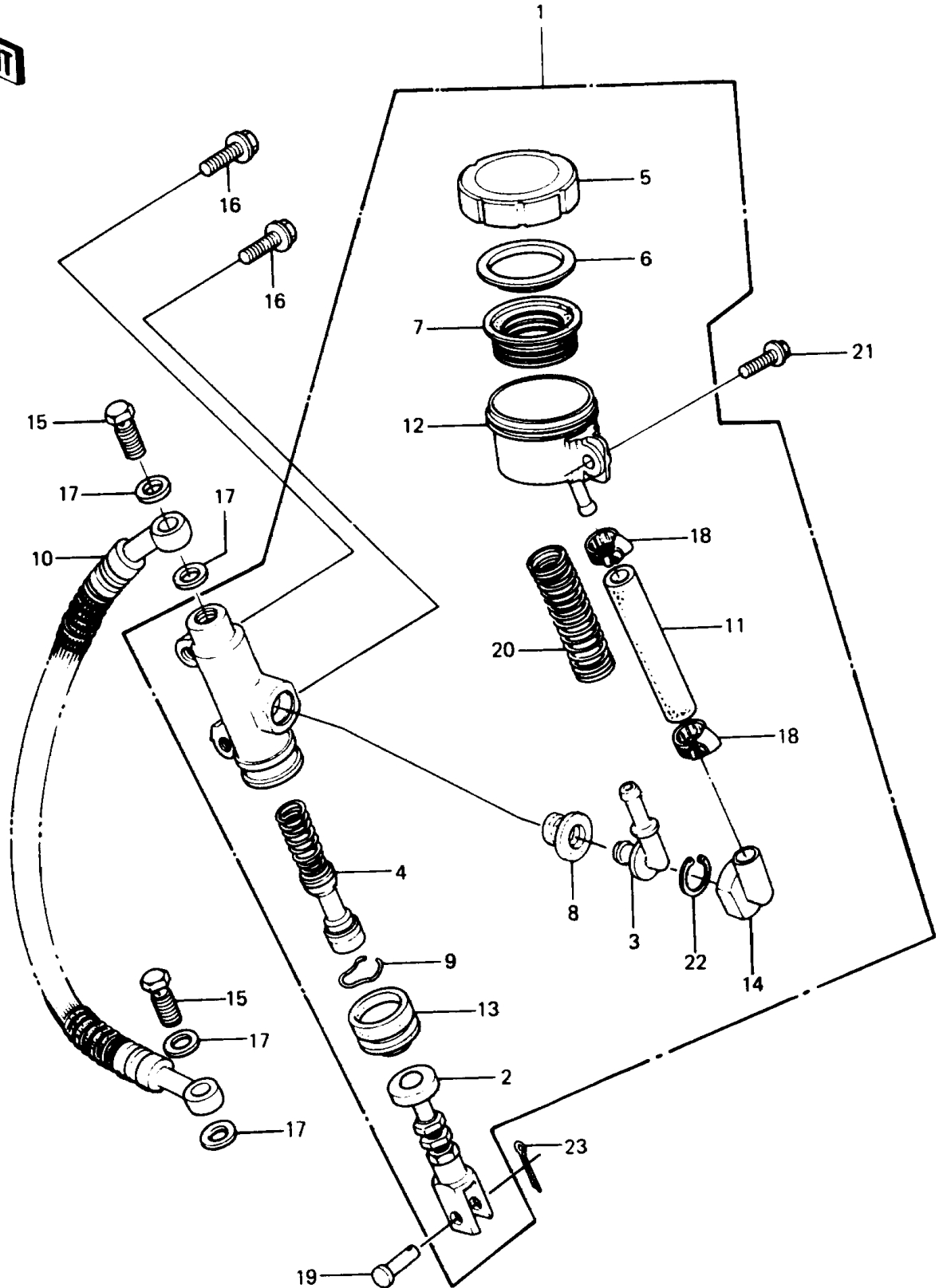


1987 PARTS DIAGRAM

Rear Master Cylinder



1987 PARTS LIST

Rear Master Cylinder

ITEM NAME	PART NUMBER	QUANTITY
HOSE-BRAKE,RR,L=395,W/SPRING (Ref # 10)	43059-1180	1
HOSE-BRAKE,L=125 (Ref # 11)	43059-1096	1
RESERVOIR (Ref # 12)	43078-1009	1
COVER-SEAL,BRAKE PISTON (Ref # 13)	49016-1031	1
COVER-SEAL,MASTER CYLINDER (Ref # 14)	49016-1034	1
BOLT,OIL,L=23 (Ref # 15)	92001-1900	1
BOLT,FLANGED,8X28 (Ref # 16)	92001-1095	1
WASHER,10.5X15X1.5 (Ref # 17)	43067-001	1
CLAMP,BRAKE HOSE (Ref # 18)	92037-1154	1
PIN,8X16 (Ref # 19)	92043-1013	1
SPRING,HOSE PROTECTOR (Ref # 20)	92081-1335	1
BOLT-FLANGED,6X20 (Ref # 21)	130B0620	1
CIRCLIP-TYPE-C,25MM (Ref # 22)	481J2500	1
PIN-COTTER,2.0X15 (Ref # 23)	550D2015	1
CYLINDER-ASSY-MASTER,RR (Ref # 1)	43015-1075	1
ROD-ASSY-BRAKE (Ref # 2)	43010-1004	1
CONNECTOR (Ref # 3)	13159-1009	1
PISTON-COMP-BRAKE (Ref # 4)	43020-1019	1
CAP-BRAKE (Ref # 5)	43026-1016	1
PLATE-DIAPHRAGM (Ref # 6)	43027-1005	1
DIAPHRAGM (Ref # 7)	43028-1016	1
PACKING (Ref # 8)	43049-1008	1
RING,ROD STOPPER (Ref # 9)	43058-004	1