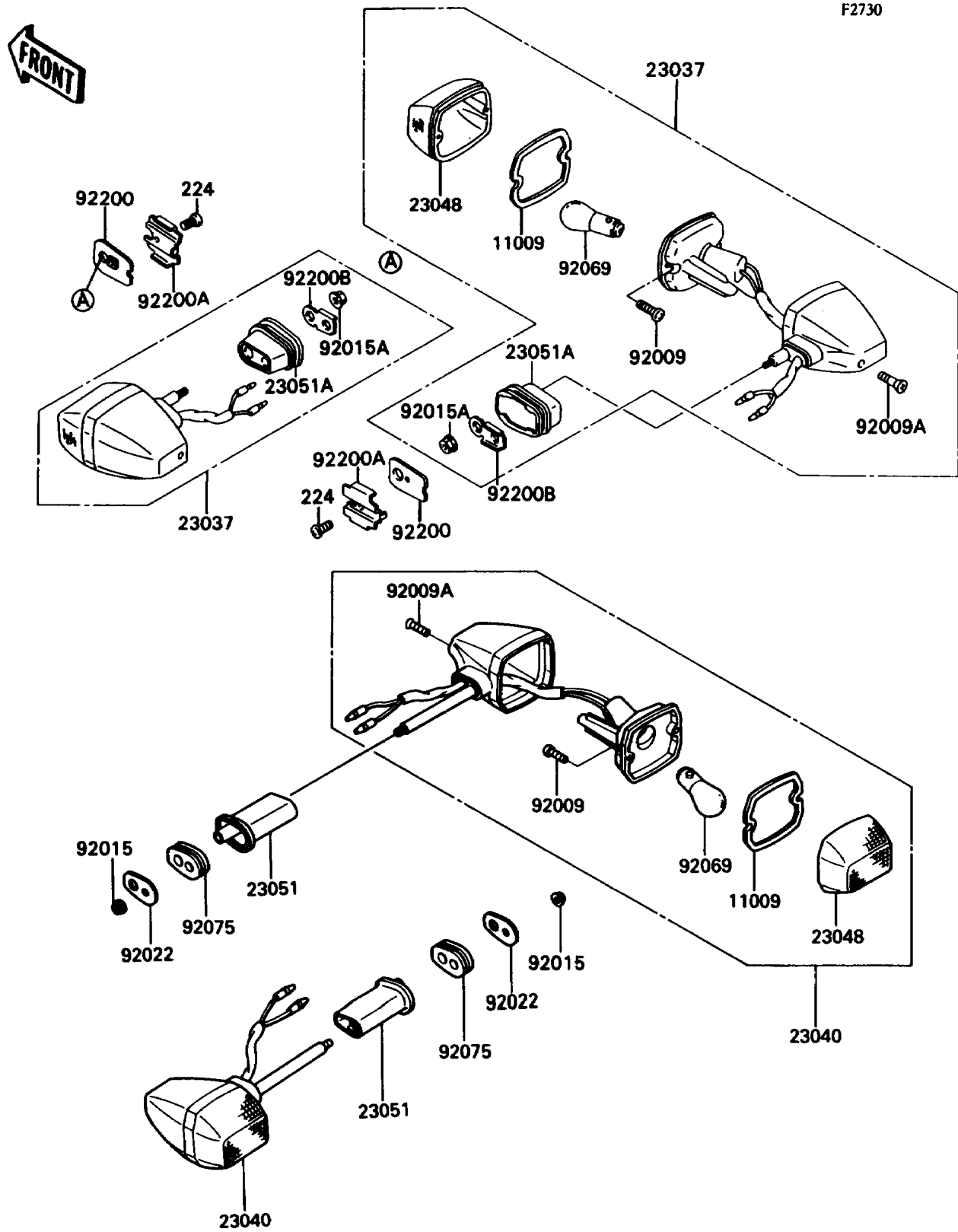


## 1990 NINJA® ZX™-7 PARTS DIAGRAM

Turn Signals



## 1990 NINJA® ZX™-7 PARTS LIST

### Turn Signals

| ITEM NAME                             | PART NUMBER | QUANTITY |
|---------------------------------------|-------------|----------|
| GASKET,SIGNAL LAMP (Ref # 11009)      | 11009-1402  | 1        |
| LAMP-ASSY-SIGNAL,FR (Ref # 23037)     | 23037-1257  | 1        |
| LAMP-SIGNAL,RR (Ref # 23040)          | 23040-1195  | 1        |
| LENS-SIGNAL LAMP (Ref # 23048)        | 23048-1054  | 1        |
| BRACKET-SIGNAL LAMP (Ref # 23051)     | 23051-1164  | 1        |
| BRACKET-SIGNAL LAMP,FR (Ref # 23051A) | 23051-1207  | 1        |
| SCREW,TAPPING,3X16 (Ref # 92009)      | 92009-1115  | 1        |
| SCREW,TAPPING,4X20 (Ref # 92009A)     | 92009-1304  | 1        |
| NUT,FLANGED,6MM (Ref # 92015)         | 92015-1193  | 1        |
| NUT,FLANGED,6MM (Ref # 92015A)        | 92015-1367  | 1        |
| WASHER,SIGNAL LAMP (Ref # 92022)      | 92022-1672  | 1        |
| BULB,12V 32CP(23W) (Ref # 92069)      | 92069-055   | 1        |
| DAMPER,SIGNAL LAMP (Ref # 92075)      | 92075-1698  | 1        |
| WASHER,SIGNAL LAMP (Ref # 92200)      | 92200-1015  | 1        |
| WASHER,SIGNAL LAMP (Ref # 92200A)     | 92200-1016  | 1        |
| WASHER (Ref # 92200B)                 | 92200-1021  | 1        |
| SCREW-PAN-WP-CROS,4X8 (Ref # 224)     | 224C0408    | 1        |