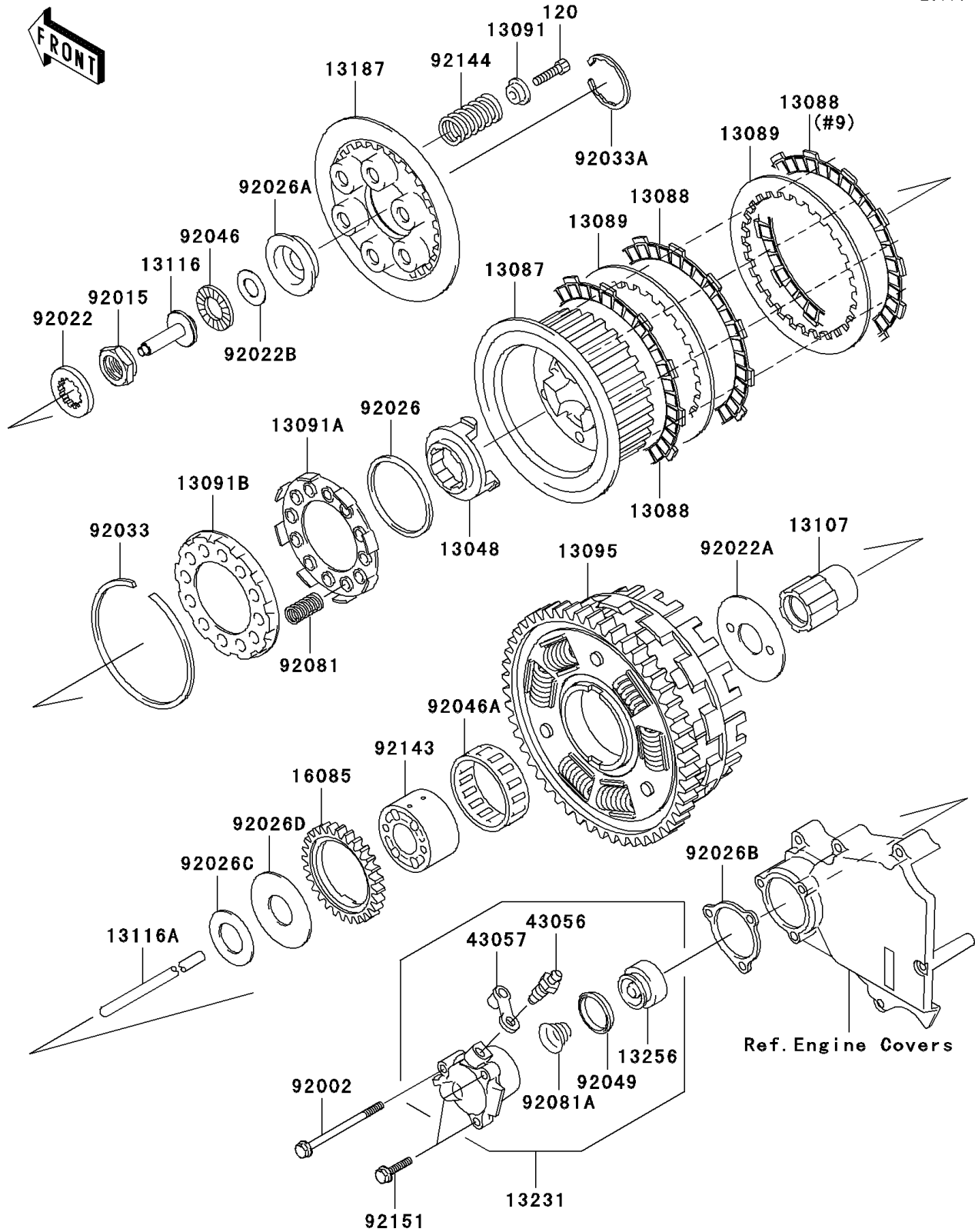


## 2002 ZZR® 1200 PARTS DIAGRAM

Clutch

E1350



## 2002 ZZR® 1200 PARTS LIST

### Clutch

ITEM NAME	PART NUMBER	QUANTITY
BOLT-SOCKET,6X25 (Ref # 120)	120Q0625	1
CAM-DAMPER (Ref # 13048)	13048-1007	1
HUB-CLUTCH (Ref # 13087)	13087-1121	1
PLATE-FRICTION (Ref # 13088)	13088-1145	1
PLATE-CLUTCH (Ref # 13089)	13089-1092	1
HOLDER,CLUTCH SPRING (Ref # 13091)	13091-1041	1
HOLDER,DAMPER SPRING,RH (Ref # 13091A)	13091-1042	1
HOLDER,DAMPER SPRING,LH (Ref # 13091B)	13091-1043	1
HOUSING-COMP-CLUTCH (Ref # 13095)	13095-1415	1
SHAFT,CLUTCH (Ref # 13107)	13107-1299	1
ROD-PUSH,CLUTCH (Ref # 13116)	13116-1102	1
ROD-PUSH,CLUTCH (Ref # 13116A)	13116-1140	1
PLATE-CLUTCH OPERATING (Ref # 13187)	13187-1069	1
RELEASE-ASSY-CLUTCH (Ref # 13231)	13231-1076	1
PISTON (Ref # 13256)	13256-1052	1
GEAR,OIL PUMP,37T (Ref # 16085)	16085-1235	1
BREATHER (Ref # 43056)	43056-1052	1
CAP-BREATHER (Ref # 43057)	43057-1001	1
BOLT,6X80 (Ref # 92002)	92002-1568	1
NUT,20MM (Ref # 92015)	92015-1555	1
WASHER,TOOTHED,25X40X5 (Ref # 92022)	92022-1114	1
WASHER,CLUTCH THRUST (Ref # 92022A)	92022-1221	1
WASHER,15.1X29X1.0 (Ref # 92022B)	92022-1463	1
SPACER,59X70X3.5 (Ref # 92026)	92026-1043	1
SPACER,CLUTCH (Ref # 92026A)	92026-1202	1
SPACER,CLUTCH RELEASE (Ref # 92026B)	92026-1263	1
SPACER,25X45X2.0 (Ref # 92026C)	92026-1306	1
SPACER,25X62X2.0 (Ref # 92026D)	92026-1307	1
RING-SNAP (Ref # 92033)	92033-1029	1

## 2002 ZZR® 1200 PARTS LIST

Clutch

ITEM NAME	PART NUMBER	QUANTITY
RING-SNAP,50MM (Ref # 92033A)	92033-1177	1
BEARING-NEEDLE,AXK1102 (Ref # 92046)	92046-1052	1
BEARING-NEEDLE,K550X62X18 (Ref # 92046A)	92046-1200	1
SEAL-OIL,PISTON (Ref # 92049)	92049-1165	1
SPRING,CLUTCH DAMPER (Ref # 92081)	92081-1115	1
SPRING,CLUTCH RELEASE (Ref # 92081A)	92081-1644	1
COLLAR,CLUTCH (Ref # 92143)	92143-1429	1
SPRING,CLUTCH (Ref # 92144)	92144-1473	1
BOLT,6X25 (Ref # 92151)	92151-1190	1