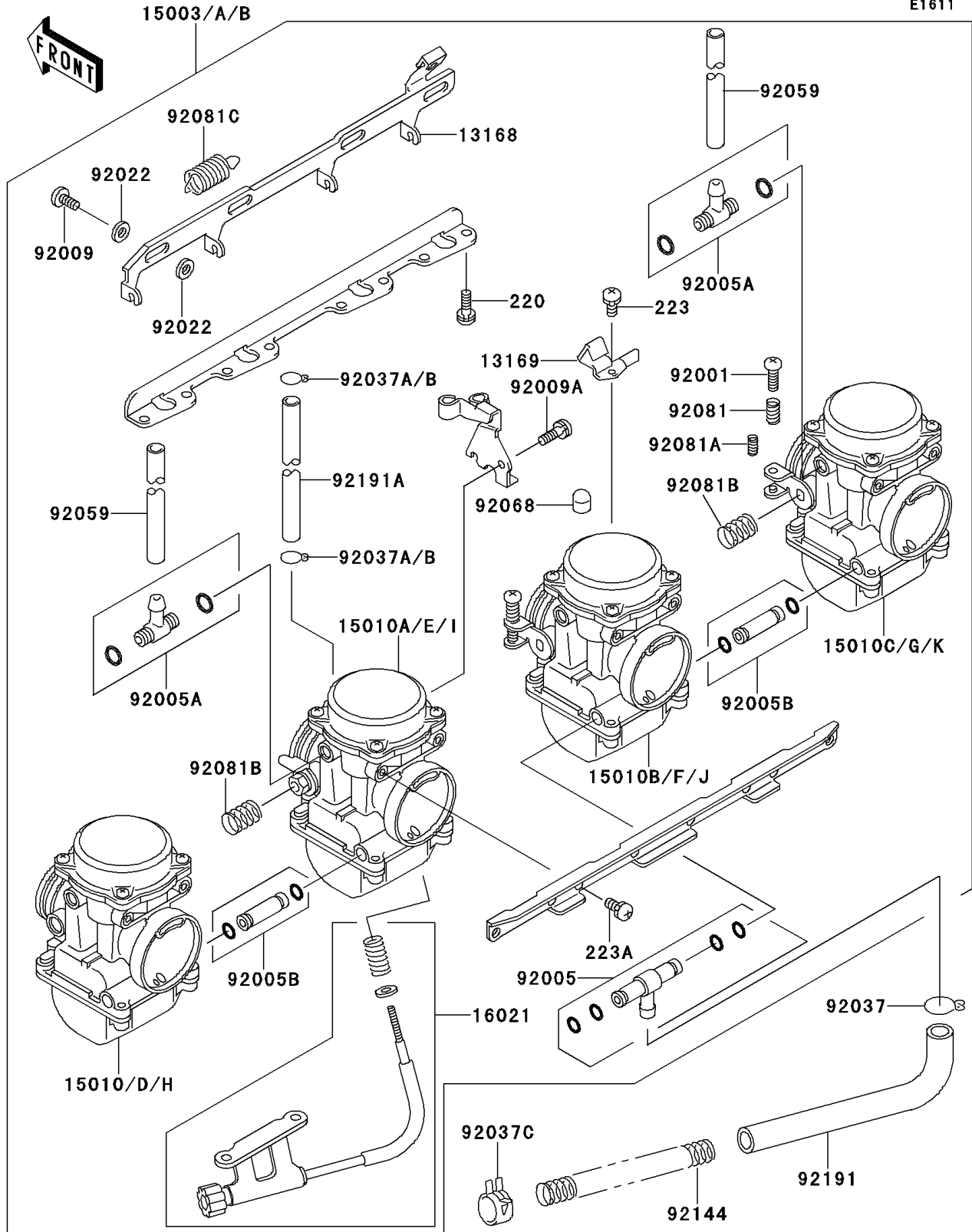


1995 GPZ1100 PARTS DIAGRAM

Carburetor

E1611



1995 GPZ1100 PARTS LIST

Carburetor

| ITEM NAME | PART NUMBER | QUANTITY |
|--|-------------|----------|
| LEVER,STARTER (Ref # 13168) | 13168-1245 | 1 |
| PLATE,STARTER CABLE (Ref # 13169) | 13169-1871 | 1 |
| SCREW-THROTTLE STOP (Ref # 16021) | 16021-1204 | 1 |
| BOLT,THROTTLE ADJUST (Ref # 92001) | 92001-1998 | 1 |
| FITTING (Ref # 92005) | 92005-1288 | 1 |
| FITTING (Ref # 92005A) | 92005-1306 | 1 |
| FITTING (Ref # 92005B) | 92005-1310 | 1 |
| SCREW (Ref # 92009) | 92009-1262 | 1 |
| SCREW,5X10 (Ref # 92009A) | 92009-1365 | 1 |
| WASHER,6.1X11X0.8,POLYACETAL (Ref # 92022) | 92022-1199 | 1 |
| CLAMP,HOSE (Ref # 92037) | 92037-1104 | 1 |
| SCREW-PAN-CROS,6X16 (Ref # 220) | 220B0616 | 1 |
| SCREW-PAN-WS-CROS (Ref # 223) | 223C0420 | 1 |
| SCREW-PAN-WS-CROS (Ref # 223A) | 223C0510 | 1 |
| CLAMP (Ref # 92037C) | 92037-1861 | 1 |
| TUBE,6.5X9.5X350 (Ref # 92059) | 92059-1237 | 1 |
| PLUG,12X25 (Ref # 92068) | 92068-006 | 1 |
| SPRING,THROTTLE ADJUST UPP (Ref # 92081) | 92081-1620 | 1 |
| SPRING,THROTTLE ADJUST LWR (Ref # 92081A) | 92081-1621 | 1 |
| SPRING,THROTTLE ADJUST CNT (Ref # 92081B) | 92081-1622 | 1 |
| SPRING,STARTER LEVER (Ref # 92081C) | 92081-1762 | 1 |
| SPRING,FUEL TUBE (Ref # 92144) | 92144-1874 | 1 |
| TUBE,FUEL (Ref # 92191) | 92191-1007 | 1 |
| TUBE (Ref # 92191A) | 92191-1017 | 1 |
| CARBURETOR-ASSY (Ref # 15003) | 15003-1122 | 1 |
| CARBURETOR-ASSY (Ref # 15003A) | 15003-1129 | 1 |
| CARBURETOR-ASSY (Ref # 15003B) | 15003-1130 | 1 |
| CARBURETOR,LH,OUTSIDE (Ref # 15010) | 15010-1909 | 1 |
| CARBURETOR,LH,INSIDE (Ref # 15010A) | 15010-1910 | 1 |

1995 GPZ1100 PARTS LIST

Carburetor

| ITEM NAME | PART NUMBER | QUANTITY |
|--------------------------------------|-------------|----------|
| CARBURETOR,RH,INSIDE (Ref # 15010B) | 15010-1911 | 1 |
| CARBURETOR,RH,OUTSIDE (Ref # 15010C) | 15010-1912 | 1 |
| CARBURETOR,LH,OUTSIDE (Ref # 15010D) | 15010-1917 | 1 |
| CARBURETOR,LH,INSIDE (Ref # 15010E) | 15010-1918 | 1 |
| CARBURETOR,RH,INSIDE (Ref # 15010F) | 15010-1919 | 1 |
| CARBURETOR,RH,OUTSIDE (Ref # 15010G) | 15010-1920 | 1 |
| CARBURETOR,LH,OUTSIDE (Ref # 15010H) | 15010-1921 | 1 |
| CARBURETOR,LH,INSIDE (Ref # 15010I) | 15010-1922 | 1 |
| CARBURETOR,RH,INSIDE (Ref # 15010J) | 15010-1923 | 1 |
| CARBURETOR,RH,OUTSIDE (Ref # 15010K) | 15010-1924 | 1 |
| CLAMP,TUBE (Ref # 92037A) | 92037-1201 | 1 |
| CLAMP,TUBE (Ref # 92037B) | 92037-1477 | 1 |