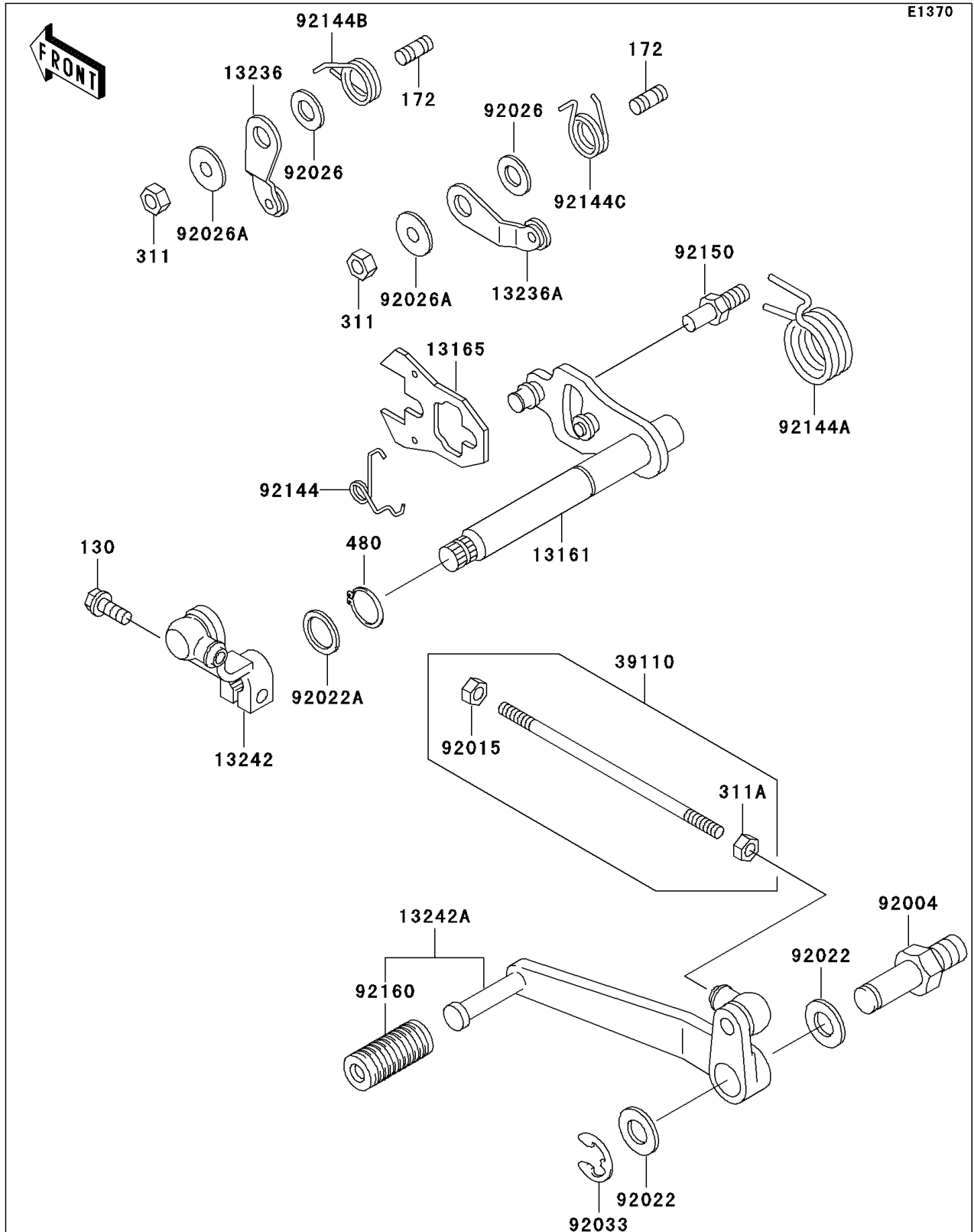


## 1996 NINJA® ZX™-11 PARTS DIAGRAM

Gear Change Mechanism



## 1996 NINJA® ZX™-11 PARTS LIST

Gear Change Mechanism

| ITEM NAME                                 | PART NUMBER | QUANTITY |
|-------------------------------------------|-------------|----------|
| BOLT-FLANGED,6X20,BLACK (Ref # 130)       | 130S0620    | 1        |
| BOLT-STUD,6X14 (Ref # 172)                | 172G0614    | 1        |
| NUT-HEX,6MM (Ref # 311)                   | 311G0600    | 1        |
| NUT-HEX (Ref # 311A)                      | 311J0600    | 1        |
| CIRCLIP-TYPE-C,13MM (Ref # 480)           | 480J1300    | 1        |
| LEVER-COMP-CHANGE SHAFT (Ref # 13161)     | 13161-1155  | 1        |
| PAWL (Ref # 13165)                        | 13165-1120  | 1        |
| LEVER-COMP,GEAR POSITION (Ref # 13236)    | 13236-1103  | 1        |
| LEVER-COMP,GEAR POSITION (Ref # 13236A)   | 13236-1216  | 1        |
| LEVER-ASSY-CHANGE,BOSS (Ref # 13242)      | 13242-1242  | 1        |
| LEVER-ASSY-CHANGE,PEDAL (Ref # 13242A)    | 13242-1283  | 1        |
| ROD-ASSY-TIE (Ref # 39110)                | 39110-1106  | 1        |
| STUD,CHANGE PEDAL,PIVOT (Ref # 92004)     | 92004-1164  | 1        |
| NUT (Ref # 92015)                         | 92015-1178  | 1        |
| WASHER,12.5X22X1.2 (Ref # 92022)          | 92022-1593  | 1        |
| WASHER,13.3X18X1 (Ref # 92022A)           | 92022-1772  | 1        |
| SPACER,6.3X12X1.0 (Ref # 92026)           | 92026-094   | 1        |
| SPACER (Ref # 92026A)                     | 92026-1217  | 1        |
| RING-SNAP,TYPE-E,10MM (Ref # 92033)       | 92033-1178  | 1        |
| SPRING (Ref # 92144)                      | 92144-1029  | 1        |
| SPRING,CHANGE PEDAL RETURN (Ref # 92144A) | 92144-1074  | 1        |
| SPRING (Ref # 92144B)                     | 92144-1856  | 1        |
| SPRING,GEAR POSITION (Ref # 92144C)       | 92144-1857  | 1        |
| BOLT,RETURN SPRING (Ref # 92150)          | 92150-1869  | 1        |
| DAMPER,CHANGE PEDAL (Ref # 92160)         | 92160-1036  | 1        |