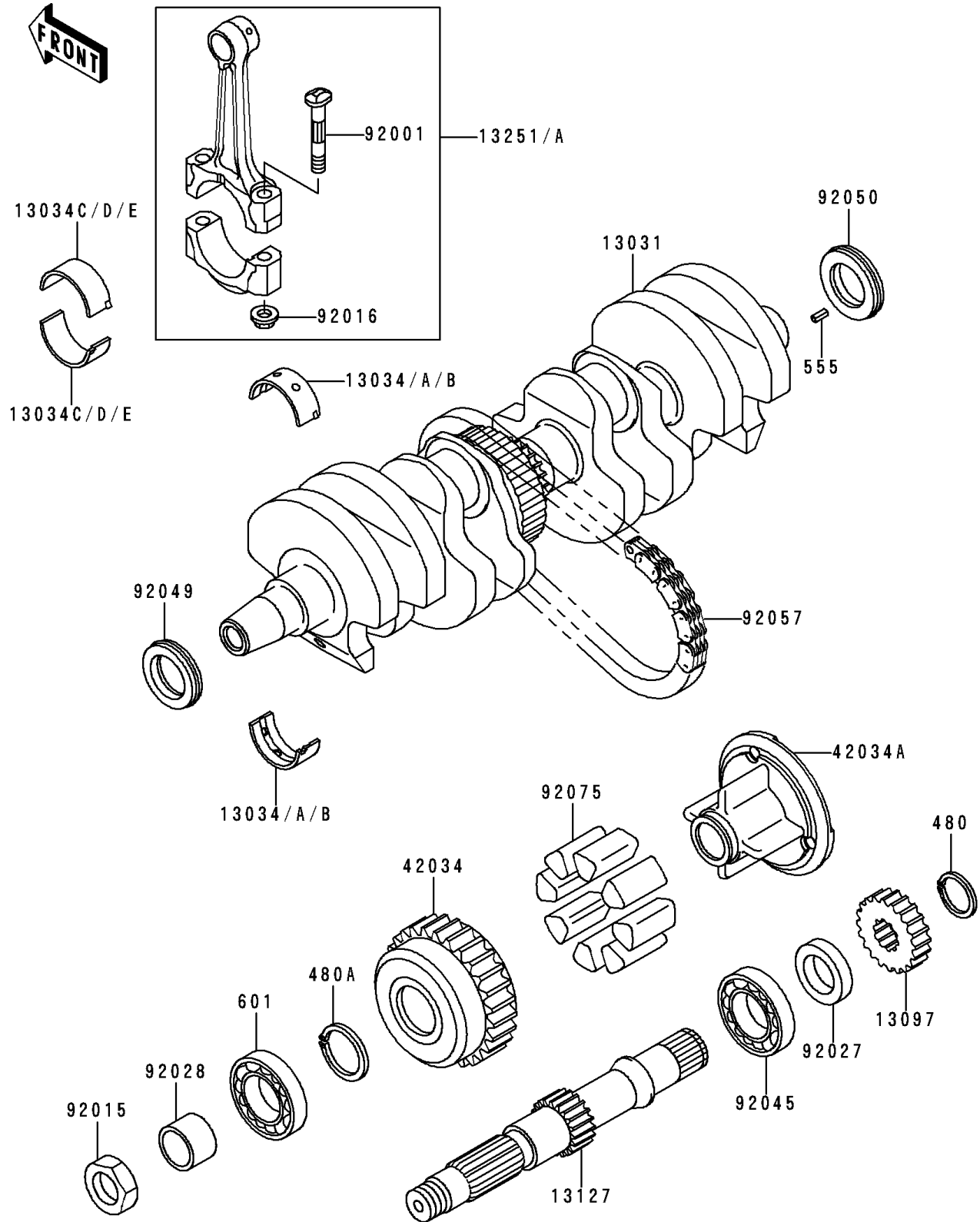


## 1990 Zephyr™ 550 PARTS DIAGRAM

Crankshaft

E1321



## 1990 Zephyr™ 550 PARTS LIST

Crankshaft

| ITEM NAME                                     | PART NUMBER   | QUANTITY |
|---|---------------|----------|
| CIRCLIP-TYPE-C,22MM (Ref # 480)               | 480J2200      | 1        |
| CIRCLIP-TYPE-C,28MM (Ref # 480A)              | 480J2800      | 1        |
| PIN-SPRING,4X8 (Ref # 555)                    | 555A0408      | 1        |
| BEARING-BALL,#6205C3 (Ref # 601)              | 601B6205      | 1        |
| CRANKSHAFT-COMP (Ref # 13031)                 | 13031-1014    | 1        |
| METAL,CRANKSHAFT,BROWN (Ref # 13034)          | 13034-1016    | 1        |
| METAL,CRANKSHAFT,BLACK (Ref # 13034A)         | 13034-1017    | 1        |
| METAL,CRANKSHAFT,BLUE (Ref # 13034B)          | 13034-1018    | 1        |
| BUSHING,CONNECTING ROD,BLUE (Ref # 13034C)    | 13034-1067    | 1        |
| BUSHING,CONNECTING ROD,BLACK (Ref # 13034D)   | 13034-1068    | 1        |
| BUSHING,CONNECTING ROD,BROWN (Ref # 13034E)   | 13034-1069    | 1        |
| GEAR-PRIMARY SPUR,26T (Ref # 13097)           | 13097-1008    | 1        |
| SHAFT,SECONDARY (Ref # 13127)                 | 13127-1007    | 1        |
| ROD-ASSY-CONNECTING (Ref # 13251)             | 13251-1004-EE | 1        |
| ROD-ASSY-CONNECTING (Ref # 13251A)            | 13251-1004-GG | 1        |
| COUPLING,OUTER,SECONDARY SHAFT (Ref # 42034)  | 42034-1004    | 1        |
| COUPLING,INNER,SECONDARY SHAFT (Ref # 42034A) | 42034-1005    | 1        |
| BOLT,CONNECTING ROD,7MM (Ref # 92001)         | 92001-1053    | 1        |
| NUT,18MM (Ref # 92015)                        | 92015-019     | 1        |
| NUT,7MM (Ref # 92016)                         | 92016-060     | 1        |
| COLLAR,22X34X7.3 (Ref # 92027)                | 92027-1438    | 1        |
| BUSHING,20X25X16.6 (Ref # 92028)              | 92028-1037    | 1        |
| BEARING-BALL,#63/22X (Ref # 92045)            | 92045-1017    | 1        |
| SEAL-OIL,HSCY25367 (Ref # 92049)              | 92049-1013    | 1        |
| SEAL-OIL,HSCY25397 (Ref # 92050)              | 92050-081     | 1        |
| CHAIN,PRIMARY,MA0364X50L (Ref # 92057)        | 92057-1011    | 1        |
| DAMPER,COUPLING (Ref # 92075)                 | 92075-1070    | 1        |