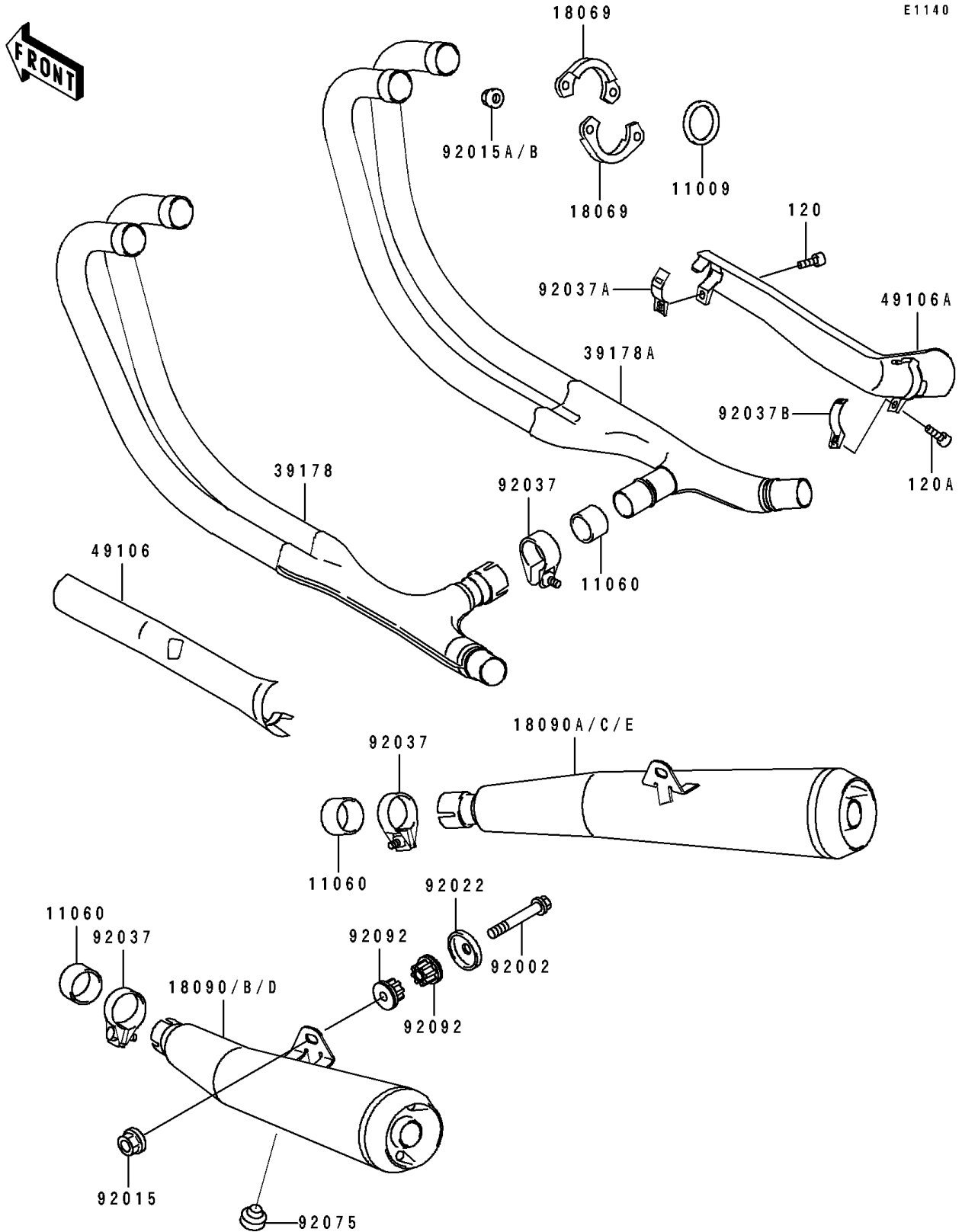


1992 PARTS DIAGRAM

Muffler(s)



1992 PARTS LIST

Muffler(s)

ITEM NAME	PART NUMBER	QUANTITY
GASKET,EXHAUST PIPE (Ref # 11009)	11009-1995	1
GASKET,MANIFOLD EXHAUST (Ref # 11060)	11060-1068	1
HOLDER-EXHAUST PIPE (Ref # 18069)	18069-1113	1
BODY-COMP-MUFFLER,LH (Ref # 18090D)	18090-1404	1
BODY-COMP-MUFFLER,RH (Ref # 18090E)	18090-1405	1
MANIFOLD-COMP-EXHAUST,LH (Ref # 39178)	39178-1211	1
MANIFOLD-COMP-EXHAUST,RH (Ref # 39178A)	39178-1212	1
COVER-MUFFLER,LH (Ref # 49106)	49106-1142	1
COVER-MUFFLER,RH (Ref # 49106A)	49106-1143	1
BOLT,10X55 (Ref # 92002)	92002-1127	1
NUT,FLANGED,10MM (Ref # 92015)	92015-1387	1
NUT (Ref # 92015A)	92015-1889	1
WASHER (Ref # 92022)	92022-289	1
CLAMP,MUFFLER (Ref # 92037)	92037-1258	1
CLAMP,EXHAUST PIPE COVER (Ref # 92037A)	92037-1699	1
CLAMP,MUFFLER COVER,FR (Ref # 92037B)	92037-1752	1
DAMPER,STAND,CNT (Ref # 92075)	92075-1002	1
BUSHING-RUBBER,MUFFLER (Ref # 92092)	92092-1013	1
BOLT-SOCKET (Ref # 120)	120Z0614	1
BOLT-SOCKET (Ref # 120A)	120Z0620	1