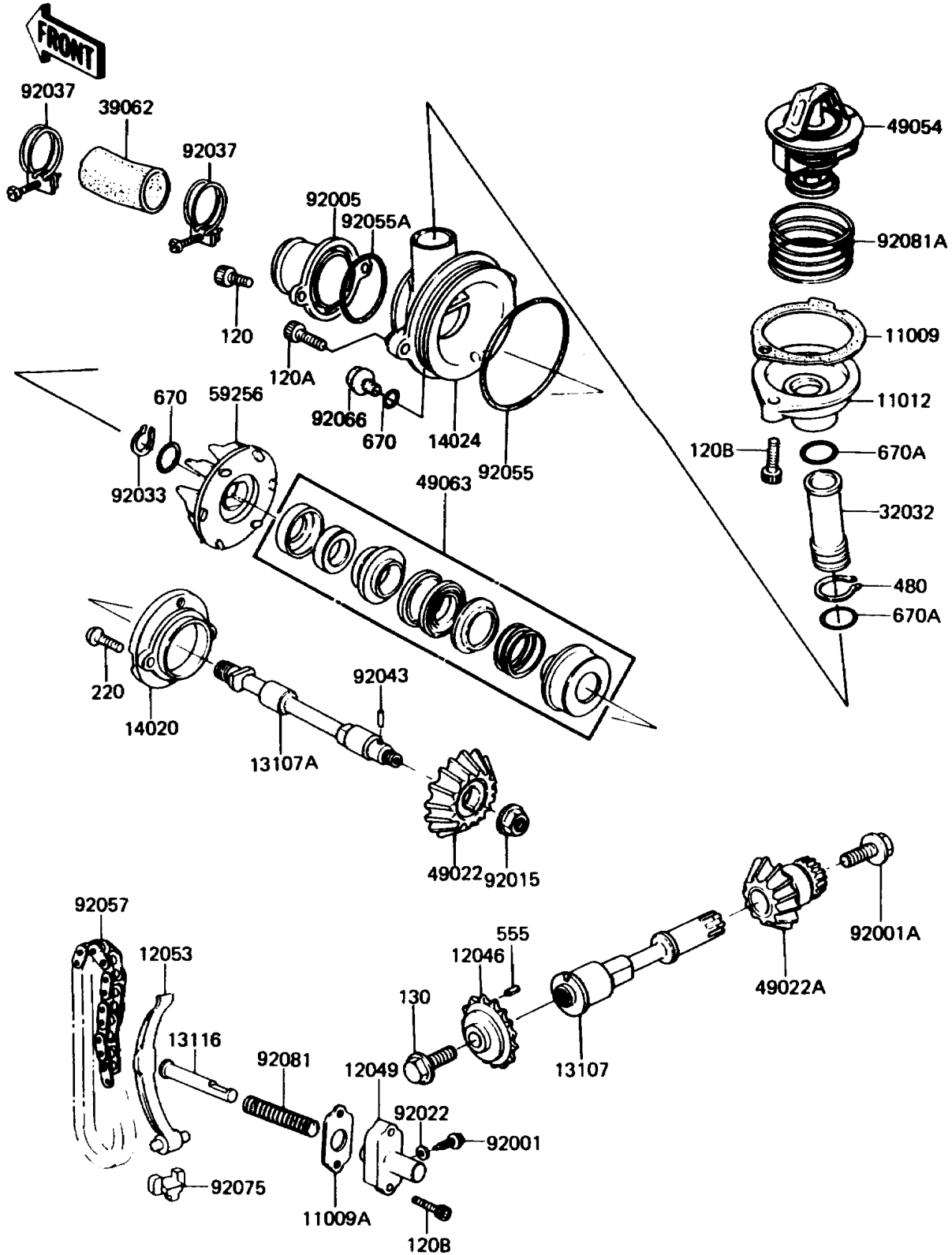


1987 Voyager® 1300 PARTS DIAGRAM

Water Pump

E3031-0001



1987 Voyager® 1300 PARTS LIST

Water Pump

ITEM NAME	PART NUMBER	QUANTITY
GASKET,THERMOSTAT CAP (Ref # 11009)	11009-1087	1
GASKET,TIMING CHAIN TENSIONER (Ref # 11009A)	11009-1099	1
CAP,THERMOSTAT (Ref # 11012)	11012-1054	1
SPROCKET,TIMING CHAIN (Ref # 12046)	12046-1015	1
TENSIONER,TIMING CHAIN (Ref # 12049)	12049-1007	1
GUIDE-CHAIN,TIMING (Ref # 12053)	12053-1027	1
SHAFT,WATER PUMP DRIVE (Ref # 13107)	13107-1009	1
SHAFT,WATER PUMP (Ref # 13107A)	13107-1011	1
ROD-PUSH,TENSIONER (Ref # 13116)	13116-1014	1
RETAINER,MECHANICAL SEAL (Ref # 14020)	14020-1004	1
COVER,WATER PUMP (Ref # 14024)	14025-1864	1
PIPE,WATER BYPASS (Ref # 32032)	32032-1184	1
HOSE-COOLING,31X39X85 (Ref # 39062)	39062-1020	1
GEAR-BEVEL,WATER PUMP (Ref # 49022)	49022-1006	1
GEAR-BEVEL,WATER PUMP (Ref # 49022A)	49022-1015	1
THERMOSTAT (Ref # 49054)	49054-1001	1
SEAL-MECHANICAL (Ref # 49063)	49063-1001	1
IMPELLER,WATER PUMP (Ref # 59256)	59256-1001	1
BOLT,TENSIONER ADJUST (Ref # 92001)	92001-1155	1
BOLT,FLANGED,8X17 (Ref # 92001A)	92001-1371	1
FITTING,SUCTION (Ref # 92005)	92005-1011	1
NUT,FLANGED,8MM (Ref # 92015)	92015-1014	1
WASHER,6.1X12X1 (Ref # 92022)	92022-077	1
RING-SNAP,11MM (Ref # 92033)	92033-1024	1
CLAMP,HOSE (Ref # 92037)	92037-1177	1
PIN,DOWEL,4X15.8 (Ref # 92043)	92042-014	1
RING-O,67MM (Ref # 92055)	92055-1032	1
RING-O,OR2037 (Ref # 92055A)	92055-1033	1
CHAIN,TIMING,BF25HX72L (Ref # 92057)	92057-1019	1

1987 Voyager® 1300 PARTS LIST

Water Pump

ITEM NAME	PART NUMBER	QUANTITY
PLUG,DRAIN,8X10 (Ref # 92066)	92066-1026	1
DAMPER,TIMING CHAIN GUIDE (Ref # 92075)	92075-1187	1
SPRING,TENSIONER (Ref # 92081)	92081-1102	1
SPRING,THERMOSTAT (Ref # 92081A)	92081-1104	1
BOLT-SOCKET (Ref # 120)	120Z0616	1
BOLT-SOCKET (Ref # 120A)	120Z0620	1
BOLT-SOCKET (Ref # 120B)	120Z0625	1
BOLT-FLANGED,8X20 (Ref # 130)	130G0820	1
SCREW-PAN-CROS (Ref # 220)	220R0516	1
CIRCLIP-TYPE-C,20MM (Ref # 480)	480J2000	1
PIN-SPRING,4X8 (Ref # 555)	555A0408	1
O RING,8MM (Ref # 670)	670B1508	1
O RING,16MM (Ref # 670A)	670B2016	1