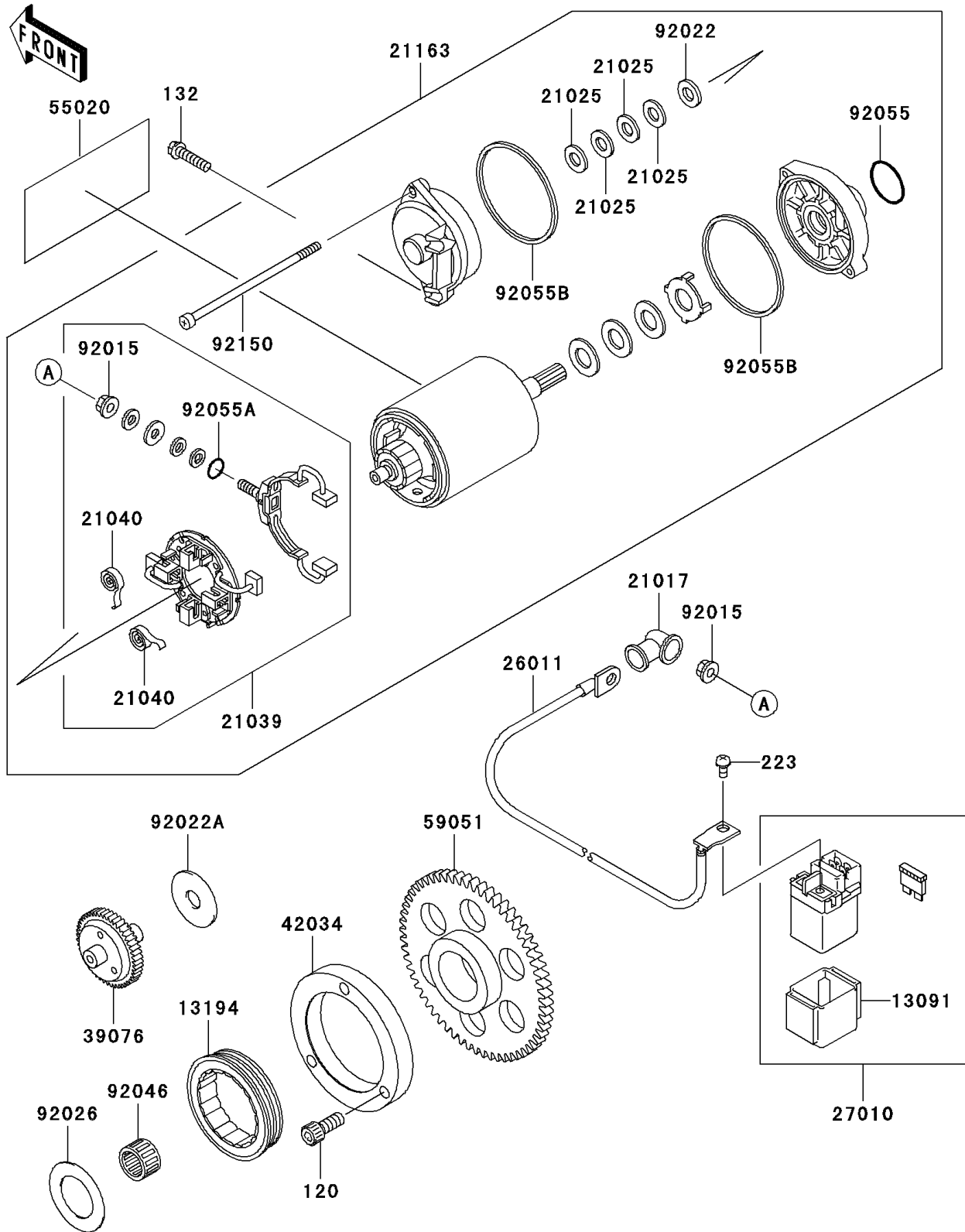


## 2006 Vulcan® 800 Drifter® PARTS DIAGRAM

Starter Motor

E1840



## 2006 Vulcan® 800 Drifter® PARTS LIST

Starter Motor

ITEM NAME	PART NUMBER	QUANTITY
BOLT-SOCKET,8X20 (Ref # 120)	120Q0820	1
BOLT-FLANGED-SMALL,6X25 (Ref # 132)	132J0625	1
SCREW-PAN-WS-CROS,5X10 (Ref # 223)	223D0510	1
HOLDER,MAGNETIC SWITCH (Ref # 13091)	13091-1884	1
CLUTCH-ONEWAY (Ref # 13194)	13194-1085	1
GROMMET,STARTER TERMINAL (Ref # 21017)	21017-017	1
WASHER,9.1X18X0.2 (Ref # 21025)	21025-011	1
BRUSH,CARBON (Ref # 21039)	21039-1060	1
SPRING-BRUSH (Ref # 21040)	21040-1055	1
STARTER-ELECTRIC (Ref # 21163)	21163-1263	1
WIRE-LEAD (Ref # 26011)	26011-1700	1
SWITCH,MAGNETIC (Ref # 27010)	27010-1327	1
LIMITER,STARTER IDLE GEAR (Ref # 39076)	39076-1070	1
COUPLING (Ref # 42034)	42034-1143	1
GUARD,STARTER MOTER (Ref # 55020)	55020-1589	1
GEAR-SPUR,STARTER,63T (Ref # 59051)	59051-1130	1
NUT,STARTER MOTOR (Ref # 92015)	92015-1476	1
WASHER,9.1X18X0.8 (Ref # 92022)	92022-1132	1
WASHER,12.3X38X2.0 (Ref # 92022A)	92022-1664	1
SPACER,29.1X47.5X1.2 (Ref # 92026)	92026-087	1
BEARING-NEEDLE (Ref # 92046)	92046-1137	1
RING-0 (Ref # 92055)	92055-1276	1
RING-0,4.5X2.0 (Ref # 92055A)	92055-1370	1
RING-0,STARTER MOTOR (Ref # 92055B)	92055-1381	1
BOLT,STARTER MOTOR (Ref # 92150)	92150-1913	1