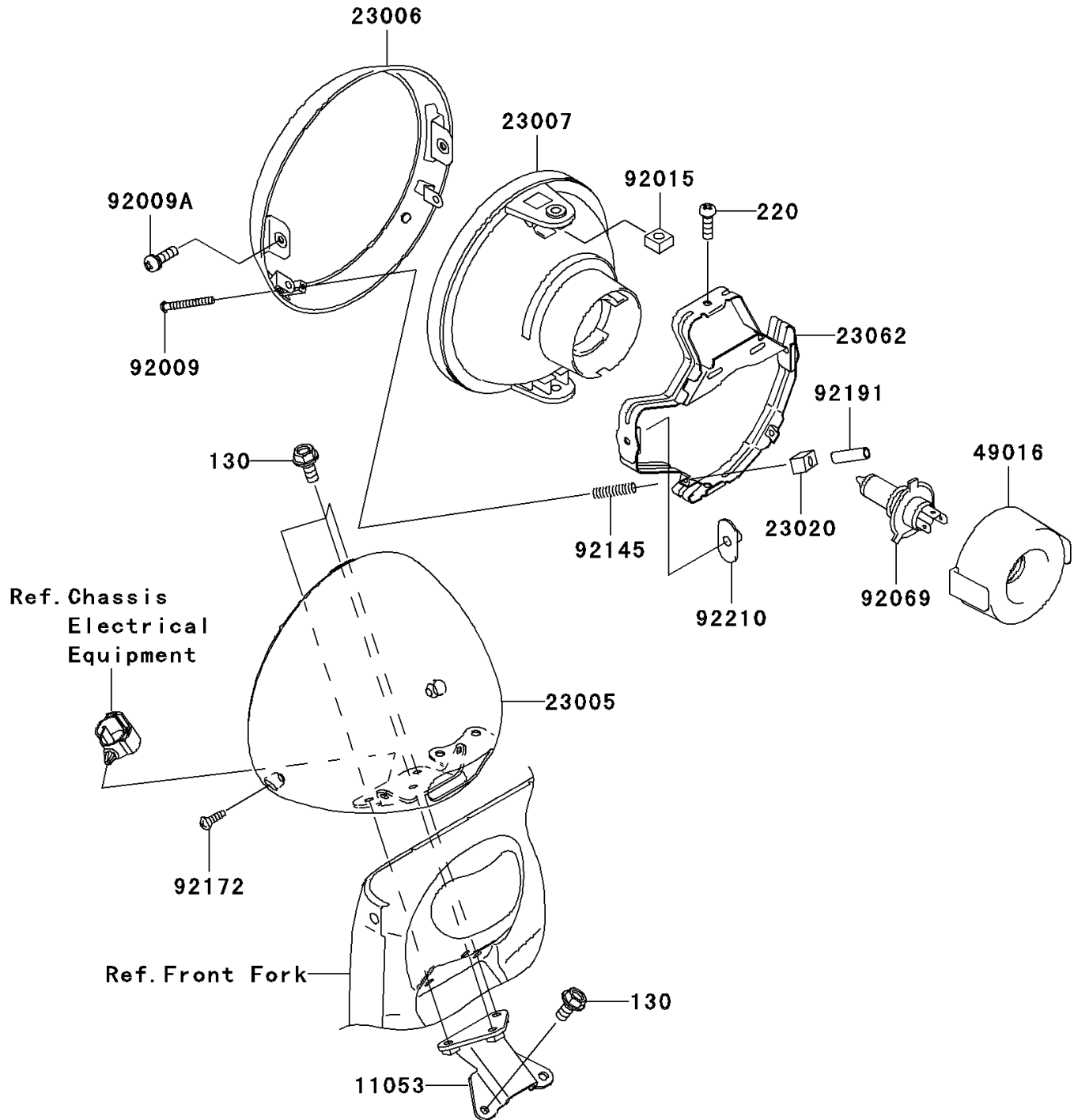


## 2006 Vulcan® 1600 Classic PARTS DIAGRAM

Headlight(s)

F2710



## 2006 Vulcan® 1600 Classic PARTS LIST

Headlight(s)

| ITEM NAME                             | PART NUMBER | QUANTITY |
|---------------------------------------|-------------|----------|
| BOLT-FLANGED,6X14 (Ref # 130)         | 130H0614    | 1        |
| SCREW-PAN-CROSS,5X16 (Ref # 220)      | 220D0516    | 1        |
| BRACKET,HEAD LAMP (Ref # 11053)       | 11053-0324  | 1        |
| BODY-COMP-HEAD LAMP (Ref # 23005)     | 23005-1205  | 1        |
| RIM-LAMP (Ref # 23006)                | 23006-1081  | 1        |
| LENS-COMP,HEAD LAMP (Ref # 23007)     | 23007-1396  | 1        |
| NUT,4MM,FOCUS ADJUST (Ref # 23020)    | 23020-018   | 1        |
| BRACKET-COMP,HEAD LAMP (Ref # 23062)  | 23062-1132  | 1        |
| COVER-SEAL,SOCKET (Ref # 49016)       | 49016-1203  | 1        |
| SCREW,FOCUS ADJUST,4X60 (Ref # 92009) | 92009-1816  | 1        |
| SCREW,5X16 (Ref # 92009A)             | 92009-1879  | 1        |
| NUT,5MM (Ref # 92015)                 | 92015-1157  | 1        |
| BULB,12V 60/55W,H4 (Ref # 92069)      | 92069-1002  | 1        |
| SPRING,HEAD LAMP LENS (Ref # 92145)   | 92145-1268  | 1        |
| SCREW,5X14 (Ref # 92172)              | 92172-0145  | 1        |
| TUBE,3.5X5.5X19 (Ref # 92191)         | 92191-1217  | 1        |
| NUT,SPECIAL,5MM (Ref # 92210)         | 92210-1060  | 1        |