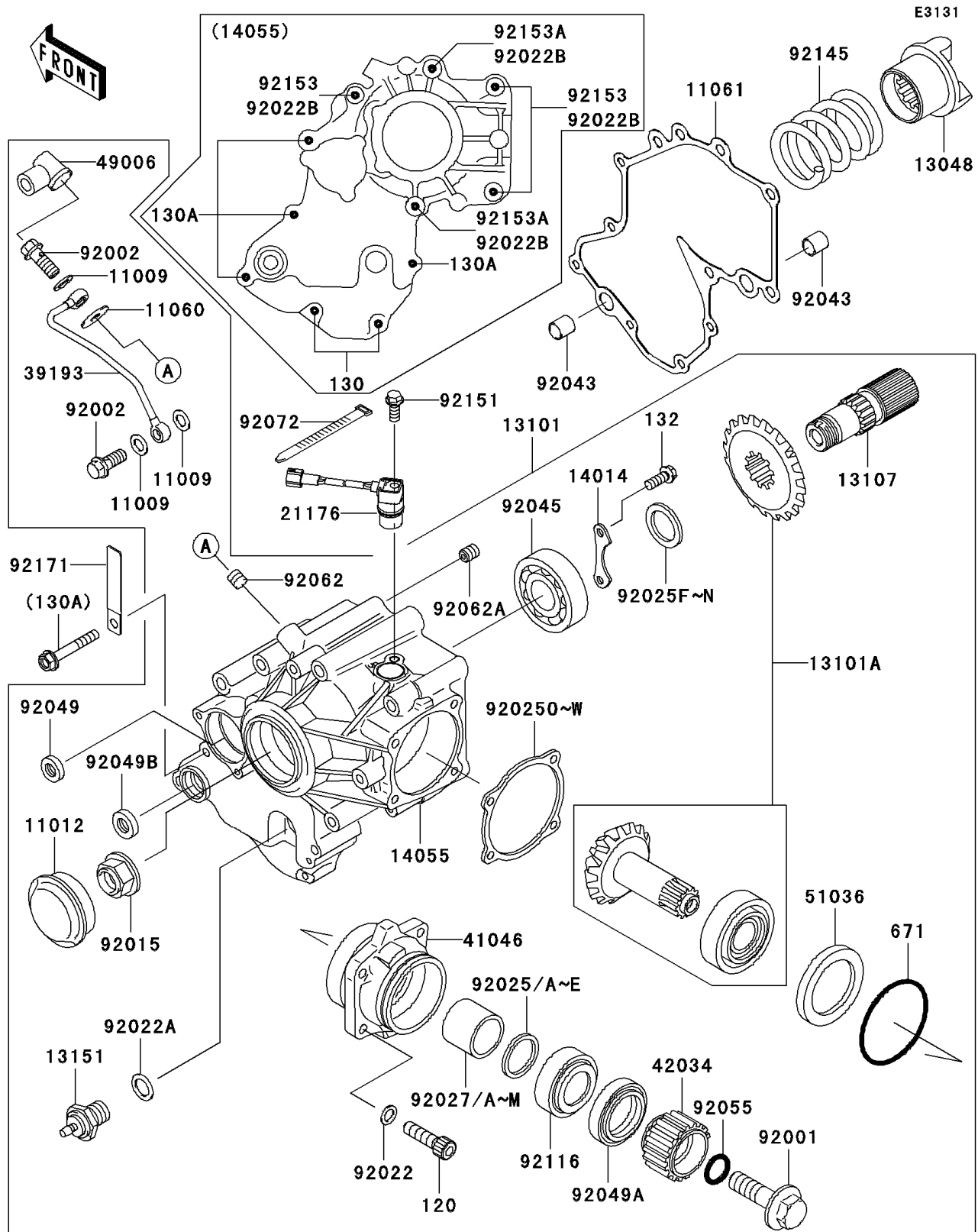


2006 Vulcan® 1600 Classic PARTS DIAGRAM

Front Bevel Gear



2006 Vulcan® 1600 Classic PARTS LIST

Front Bevel Gear

ITEM NAME	PART NUMBER	QUANTITY
GASKET,8.2X14X1.0 (Ref # 11009)	11009-1344	1
CAP (Ref # 11012)	11012-1071	1
GASKET,OIL PIPE,8.2X25X1.0 (Ref # 11060)	11060-1872	1
GASKET,BEVEL GEAR CASE (Ref # 11061)	11061-0046	1
CAM-DAMPER (Ref # 13048)	13048-1085	1
GEAR-ASSY (Ref # 13101)	13101-0020	1
GEAR-ASSY,BEVEL,FR (Ref # 13101A)	13101-5088	1
SHAFT,BEVEL,FR (Ref # 13107)	13107-1525	1
SWITCH-COMP,NEUTRAL (Ref # 13151)	13151-1010	1
PLATE-POSITION (Ref # 14014)	14014-1136	1
CASE-GEAR,FRONT BEVEL (Ref # 14055)	14055-0006	1
SENSOR,SPEED (Ref # 21176)	21176-0037	1
PIPE-OIL (Ref # 39193)	39193-1026	1
HOUSING-BEARING (Ref # 41046)	41046-1099	1
COUPLING,FR DRIVEN (Ref # 42034)	42034-1091	1
BOOT,DUST (Ref # 49006)	49006-1040	1
CUP (Ref # 51036)	51036-1002	1
BOLT,FLANGED,12X42 (Ref # 92001)	92001-1169	1
BOLT,8X20 (Ref # 92002)	92002-1429	1
NUT,24MM (Ref # 92015)	92015-1554	1
WASHER,8.5X13X1 (Ref # 92022)	92022-1028	1
WASHER,12X18X1.0 (Ref # 92022A)	92022-1211	1
WASHER,8.5X16X1.2 (Ref # 92022B)	92022-1582	1
SHIM,25.2X29.8X1.70 (Ref # 92025)	92025-1072	1
SHIM,25.2X29.8X1.72 (Ref # 92025A)	92025-1073	1
SHIM,25.2X29.8X1.74 (Ref # 92025B)	92025-1074	1
SHIM,25.2X29.8X1.76 (Ref # 92025C)	92025-1075	1
SHIM,25.2X29.8X1.78 (Ref # 92025D)	92025-1076	1
SHIM,25.2X29.8X1.80 (Ref # 92025E)	92025-1077	1

2006 Vulcan® 1600 Classic PARTS LIST

Front Bevel Gear

ITEM NAME	PART NUMBER	QUANTITY
SHIM,25.3X36X0.15 (Ref # 92025F)	92025-1688	1
SHIM,25.3X36X0.50 (Ref # 92025G)	92025-1689	1
SHIM,25.3X36X0.60 (Ref # 92025H)	92025-1690	1
SHIM,25.3X36X0.70 (Ref # 92025I)	92025-1691	1
SHIM,25.3X36X0.80 (Ref # 92025J)	92025-1692	1
SHIM,25.3X36X0.90 (Ref # 92025K)	92025-1693	1
SHIM,25.3X36X1.00 (Ref # 92025L)	92025-1694	1
SHIM,25.3X36X1.10 (Ref # 92025M)	92025-1695	1
SHIM,25.3X36X1.20 (Ref # 92025N)	92025-1696	1
SHIM,T=0.15 (Ref # 92025O)	92025-1818	1
SHIM,T=0.50 (Ref # 92025P)	92025-1819	1
BOLT-SOCKET,8X30 (Ref # 120)	120S0830	1
BOLT-FLANGED,6X30 (Ref # 130)	130S0630	1
BOLT-FLANGED,6X40 (Ref # 130A)	130S0640	1
BOLT-FLANGED-SMALL,6X16 (Ref # 132)	132G0616	1
SHIM,T=0.60 (Ref # 92025Q)	92025-1820	1
SHIM,T=0.70 (Ref # 92025R)	92025-1821	1
SHIM,T=0.80 (Ref # 92025S)	92025-1822	1
SHIM,T=0.90 (Ref # 92025T)	92025-1823	1
SHIM,T=1.00 (Ref # 92025U)	92025-1824	1
SHIM,T=1.20 (Ref # 92025V)	92025-1825	1
SHIM,T=0.10 (Ref # 92025W)	92025-1826	1
COLLAR,25.2X29.8X22.8 (Ref # 92027)	92027-1152	1
COLLAR,25.2X29.8X22.9 (Ref # 92027A)	92027-1153	1
COLLAR,25.2X29.8X23 (Ref # 92027B)	92027-1154	1
COLLAR,25.2X29.8X23.1 (Ref # 92027C)	92027-1155	1
COLLAR,25.2X29.8X23.2 (Ref # 92027D)	92027-1156	1
COLLAR,25.2X29.8X23.3 (Ref # 92027E)	92027-1157	1
COLLAR,25.2X29.8X23.4 (Ref # 92027F)	92027-1158	1

2006 Vulcan® 1600 Classic PARTS LIST

Front Bevel Gear

ITEM NAME	PART NUMBER	QUANTITY
COLLAR,25.2X29.8X23.5 (Ref # 92027G)	92027-1159	1
COLLAR,25.2X29.8X23.6 (Ref # 92027H)	92027-1160	1
COLLAR,25.2X29.8X23.7 (Ref # 92027I)	92027-1161	1
COLLAR,25.2X29.8X23.8 (Ref # 92027J)	92027-1162	1
COLLAR,25.2X29.8X23.9 (Ref # 92027K)	92027-1163	1
COLLAR,25.2X29.8X24 (Ref # 92027L)	92027-1164	1
COLLAR,25.2X29.8X24.1 (Ref # 92027M)	92027-1165	1
PIN,11.5X14X14 (Ref # 92043)	92043-1279	1
BEARING-BALL,6305C2 (Ref # 92045)	92045-1165	1
SEAL-OIL,SD-8187 (Ref # 92049)	92049-1017	1
SEAL-OIL,TC35527 (Ref # 92049A)	92049-1038	1
SEAL-OIL,TC13225.5 (Ref # 92049B)	92049-1519	1
RING-O,ID=18.64 (Ref # 92055)	92055-1044	1
NOZZLE,6X8,GREEN (Ref # 92062)	92062-1078	1
NOZZLE,10X10,SILVER (Ref # 92062A)	92062-1083	1
BAND,L=202 (Ref # 92072)	92072-1195	1
BEARING-ROLLER,HI-CAP30205 (Ref # 92116)	92116-1062	1
SPRING,CAM DAMPER (Ref # 92145)	92145-1102	1
BOLT,FLANGED,6X14 (Ref # 92151)	92151-1755	1
BOLT,8X80 (Ref # 92153)	92153-0433	1
BOLT,8X95 (Ref # 92153A)	92153-0434	1
CLAMP (Ref # 92171)	92171-0652	1
O RING,65MM (Ref # 671)	671B2565	1