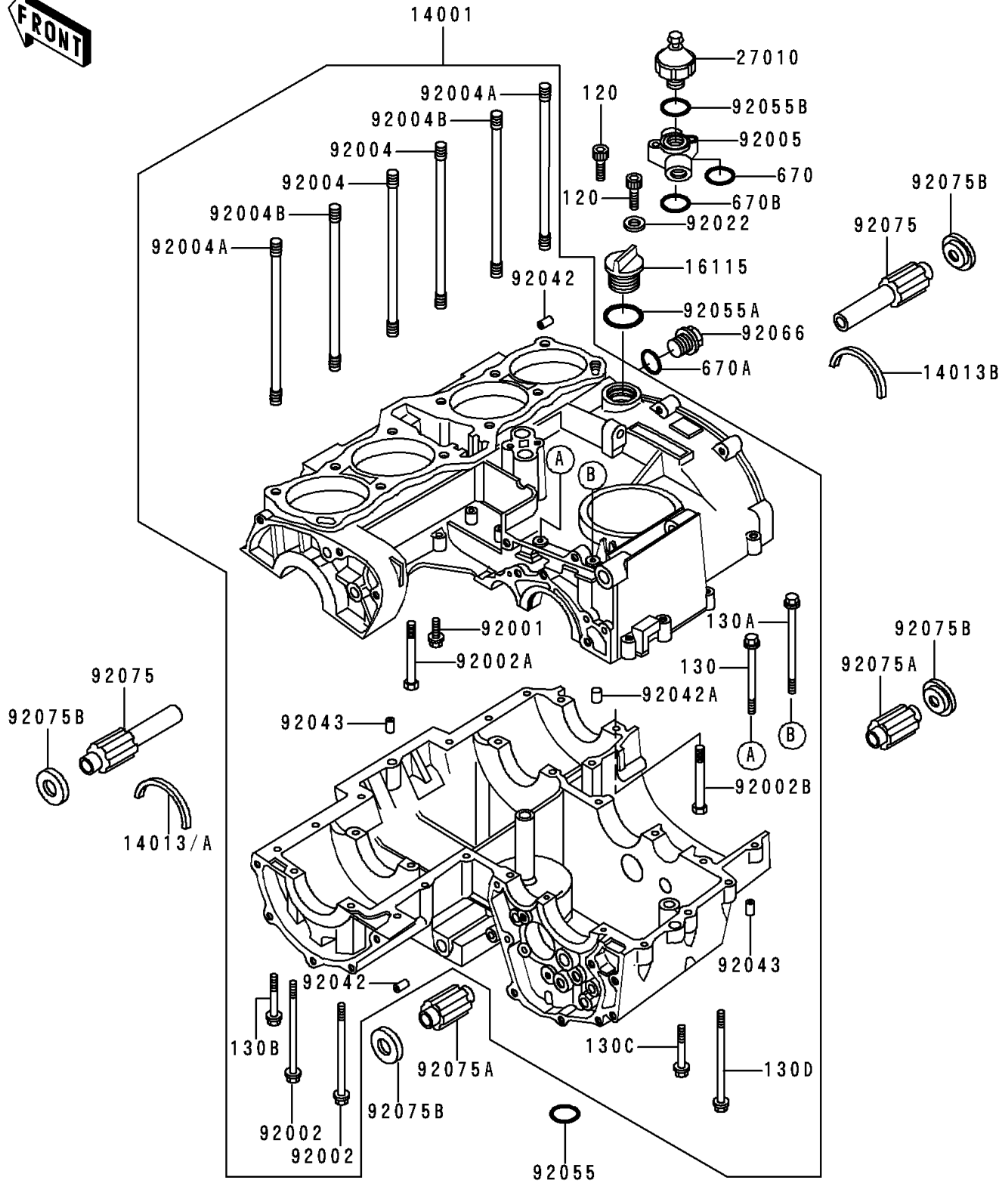


1996 Police 1000 PARTS DIAGRAM

Crankcase

E1411



1996 Police 1000 PARTS LIST

Crankcase

ITEM NAME	PART NUMBER	QUANTITY
BOLT-SOCKET (Ref # 120)	120Z0835	1
BOLT-FLANGED (Ref # 130)	130Y06100	1
BOLT-FLANGED (Ref # 130A)	130Y06115	1
BOLT-FLANGED (Ref # 130B)	130Y0640	1
BOLT-FLANGED (Ref # 130C)	130Y0655	1
BOLT-FLANGED (Ref # 130D)	130Y0695	1
O RING,9MM (Ref # 670)	670B1509	1
O RING,15MM (Ref # 670A)	670B2015	1
O RING,18MM (Ref # 670B)	670B2018	1
SET-CRANKCASE,SILVER (Ref # 14001)	14001-5099	1
RING-POSITION,T=1.90 (Ref # 14013)	14013-013	1
RING-POSITION,T=1.98 (Ref # 14013A)	14013-1004	1
RING-POSITION,T=1.98 (Ref # 14013B)	14013-1005	1
CAP-OIL FILLER (Ref # 16115)	16115-1062	1
SWITCH,OIL PRESSURE (Ref # 27010)	27010-1013	1
BOLT,FLANGED,8X16 (Ref # 92001)	92001-1349	1
BOLT,8X95 (Ref # 92002)	92002-1077	1
BOLT,8X72 (Ref # 92002A)	92002-1329	1
BOLT,8X80 (Ref # 92002B)	92002-1649	1
STUD,10X167 (Ref # 92004)	92004-1002	1
STUD,10X158 (Ref # 92004A)	92004-1003	1
STUD,10X133 (Ref # 92004B)	92004-1004	1
FITTING,OIL PRESSURE SWITCH (Ref # 92005)	92005-1030	1
WASHER,8.2X16X1 (Ref # 92022)	92022-1086	1
PIN,DOWEL,6.3X8X14 (Ref # 92042)	92042-007	1
PIN,DOWEL,6X16 (Ref # 92042A)	92042-016	1
PIN,DOWEL,10X14 (Ref # 92043)	92043-1037	1
RING-O,OD=18 (Ref # 92055)	92055-048	1
RING-O,31.5X2.6 (Ref # 92055A)	92055-049	1

1996 Police 1000 PARTS LIST

Crankcase

ITEM NAME	PART NUMBER	QUANTITY
RING-O,19.5X1.5 (Ref # 92055B)	92055-055	1
PLUG,14X12 (Ref # 92066)	92066-021	1
DAMPER,ENGINE MOUNT,UPP (Ref # 92075)	92075-1272	1
DAMPER,ENGINE MOUNT,LWR (Ref # 92075A)	92075-1273	1
DAMPER,ENGINE MOUNT,SIDE (Ref # 92075B)	92075-1274	1