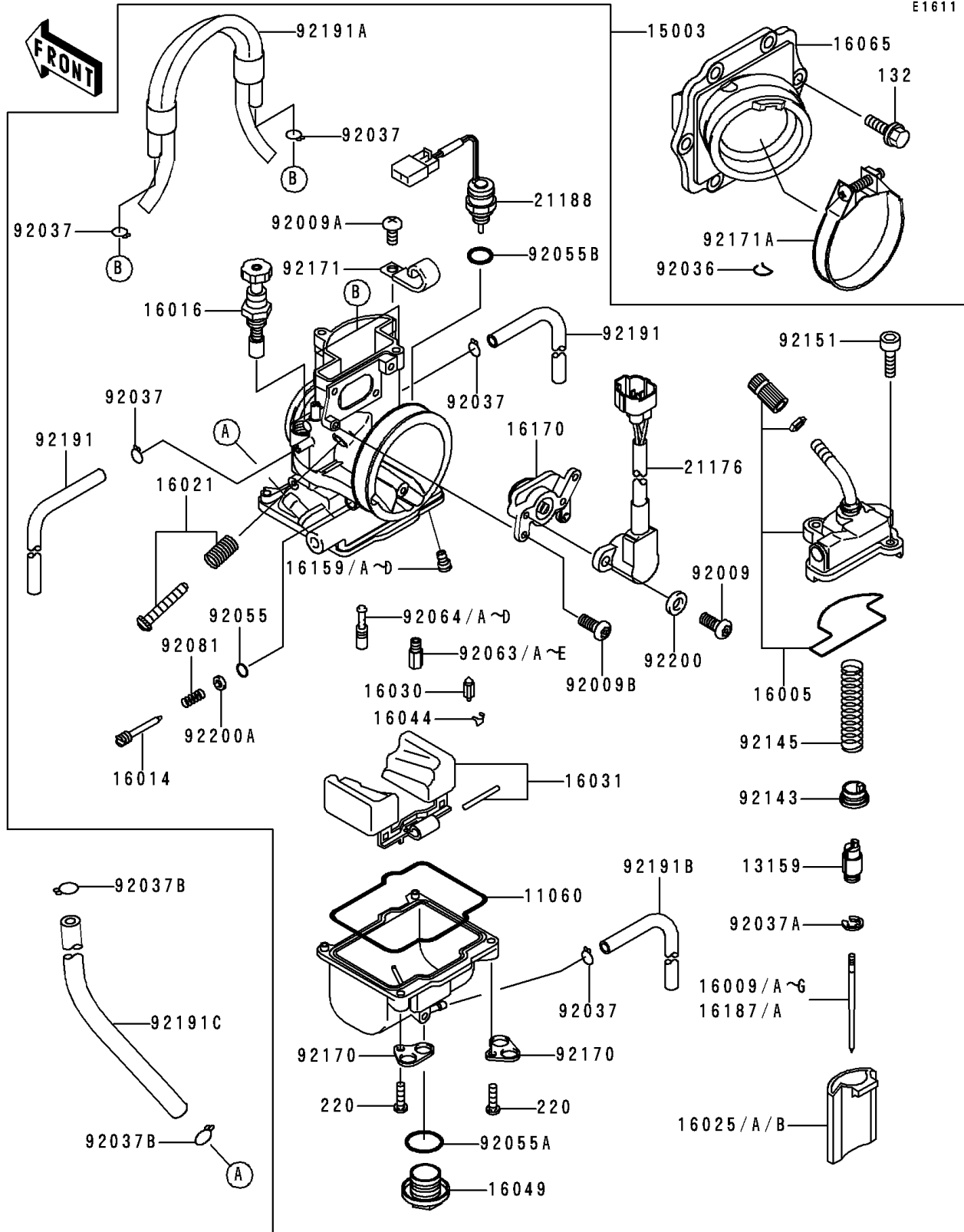


## 2000 KX™250 PARTS DIAGRAM

Carburetor

E1611



## 2000 KX™250 PARTS LIST

Carburetor

ITEM NAME	PART NUMBER	QUANTITY
GASKET,FLOAT CHAMBER (Ref # 11060)	11060-1254	1
CONNECTOR,THROTTLE CABLE (Ref # 13159)	13159-1063	1
CARBURETOR-ASSY (Ref # 15003)	15003-1524	1
TOP-CHAMBER (Ref # 16005)	16005-1083	1
NEEDLE-JET,N3WD (Ref # 16009)	16009-1914	1
SCREW-PILOT AIR (Ref # 16014)	16014-1058	1
PLUNGER (Ref # 16016)	16016-1085	1
SCREW-THROTTLE STOP (Ref # 16021)	16021-1198	1
VALVE-THROTTLE,#6 (Ref # 16025)	16025-1215	1
VALVE-THROTTLE,#7 (Ref # 16025A)	16025-1216	1
VALVE-THROTTLE,#8 (Ref # 16025B)	16025-1217	1
VALVE-FLOAT (Ref # 16030)	16030-1057	1
FLOAT (Ref # 16031)	16031-1100	1
CLAMP,FLOAT VALVE (Ref # 16044)	16044-007	1
COVER-MAIN JET (Ref # 16049)	16049-1051	1
HOLDER-CARBURETOR (Ref # 16065)	16065-1358	1
JET-POWER,#50 (Ref # 16159)	16159-1053	1
LINK-ASSY (Ref # 16170)	16170-1056	1
SENSOR (Ref # 21176)	21176-1089	1
SOLENOID (Ref # 21188)	21188-1005	1
SCREW (Ref # 92009)	92009-1781	1
SCREW,CLAMP (Ref # 92009A)	92009-1833	1
SCREW (Ref # 92009B)	92009-1889	1
RING-SNAP (Ref # 92036)	92036-018	1
CLAMP,TUBE (Ref # 92037)	92037-1396	1
CLAMP,JET NEEDLE (Ref # 92037A)	92037-1401	1
CLAMP,TUBE (Ref # 92037B)	92037-147	1
RING-O,PILOT ADJUST (Ref # 92055)	92055-1002	1
RING-O,MAIN JET COVER (Ref # 92055A)	92055-1167	1

## 2000 KX™250 PARTS LIST

Carburetor

ITEM NAME	PART NUMBER	QUANTITY
RING-O (Ref # 92055B)	92055-1580	1
JET-MAIN,#155 (Ref # 92063)	92063-1366	1
JET-MAIN,#158 (Ref # 92063A)	92063-1367	1
JET-MAIN,#160 (Ref # 92063B)	92063-1368	1
JET-MAIN,#162 (Ref # 92063C)	92063-1369	1
JET-MAIN,#165 (Ref # 92063D)	92063-1370	1
JET-MAIN,#170 (Ref # 92063E)	92063-1372	1
JET-PILOT,#52 (Ref # 92064)	92064-1130	1
JET-PILOT,#48 (Ref # 92064A)	92064-1143	1
JET-PILOT,#50 (Ref # 92064B)	92064-1144	1
JET-PILOT,#55 (Ref # 92064C)	92064-1145	1
JET-PILOT,#58 (Ref # 92064D)	92064-1146	1
SPRING,ADJUST SCREW (Ref # 92081)	92081-1555	1
COLLAR,THROTTLE VALVE (Ref # 92143)	92143-1201	1
SPRING,THROTTLE VALVE (Ref # 92145)	92145-1242	1
BOLT (Ref # 92151)	92151-1507	1
CLAMP (Ref # 92170)	92170-1582	1
BOLT-FLANGED-SMALL (Ref # 132)	132G0620	1
SCREW-PAN-CROS (Ref # 220)	220D0414	1
CLAMP (Ref # 92171)	92171-1077	1
CLAMP (Ref # 92171A)	92171-1105	1
TUBE,4X7X480 (Ref # 92191)	92191-1254	1
TUBE,AIR VENT (Ref # 92191A)	92191-1255	1
TUBE,3.5X6.5X330 (Ref # 92191B)	92191-1256	1
TUBE,5.3X10.5X160 (Ref # 92191C)	92191-1332	1
WASHER (Ref # 92200)	92200-1369	1
WASHER (Ref # 92200A)	92200-1466	1
NEEDLE-JET,N3WE (Ref # 16009A)	16009-1915	1
NEEDLE-JET,N3WF (Ref # 16009B)	16009-1916	1

## 2000 KX™250 PARTS LIST

Carburetor

ITEM NAME	PART NUMBER	QUANTITY
NEEDLE-JET,N3WG (Ref # 16009C)	16009-1917	1
NEEDLE-JET,N3YD (Ref # 16009D)	16009-1919	1
NEEDLE-JET,N3YE (Ref # 16009E)	16009-1920	1
NEEDLE-JET,N3YF (Ref # 16009F)	16009-1921	1
NEEDLE-JET,N3YG (Ref # 16009G)	16009-1922	1
JET-POWER,#52 (Ref # 16159A)	16159-1055	1
JET-POWER,#48 (Ref # 16159B)	16159-1058	1
JET-POWER,#42 (Ref # 16159C)	16159-1059	1
JET-POWER,#45 (Ref # 16159D)	16159-1060	1
NEEDLE-JET,N3WC (Ref # 16187)	16187-1122	1
NEEDLE-JET,N3YC (Ref # 16187A)	16187-1123	1