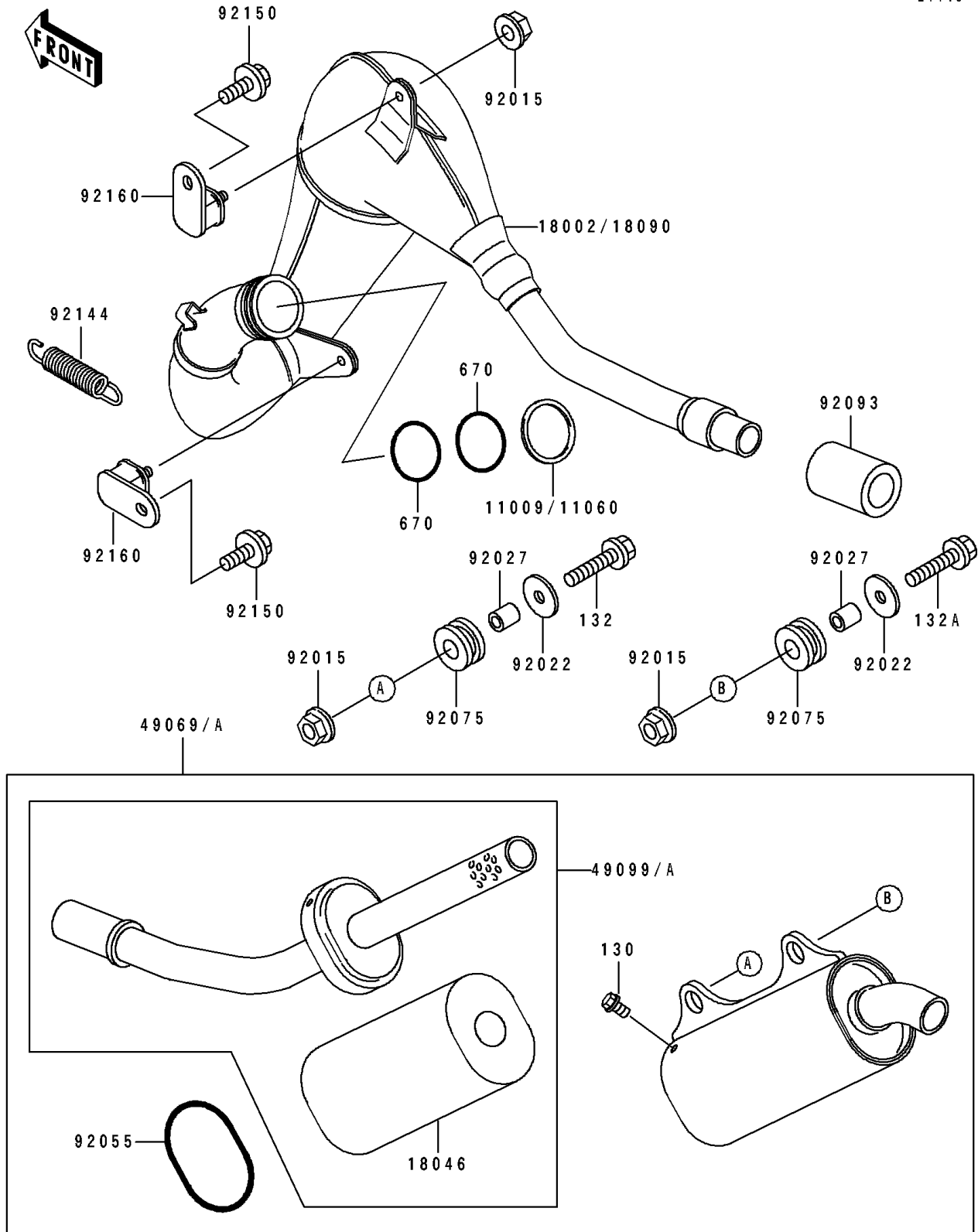


1990 KX™125 PARTS DIAGRAM

Muffler

E1140



1990 KX™125 PARTS LIST

Muffler

ITEM NAME	PART NUMBER	QUANTITY
GASKET,EXHAUST PIPE (Ref # 11009)	11009-1618	1
BODY-COMP-MUFFLER (Ref # 18002)	18002-1932	1
WOOL,BAFFLE PIPE,L=200 (Ref # 18046)	18046-1110	1
MUFFLER-ASSY (Ref # 49069)	49069-1114	1
BAFFLE-PIPE MUFFLER (Ref # 49099)	49099-1281	1
NUT,FLANGED,6MM (Ref # 92015)	92015-1078	1
WASHER,6.5X22X1.6 (Ref # 92022)	92022-237	1
COLLAR,6.8X10X11.5 (Ref # 92027)	92027-1210	1
RING-O,BAFFLE PIPE (Ref # 92055)	92055-1461	1
DAMPER,MUFFLER FITTING (Ref # 92075)	92075-1857	1
SEAL,MUFFLER CONNECTING (Ref # 92093)	92093-1291	1
SPRING,EXHAUST CONNECTING (Ref # 92144)	92144-1470	1
BOLT,6X14 (Ref # 92150)	92150-1340	1
DAMPER,MUFFLER,FR (Ref # 92160)	92160-1176	1
BOLT-FLANGED (Ref # 130)	130G0508	1
BOLT-FLANGED-SMALL (Ref # 132)	132G0630	1
BOLT-FLANGED-SMALL (Ref # 132A)	132G0640	1
O RING,39MM (Ref # 670)	670E3039	1