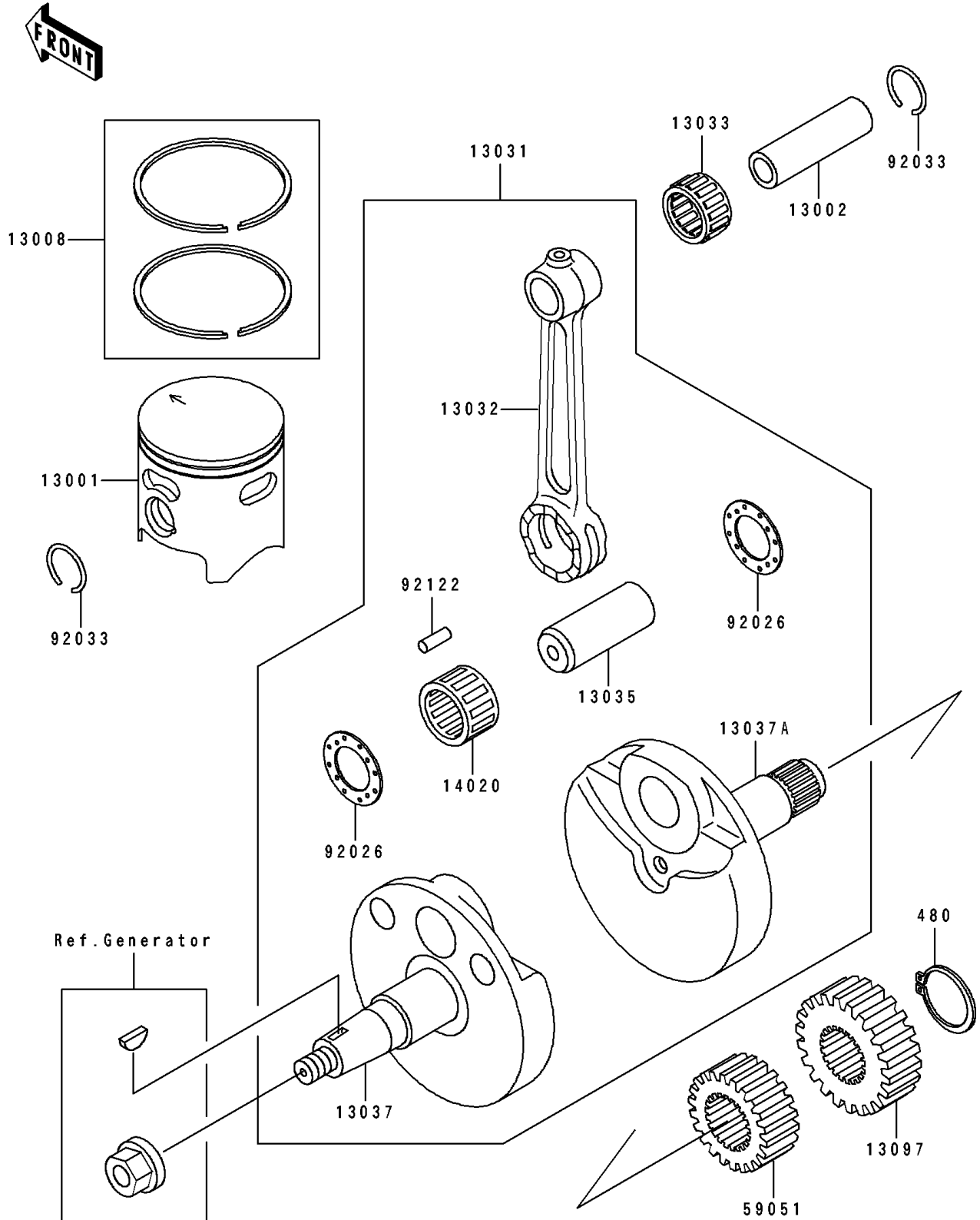


## 1995 KX™ 100 PARTS DIAGRAM

Crankshaft/Piston(s)

E1320



## 1995 KX™100 PARTS LIST

Crankshaft/Piston(s)

| ITEM NAME                                   | PART NUMBER | QUANTITY |
|---|-------------|----------|
| PISTON-ENGINE,(B) (Ref # 13001)             | 13001-1308  | 1        |
| PIN-PISTON (Ref # 13002)                    | 13002-1018  | 1        |
| RING-SET-PISTON (Ref # 13008)               | 13008-1107  | 1        |
| CRANKSHAFT-COMP (Ref # 13031)               | 13031-1313  | 1        |
| ROD-CONNECTING (Ref # 13032)                | 13032-1039  | 1        |
| BEARING-SMALL END,14R1818AP-1 (Ref # 13033) | 13033-1053  | 1        |
| PIN-CRANK (Ref # 13035)                     | 13035-1054  | 1        |
| CRANKSHAFT,LH (Ref # 13037)                 | 13037-1396  | 1        |
| CRANKSHAFT,RH (Ref # 13037A)                | 13037-1397  | 1        |
| GEAR-PRIMARY SPUR,20T (Ref # 13097)         | 13097-1148  | 1        |
| RETAINER (Ref # 14020)                      | 14020-1076  | 1        |
| GEAR-SPUR,PUMP,22T (Ref # 59051)            | 59051-1146  | 1        |
| SPACER,22.2X37X1.0 (Ref # 92026)            | 92026-1136  | 1        |
| RING-SNAP (Ref # 92033)                     | 92033-1050  | 1        |
| ROLLER (Ref # 92122)                        | 92122-1177  | 1        |
| CIRCLIP-TYPE-C,16MM (Ref # 480)             | 480J1600    | 1        |