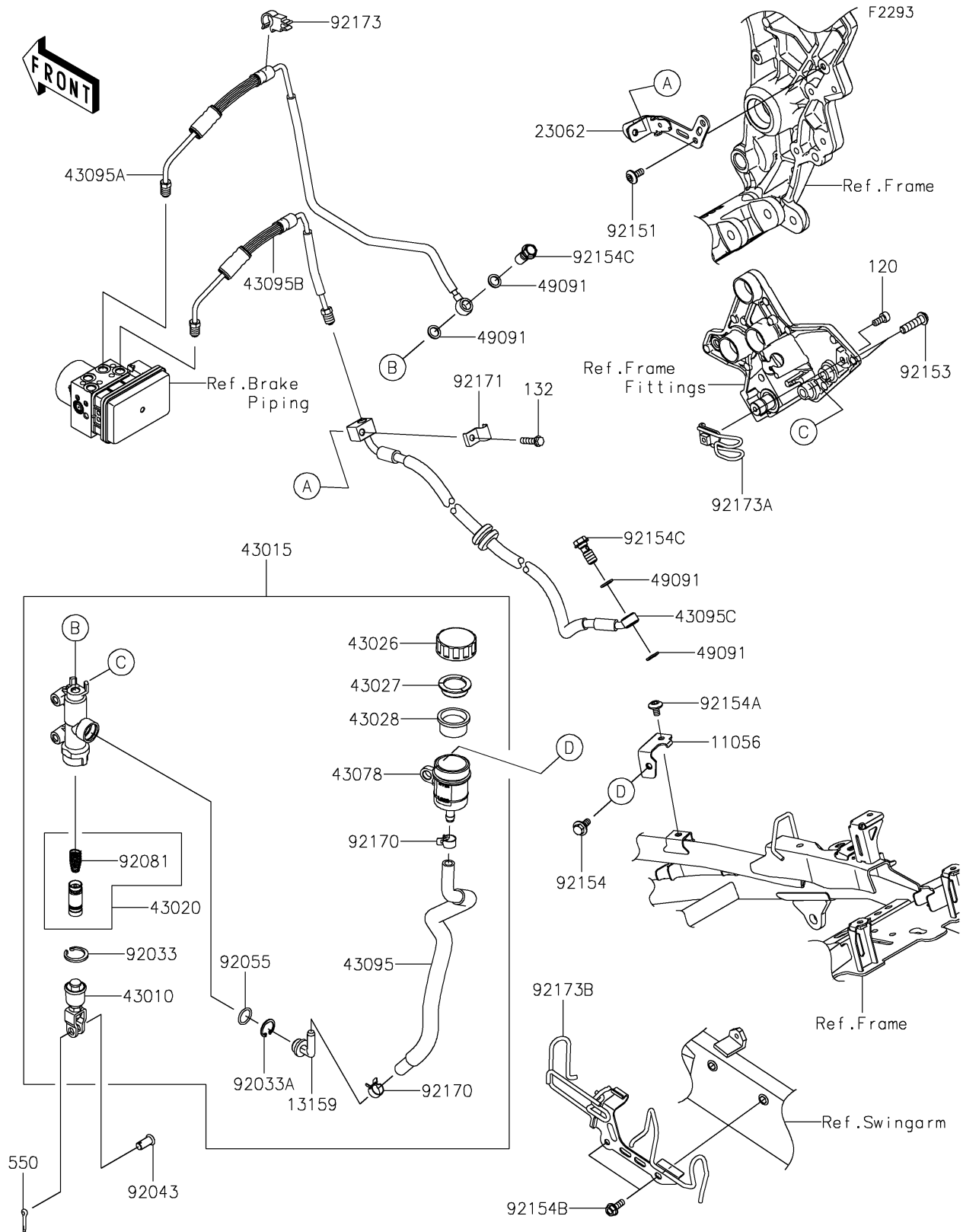


## 2019 PARTS DIAGRAM

Rear Master Cylinder



## 2019 PARTS LIST

Rear Master Cylinder

ITEM NAME	PART NUMBER	QUANTITY
BRACKET,RESERVOIR TANK (Ref # 11056)	11056-7304	1
BOLT-SOCKET,6X14 (Ref # 120)	120CB0614	1
CONNECTOR (Ref # 13159)	13159-1056	1
BOLT-FLANGED-SMALL,6X25 (Ref # 132)	132BA0625	1
BRACKET-COMP (Ref # 23062)	23062-1178	1
ROD-ASSY-BRAKE (Ref # 43010)	43010-1062	1
CYLINDER-ASSY-MASTER,RR (Ref # 43015)	43015-0572	1
PISTON-COMP-BRAKE (Ref # 43020)	43020-1057	1
CAP-BRAKE (Ref # 43026)	43026-0009	1
PLATE-DIAPHRAGM (Ref # 43027)	43027-1053	1
DIAPHRAGM (Ref # 43028)	43028-1065	1
RESERVOIR (Ref # 43078)	43078-0060	1
HOSE-BRAKE,RR MASTER CYLINDER (Ref # 43095)	43095-0700	1
HOSE-BRAKE,MASTER CYLINDER-HU (Ref # 43095A)	43095-1589	1
HOSE-BRAKE,HU-SWING ARM (Ref # 43095B)	43095-1590	1
HOSE-BRAKE,SWING ARM-CALIPER (Ref # 43095C)	43095-1591	1
WASHER-SEAL,10.1X14.5X1.5 (Ref # 49091)	49091-0001	1
PIN-COTTER,2.0X15 (Ref # 550)	550AA2015	1
RING-SNAP,20.9X24.6X1.2 (Ref # 92033)	92033-0079	1
RING-SNAP,20.5MM (Ref # 92033A)	92033-1186	1
PIN (Ref # 92043)	92043-0904	1
RING-O,14.8X2.4 (Ref # 92055)	92055-0741	1
SPRING,MASTER CYLINDER (Ref # 92081)	92081-1737	1
BOLT,SOCKET,6X14 (Ref # 92151)	92151-1654	1
BOLT,SOCKET,8X30 (Ref # 92153)	92153-0393	1
BOLT,FLANGED,6X16 (Ref # 92154)	92154-0385	1
BOLT,SOCKET,6X10 (Ref # 92154A)	92154-0774	1
BOLT,FLANGED,6X16 (Ref # 92154B)	92154-0899	1
BOLT,BANJO,10X23 (Ref # 92154C)	92154-1712	1

## 2019 PARTS LIST

Rear Master Cylinder

ITEM NAME	PART NUMBER	QUANTITY
CLAMP,HOSE (Ref # 92170)	92170-1091	1
CLAMP (Ref # 92171)	92171-0620	1
CLAMP (Ref # 92173)	92173-0170	1
CLAMP,RR BRAKE HOSE (Ref # 92173A)	92173-1388	1
CLAMP,SWING ARM (Ref # 92173B)	92173-1913	1