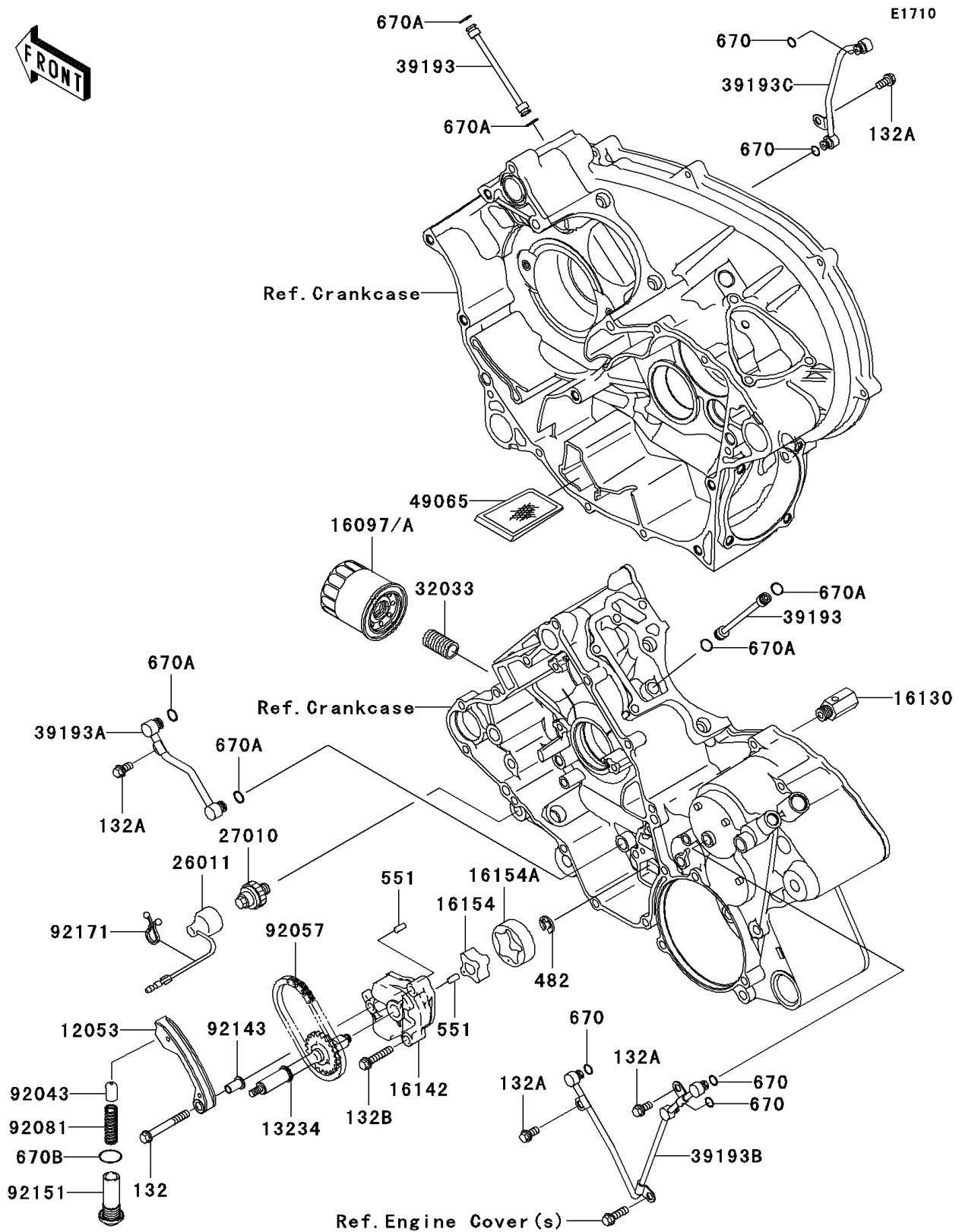


2006 Brute Force® 650 4x4i Realtree Hardwoods Green® HD™ PARTS DIAGRAM

Oil Pump/Oil Filter



2006 Brute Force® 650 4x4i Realtree Hardwoods Green® HD™ PARTS LIST

Oil Pump/Oil Filter

| ITEM NAME | PART NUMBER | QUANTITY |
|---------------------------------------|-------------|----------|
| BOLT-FLANGED-SMALL,6X50 (Ref # 132) | 132BB0650 | 1 |
| BOLT-FLANGED-SMALL,6X12 (Ref # 132A) | 132BD0612 | 1 |
| BOLT-FLANGED-SMALL,6X30 (Ref # 132B) | 132BD0630 | 1 |
| CIRCLIP-TYPE-E,6MM (Ref # 482) | 482J6000 | 1 |
| PIN-DOWEL,4X8 (Ref # 551) | 551A0408 | 1 |
| O RING (Ref # 670) | 670D1505 | 1 |
| O RING,7MM (Ref # 670A) | 670D1507 | 1 |
| O RING,16MM (Ref # 670B) | 670D2016 | 1 |
| GUIDE-CHAIN,SLACK (Ref # 12053) | 12053-1440 | 1 |
| SHAFT-COMP,OIL PUMP (Ref # 13234) | 13234-1112 | 1 |
| FILTER-ASSY-OIL (Ref # 16097) | 16097-0003 | 1 |
| FILTER-ASSY-OIL (Ref # 16097A) | 16097-0004 | 1 |
| VALVE-ASSY-RELIEF (Ref # 16130) | 16130-1058 | 1 |
| COVER-PUMP (Ref # 16142) | 16142-1162 | 1 |
| ROTOR-PUMP,INNER (Ref # 16154) | 16154-2059 | 1 |
| ROTOR-PUMP,OUTER (Ref # 16154A) | 16154-2060 | 1 |
| WIRE-LEAD (Ref # 26011) | 26011-1755 | 1 |
| SWITCH,OIL PRESSURE (Ref # 27010) | 27010-1313 | 1 |
| PIPE,OIL FILTER (Ref # 32033) | 32033-1535 | 1 |
| PIPE-OIL,CRANKCASE-HEAD (Ref # 39193) | 39193-0015 | 1 |
| PIPE-OIL,CRANKSHAFT (Ref # 39193A) | 39193-1052 | 1 |
| PIPE-OIL,CRANKCASE,LH (Ref # 39193B) | 39193-1053 | 1 |
| PIPE-OIL,CRANKCASE,RH (Ref # 39193C) | 39193-1054 | 1 |
| FILTER-OIL (Ref # 49065) | 49065-1086 | 1 |
| PIN (Ref # 92043) | 92043-076 | 1 |
| CHAIN,DID SCR-0409 SDH (Ref # 92057) | 92057-0075 | 1 |
| SPRING (Ref # 92081) | 92081-112 | 1 |
| COLLAR (Ref # 92143) | 92143-1857 | 1 |
| BOLT,16X41 (Ref # 92151) | 92151-1781 | 1 |

2006 Brute Force® 650 4x4i Realtree Hardwoods Green® HD™ PARTS LIST

Oil Pump/Oil Filter

| ITEM NAME | PART NUMBER | QUANTITY |
|---------------------|-------------|----------|
| CLAMP (Ref # 92171) | 92171-1329 | 1 |