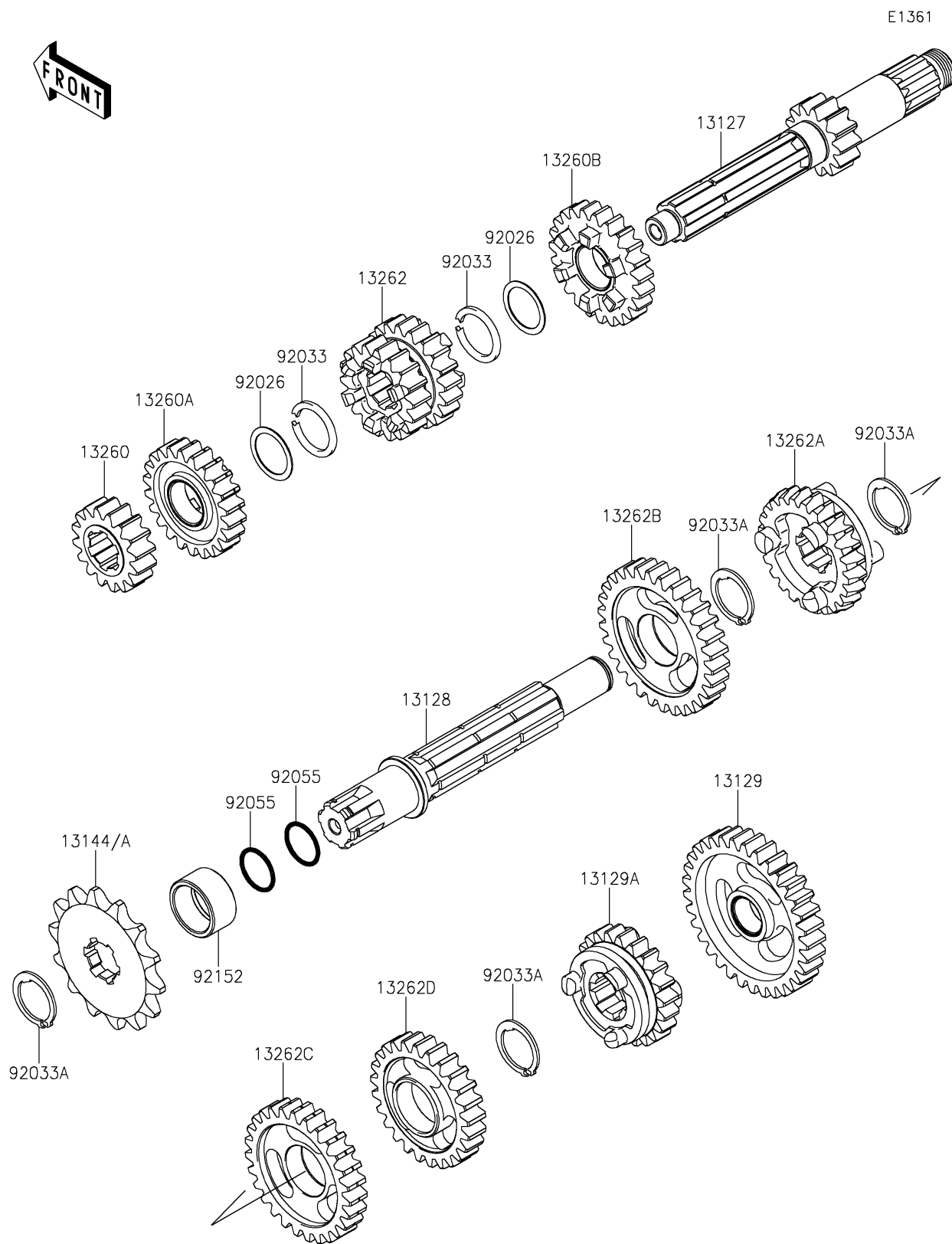


## 2019 KX™100 PARTS DIAGRAM

Transmission



## 2019 KX™100 PARTS LIST

Transmission

ITEM NAME	PART NUMBER	QUANTITY
SHAFT-TRANSMISSION INPUT,13T (Ref # 13127)	13127-1261	1
SHAFT-TRANSMISSION OUTPUT (Ref # 13128)	13128-0022	1
GEAR,OUTPUT LOW,33T (Ref # 13129)	13129-1725	1
GEAR,OUTPUT 6TH,22T (Ref # 13129A)	13129-1730	1
SPROCKET-OUTPUT,13T (Ref # 13144)	13144-0564	1
SPROCKET-OUTPUT,14T (Ref # 13144A)	13144-1022	1
GEAR,INPUT 2ND,16T (Ref # 13260)	13260-1014	1
GEAR,INPUT 5TH,22T (Ref # 13260A)	13260-1950	1
GEAR,INPUT 6TH,23T (Ref # 13260B)	13260-1951	1
GEAR,INPUT 3RD&4TH,18&20T (Ref # 13262)	13262-0180	1
GEAR,OUTPUT 5TH,24T (Ref # 13262A)	13262-0181	1
GEAR,OUTPUT 2ND,30T (Ref # 13262B)	13262-0298	1
GEAR,OUTPUT 3RD,27T (Ref # 13262C)	13262-0299	1
GEAR,OUTPUT 4TH,25T (Ref # 13262D)	13262-0300	1
SPACER,18X23X0.50 (Ref # 92026)	92026-1602	1
RING-SNAP (Ref # 92033)	92033-028	1
RING-SNAP,18MM (Ref # 92033A)	92033-1079	1
RING-O,17.5X1.5 (Ref # 92055)	92055-022	1
COLLAR,20X25X12.9 (Ref # 92152)	92152-0195	1