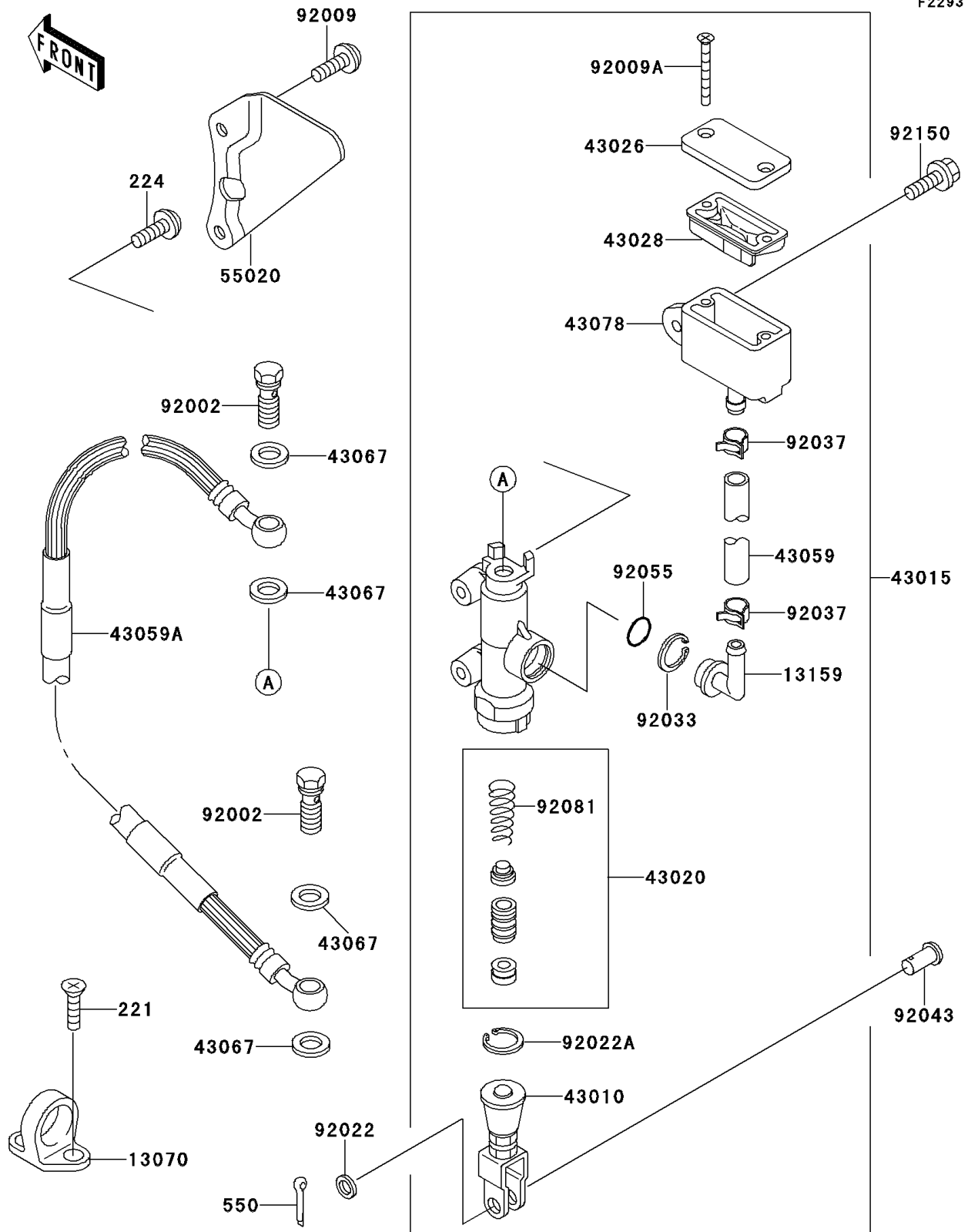


## 1993 KX™250 PARTS DIAGRAM

Rear Master Cylinder



## 1993 KX™250 PARTS LIST

Rear Master Cylinder

ITEM NAME	PART NUMBER	QUANTITY
GUIDE,HOSE (Ref # 13070)	13070-1144	1
CONNECTOR (Ref # 13159)	13159-1056	1
SCREW-CSK-CROS,6X10 (Ref # 221)	221B0610	1
SCREW-PAN-WP-CROS (Ref # 224)	224B0614	1
ROD-ASSY-BRAKE (Ref # 43010)	43010-1068	1
CYLINDER-ASSY-MASTER,RR (Ref # 43015)	43015-1469	1
PISTON-COMP-BRAKE (Ref # 43020)	43020-1057	1
CAP-BRAKE (Ref # 43026)	43026-1075	1
DIAPHRAGM (Ref # 43028)	43028-1067	1
HOSE-BRAKE (Ref # 43059)	43059-1561	1
HOSE-BRAKE,RR (Ref # 43059A)	43059-1716	1
WASHER,10.5X15X1.5 (Ref # 43067)	43067-001	1
RESERVOIR (Ref # 43078)	43078-1122	1
PIN-COTTER,2.0X15 (Ref # 550)	550D2015	1
GUARD,RR M/CYLINDER&OIL TANK (Ref # 55020)	55020-1372	1
BOLT,OIL,L=23 (Ref # 92002)	92002-1888	1
SCREW,6X14,WHITE (Ref # 92009)	92009-1287	1
SCREW,4X40 (Ref # 92009A)	92009-1596	1
WASHER,8.5X13X1 (Ref # 92022)	92022-1028	1
WASHER,CIRCRIP (Ref # 92022A)	92022-1601	1
RING-SNAP,20.5MM (Ref # 92033)	92033-1186	1
CLAMP (Ref # 92037)	92037-1710	1
PIN (Ref # 92043)	92043-1039	1
RING-O,MASTER CYLINDER (Ref # 92055)	92055-1251	1
SPRING,MASTER CYLINDER (Ref # 92081)	92081-1737	1
BOLT,FLANGED,6X25 (Ref # 92150)	92150-1507	1