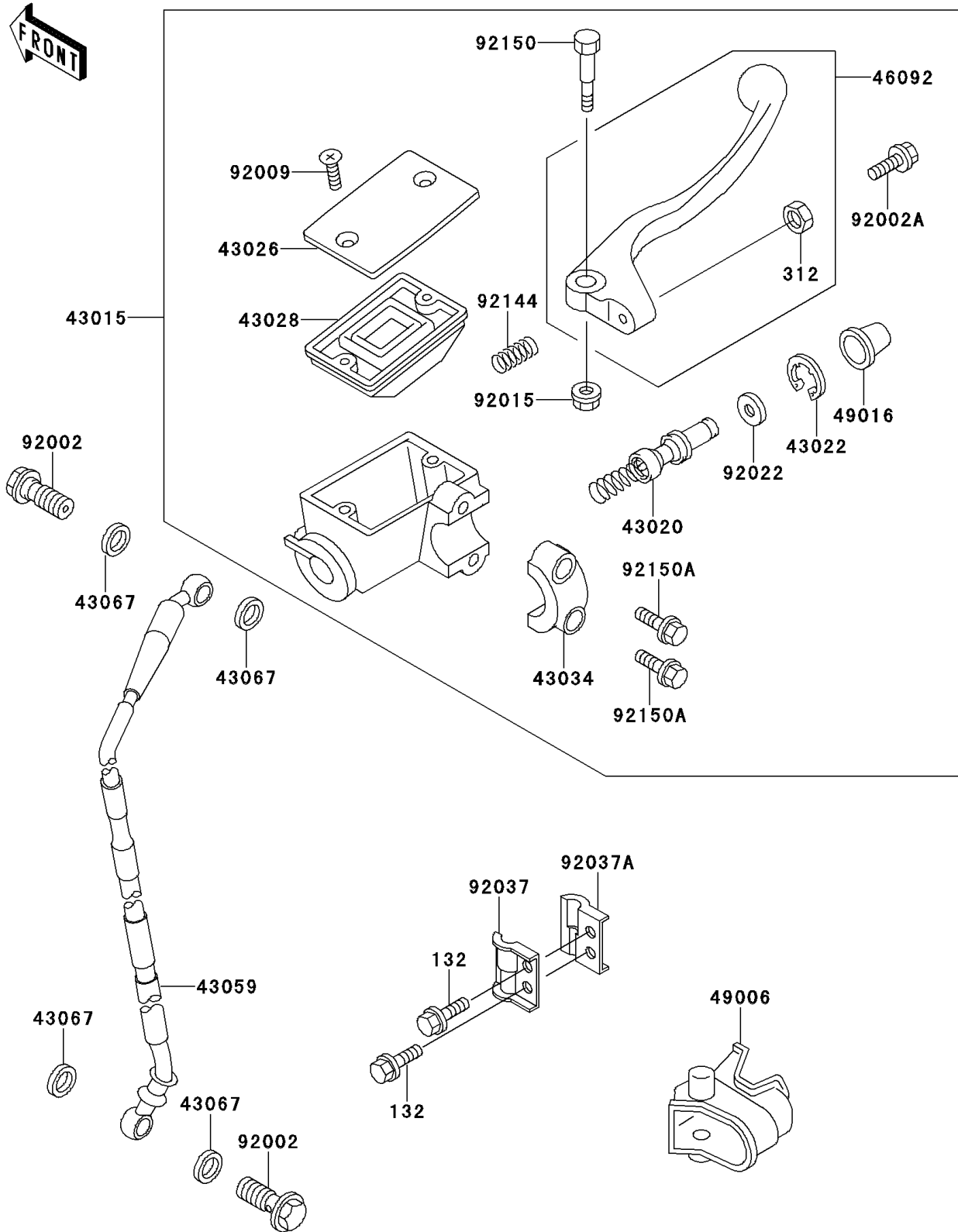


## 1993 KX™250 PARTS DIAGRAM

Front Master Cylinder

F2291



## 1993 KX™250 PARTS LIST

Front Master Cylinder

| ITEM NAME                                | PART NUMBER | QUANTITY |
|--|-------------|----------|
| BOLT-FLANGED-SMALL (Ref # 132)           | 132G0616    | 1        |
| NUT-HEX,5MM (Ref # 312)                  | 312B0500    | 1        |
| CYLINDER-ASSY-MASTER,FR (Ref # 43015)    | 43015-1544  | 1        |
| PISTON-COMP-BRAKE (Ref # 43020)          | 43020-1105  | 1        |
| STOPPER-BRAKE,PISTON (Ref # 43022)       | 43022-1010  | 1        |
| CAP-BRAKE (Ref # 43026)                  | 43026-1075  | 1        |
| DIAPHRAGM (Ref # 43028)                  | 43028-1067  | 1        |
| HOLDER-BRAKE (Ref # 43034)               | 43034-1110  | 1        |
| HOSE-BRAKE,FR (Ref # 43059)              | 43059-1577  | 1        |
| WASHER,10.5X15X1.5 (Ref # 43067)         | 43067-001   | 1        |
| LEVER-GRIP,FRONT BRAKE (Ref # 46092)     | 46092-1178  | 1        |
| BOOT,FRONT BRAKE LEVER (Ref # 49006)     | 49006-1231  | 1        |
| COVER-SEAL,MASTER CYLINDER (Ref # 49016) | 49016-1044  | 1        |
| BOLT,OIL,L=23 (Ref # 92002)              | 92002-1888  | 1        |
| BOLT,ADJUST (Ref # 92002A)               | 92002-1893  | 1        |
| SCREW,4MM (Ref # 92009)                  | 92009-1458  | 1        |
| NUT,FLANGED,6MM (Ref # 92015)            | 92015-1528  | 1        |
| WASHER (Ref # 92022)                     | 92022-1814  | 1        |
| CLAMP,BRAKE HOSE,OUTSIDE (Ref # 92037)   | 92037-1362  | 1        |
| CLAMP,BRAKE HOSE,INSIDE (Ref # 92037A)   | 92037-1363  | 1        |
| SPRING,RETURN (Ref # 92144)              | 92144-1725  | 1        |
| BOLT (Ref # 92150)                       | 92150-1451  | 1        |
| BOLT (Ref # 92150A)                      | 92150-1452  | 1        |