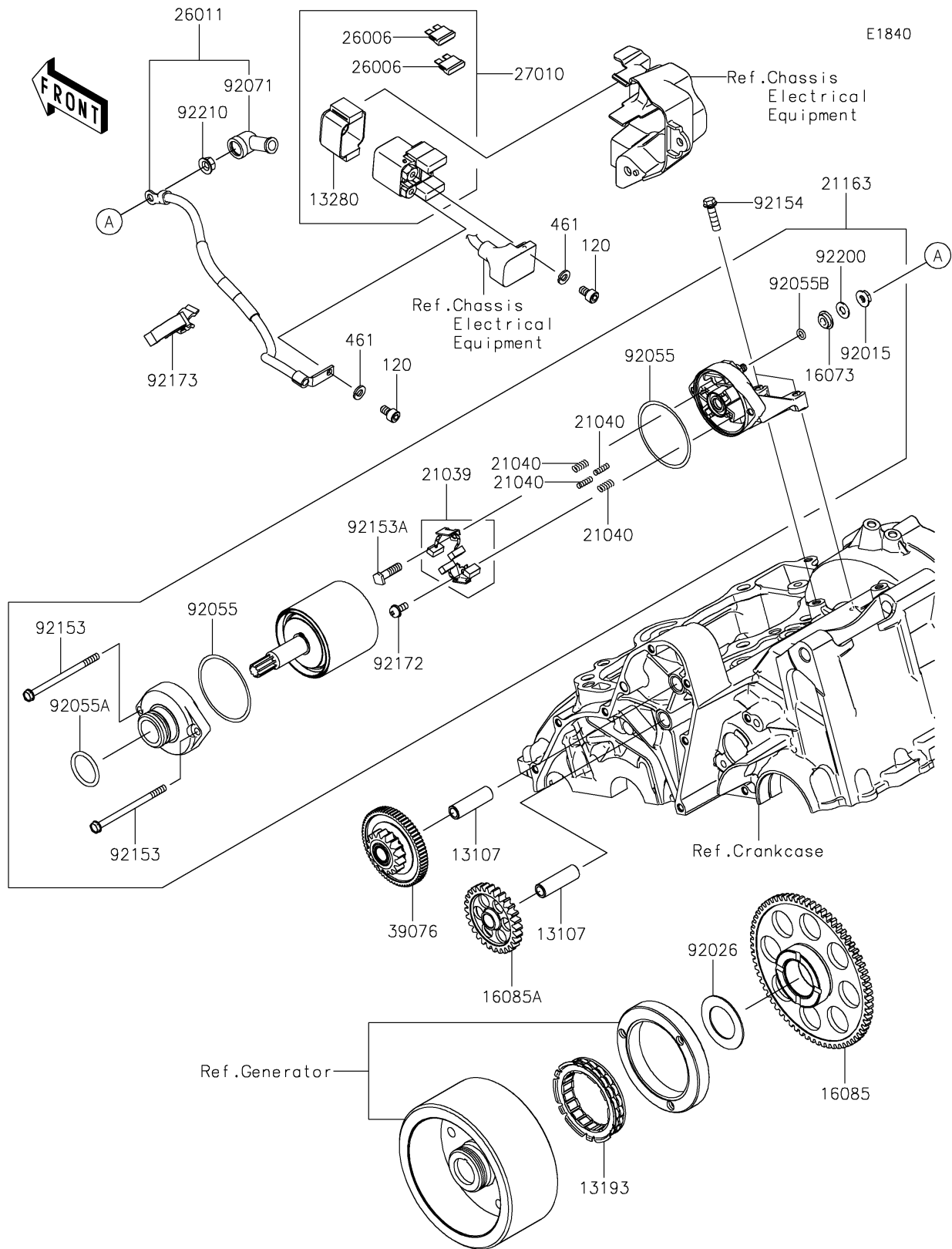


## 2017 PARTS DIAGRAM

Starter Motor



## 2017 PARTS LIST

Starter Motor

| ITEM NAME                          | PART NUMBER | QUANTITY |
|------------------------------------|-------------|----------|
| BOLT-SOCKET,6X10 (Ref # 120)       | 120CB0610   | 1        |
| SHAFT,IDLE GEAR (Ref # 13107)      | 13107-1106  | 1        |
| CLUTCH-ASSY-ONEWAY (Ref # 13193)   | 13193-0006  | 1        |
| HOLDER (Ref # 13280)               | 13280-0710  | 1        |
| INSULATOR (Ref # 16073)            | 16073-0053  | 1        |
| GEAR,67T (Ref # 16085)             | 16085-0076  | 1        |
| GEAR,IDLE,28T (Ref # 16085A)       | 16085-0664  | 1        |
| BRUSH,CARBON (Ref # 21039)         | 21039-0004  | 1        |
| SPRING-BRUSH (Ref # 21040)         | 21040-0003  | 1        |
| STARTER-ELECTRIC (Ref # 21163)     | 21163-0746  | 1        |
| FUSE,BLADE,30A,GREEN (Ref # 26006) | 26006-1006  | 1        |
| WIRE-LEAD (Ref # 26011)            | 26011-0939  | 1        |
| SWITCH,MAGNETIC (Ref # 27010)      | 27010-0709  | 1        |
| LIMITER,16T&66T (Ref # 39076)      | 39076-0034  | 1        |
| WASHER-SPRING,6MM (Ref # 461)      | 461DB0600   | 1        |
| NUT,STARTER MOTOR (Ref # 92015)    | 92015-1476  | 1        |
| SPACER,29.1X47.5X1.2 (Ref # 92026) | 92026-087   | 1        |
| RING-O (Ref # 92055)               | 92055-0136  | 1        |
| RING-O (Ref # 92055A)              | 92055-1276  | 1        |
| RING-O,4.5X2.0 (Ref # 92055B)      | 92055-1370  | 1        |
| GROMMET (Ref # 92071)              | 92071-0024  | 1        |
| BOLT (Ref # 92153)                 | 92153-1850  | 1        |
| BOLT (Ref # 92153A)                | 92153-1866  | 1        |
| BOLT,FLANGED,6X22 (Ref # 92154)    | 92154-0504  | 1        |
| SCREW (Ref # 92172)                | 92172-0334  | 1        |
| CLAMP (Ref # 92173)                | 92173-1691  | 1        |
| WASHER (Ref # 92200)               | 92200-0386  | 1        |
| NUT,6MM (Ref # 92210)              | 92210-0188  | 1        |