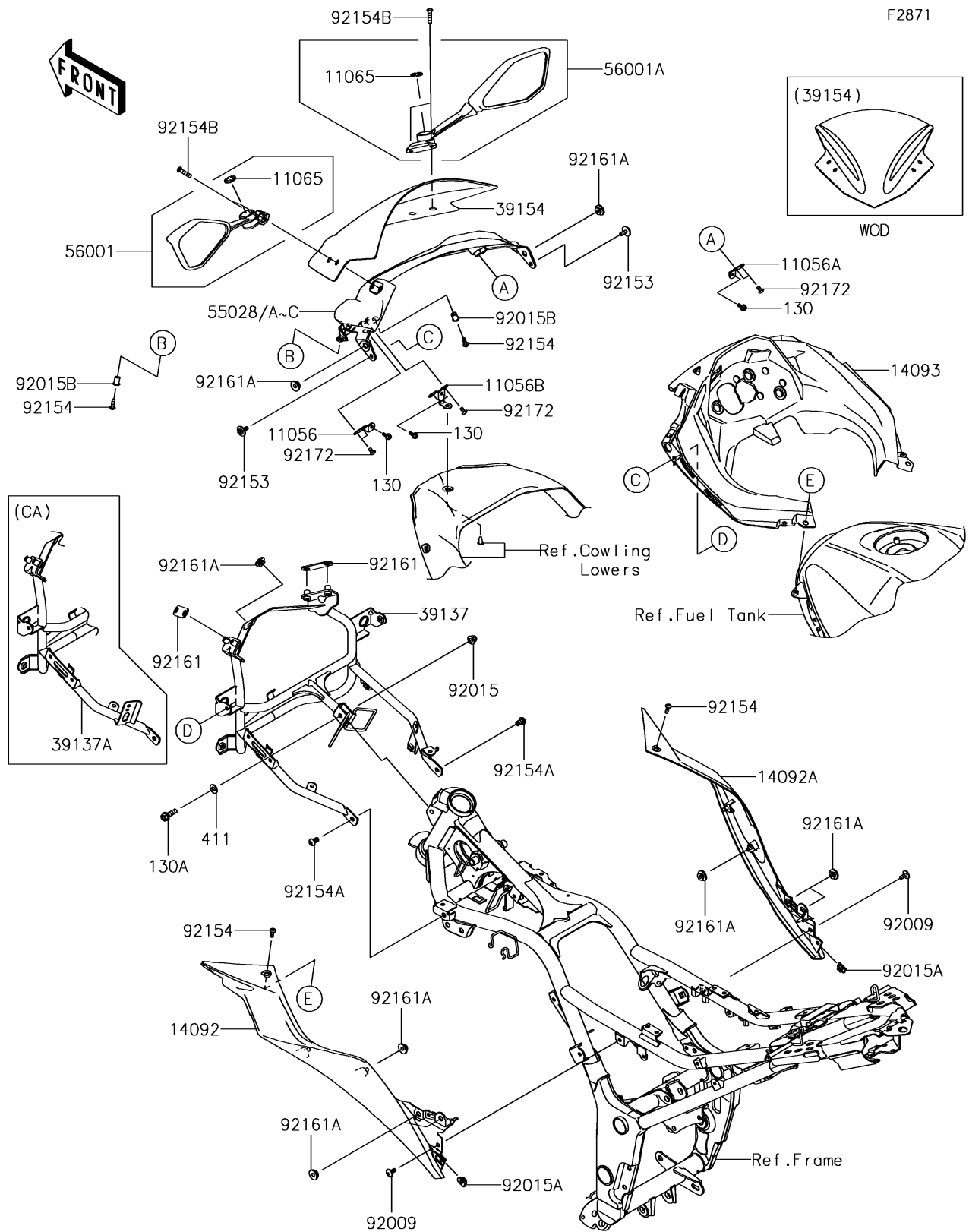


## 2016 NINJA® 300 PARTS DIAGRAM

Cowling



## 2016 NINJA® 300 PARTS LIST

### Cowling

| ITEM NAME                                  | PART NUMBER    | QUANTITY |
|--|----------------|----------|
| BRACKET,COWL. STAY,LH (Ref # 11056)        | 11056-1608     | 1        |
| BRACKET,COWL. STAY,RH (Ref # 11056A)       | 11056-1610     | 1        |
| BRACKET,COWL. STAY (Ref # 11056B)          | 11056-1611     | 1        |
| CAP,MIRROR (Ref # 11065)                   | 11065-0945     | 1        |
| BOLT-FLANGED,5X12 (Ref # 130)              | 130BA0512      | 1        |
| BOLT-FLANGED,8X25 (Ref # 130A)             | 130BB0825      | 1        |
| COVER,TANK,LH (Ref # 14092)                | 14092-0922     | 1        |
| COVER,TANK,RH (Ref # 14092A)               | 14092-0923     | 1        |
| COVER,METER (Ref # 14093)                  | 14093-0249     | 1        |
| STAY-COMP,COWLING,F.S.BLACK (Ref # 39137A) | 39137-0566-18R | 1        |
| WINDSHIELD (Ref # 39154)                   | 39154-0318     | 1        |
| WASHER-PLAIN,8.5X18X1.6 (Ref # 411)        | 411AB0800      | 1        |
| COWLING,UPP,P.RED (Ref # 55028)            | 55028-0496-234 | 1        |
| COWLING,UPP,M.M.C.GRAY (Ref # 55028A)      | 55028-0496-51B | 1        |
| MIRROR-ASSY,LH (Ref # 56001)               | 56001-0239     | 1        |
| MIRROR-ASSY,RH (Ref # 56001A)              | 56001-0240     | 1        |
| SCREW,6X14 (Ref # 92009)                   | 92009-1662     | 1        |
| NUT,CAP,8MM,BLACK (Ref # 92015)            | 92015-1174     | 1        |
| NUT,5MM (Ref # 92015A)                     | 92015-1627     | 1        |
| NUT,WELL,5MM (Ref # 92015B)                | 92015-1757     | 1        |
| BOLT,6X16 (Ref # 92153)                    | 92153-1423     | 1        |
| BOLT,SOCKET,5X16 (Ref # 92154)             | 92154-0182     | 1        |
| BOLT,SOCKET,8X14 (Ref # 92154A)            | 92154-1032     | 1        |
| BOLT,SOCKET,6X25 (Ref # 92154B)            | 92154-1142     | 1        |
| DAMPER (Ref # 92161)                       | 92161-1467     | 1        |
| DAMPER (Ref # 92161A)                      | 92161-1531     | 1        |
| SCREW,TAPPING,5X10 (Ref # 92172)           | 92172-0262     | 1        |