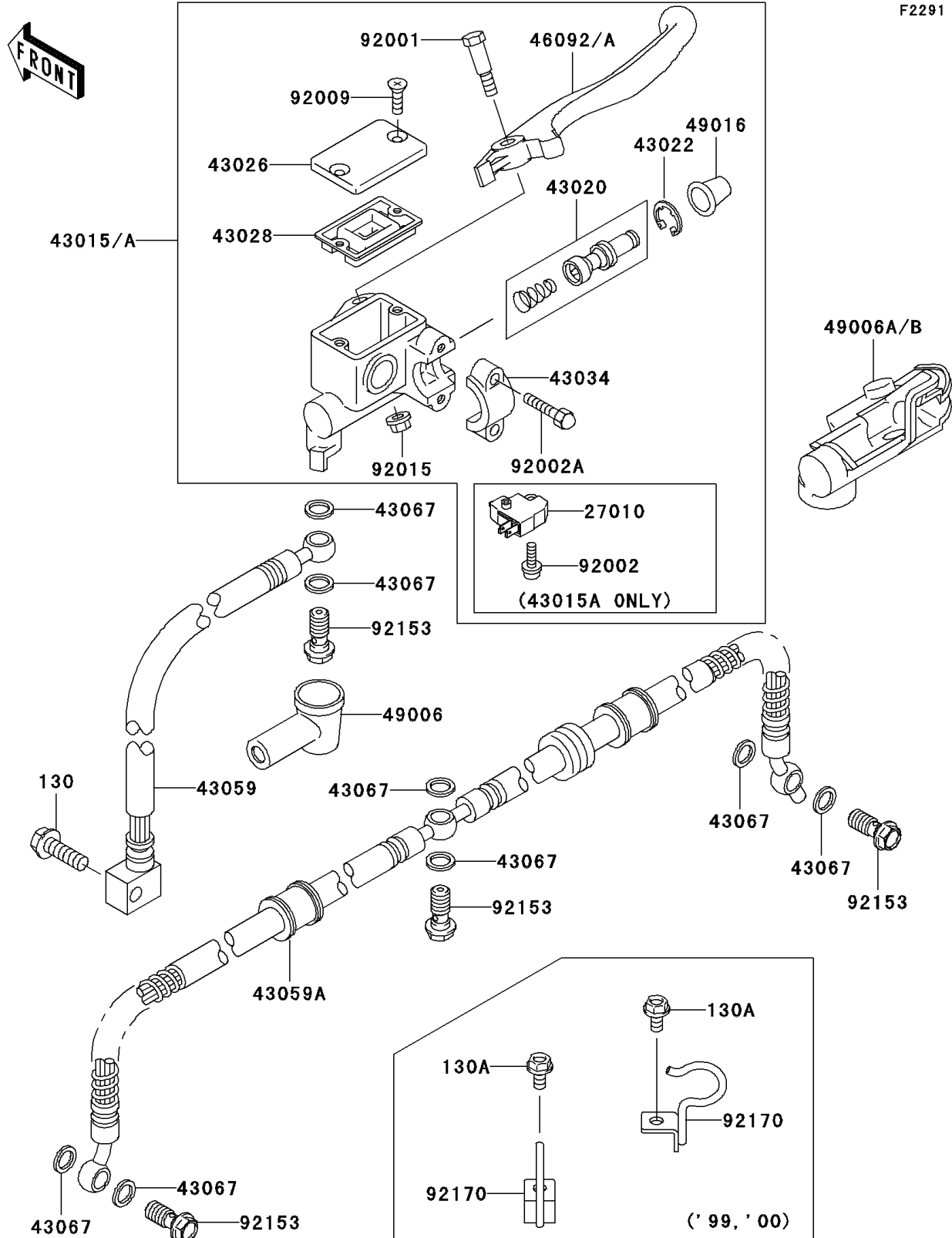


1999 Prairie® 300 PARTS DIAGRAM

Front Master Cylinder

F2291



1999 Prairie® 300 PARTS LIST

Front Master Cylinder

ITEM NAME	PART NUMBER	QUANTITY
BOLT-FLANGED,8X25 (Ref # 130)	130B0825	1
BOLT-FLANGED,6X12 (Ref # 130A)	130J0612	1
PISTON-COMP-BRAKE,FR (Ref # 43020)	43020-1056	1
STOPPER-BRAKE,PISTON (Ref # 43022)	43022-1010	1
CAP-BRAKE (Ref # 43026)	43026-1074	1
DIAPHRAGM (Ref # 43028)	43028-1061	1
HOLDER-BRAKE,MASTER CYLINDER (Ref # 43034)	43034-1016	1
HOSE-BRAKE,FR,UPP (Ref # 43059)	43059-1926	1
HOSE-BRAKE,FR,LWR (Ref # 43059A)	43059-1927	1
WASHER,10.5X15X1.5 (Ref # 43067)	43067-001	1
COVER-SEAL,MASTER CYLINDER (Ref # 49016)	49016-1044	1
BOLT,FRONT BRAKE LEVER (Ref # 92001)	92001-1728	1
BOLT (Ref # 92002A)	92002-1894	1
SCREW,4MM (Ref # 92009)	92009-1458	1
NUT,FLANGED,6MM,BLACK (Ref # 92015)	92015-1233	1
BOLT,OIL,L=23 (Ref # 92153)	92153-0627	1
CLAMP,HOSE (Ref # 92170)	92170-1720	1
SWITCH,BRAKE (Ref # 27010)	27010-0025	1
CYLINDER-ASSY-MASTER,FR (Ref # 43015)	43015-1489	1
CYLINDER-ASSY-MASTER,FR (Ref # 43015A)	43015-1646	1
LEVER-GRIP,FRONT BRAKE (Ref # 46092)	46092-1136	1
LEVER-GRIP,FRONT BRAKE (Ref # 46092A)	46092-1208	1
BOOT,DUST (Ref # 49006)	49006-1040	1
BOOT,RH (Ref # 49006A)	49006-1198	1
BOLT,SCREW,4X12 (Ref # 92002)	92002-1323	1