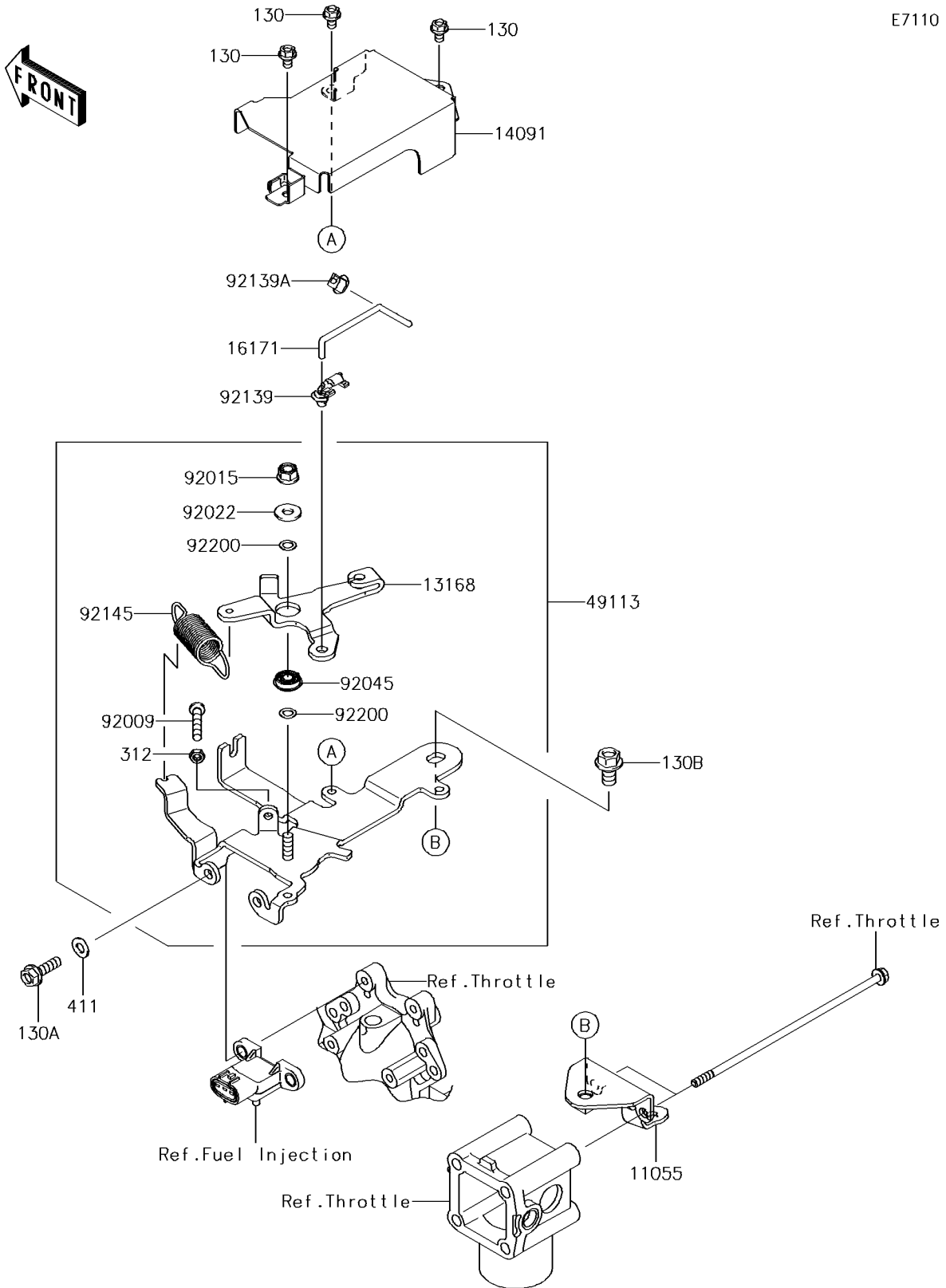


## 2016 Mule™ 4010 4x4 SE PARTS DIAGRAM

Control

E7110



## 2016 Mule™ 4010 4x4 SE PARTS LIST

Control

| ITEM NAME                               | PART NUMBER | QUANTITY |
|---|-------------|----------|
| BRACKET (Ref # 11055)                   | 11055-2020  | 1        |
| BOLT-FLANGED,5X8 (Ref # 130)            | 130BA0508   | 1        |
| BOLT-FLANGED,6X20 (Ref # 130A)          | 130BA0620   | 1        |
| BOLT-FLANGED,8X14 (Ref # 130B)          | 130BA0814   | 1        |
| LEVER (Ref # 13168)                     | 13168-2509  | 1        |
| COVER,CONTROL PANEL (Ref # 14091)       | 14091-1757  | 1        |
| LINK (Ref # 16171)                      | 16171-2105  | 1        |
| NUT-HEX,5MM (Ref # 312)                 | 312AA0500   | 1        |
| WASHER-PLAIN,6MM (Ref # 411)            | 411AB0600   | 1        |
| PANEL-COMP-CONTROL (Ref # 49113)        | 49113-2211  | 1        |
| SCREW,5X30 (Ref # 92009)                | 92009-2381  | 1        |
| NUT,LOCK,FLANGED,6MM (Ref # 92015)      | 92015-1339  | 1        |
| WASHER (Ref # 92022)                    | 92022-2247  | 1        |
| BEARING-BALL,696ZZ1NR MC3 (Ref # 92045) | 92045-2223  | 1        |
| BUSHING,CONT-PANEL (Ref # 92139)        | 92139-2060  | 1        |
| BUSHING,THROTTLE-BODY (Ref # 92139A)    | 92139-2061  | 1        |
| SPRING (Ref # 92145)                    | 92145-2186  | 1        |
| WASHER,6.2X10X0.5 (Ref # 92200)         | 92200-2083  | 1        |