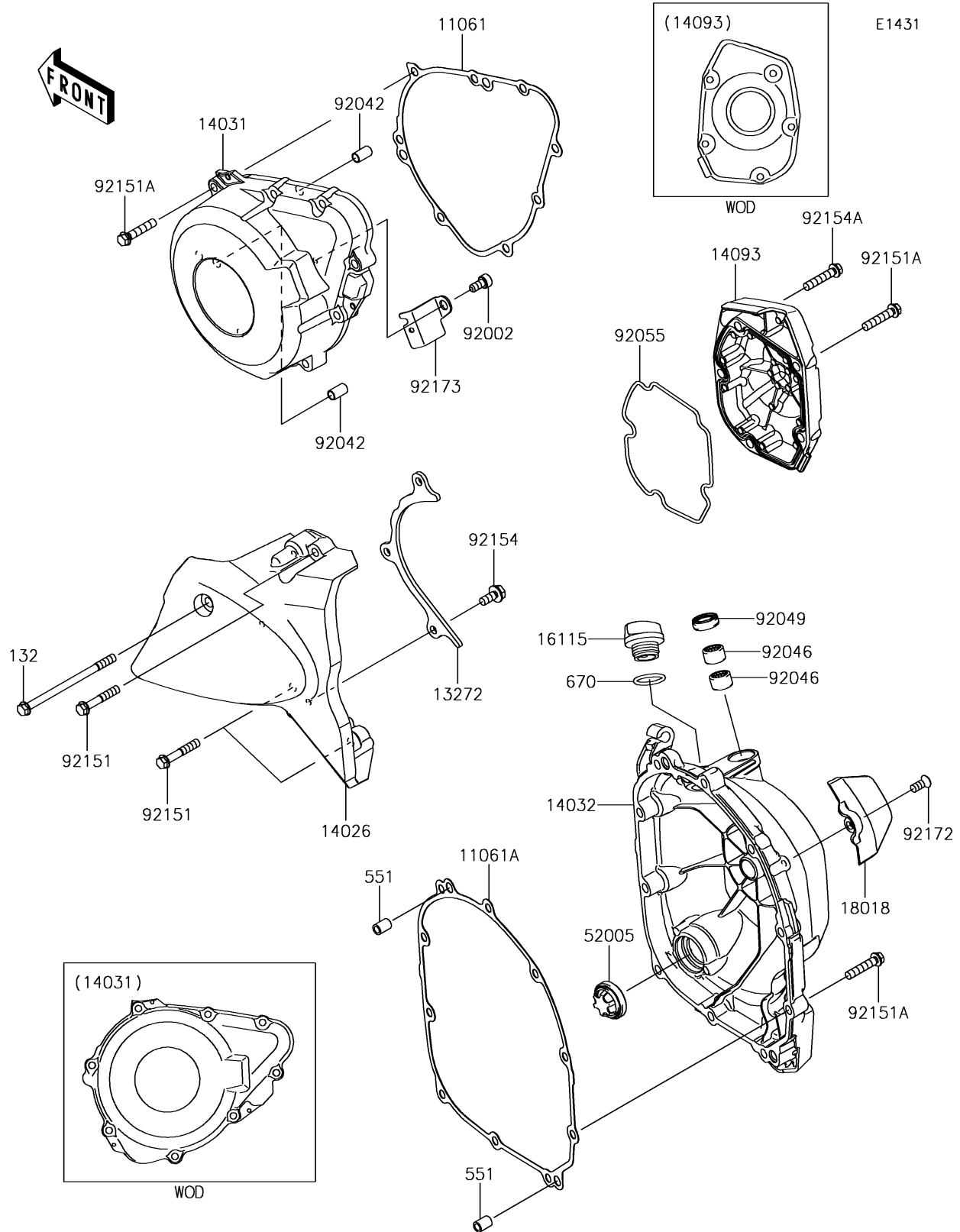


## 2018 Z900 RS PARTS DIAGRAM

Engine Cover(s)



## 2018 Z900 RS PARTS LIST

Engine Cover(s)

| ITEM NAME                             | PART NUMBER | QUANTITY |
|---------------------------------------|-------------|----------|
| GASKET,GENERATOR COVER (Ref # 11061)  | 11061-0403  | 1        |
| GASKET,CLUTCH COVER (Ref # 11061A)    | 11061-0404  | 1        |
| BOLT-FLANGED-SMALL,6X95 (Ref # 132)   | 132BC0695   | 1        |
| PLATE (Ref # 13272)                   | 13272-2349  | 1        |
| COVER-CHAIN (Ref # 14026)             | 14026-0138  | 1        |
| COVER-GENERATOR (Ref # 14031)         | 14031-0617  | 1        |
| COVER-CLUTCH (Ref # 14032)            | 14032-0640  | 1        |
| COVER,PULSER (Ref # 14093)            | 14093-0624  | 1        |
| CAP-OIL FILLER (Ref # 16115)          | 16115-1053  | 1        |
| PLATE-HEAT GUARD (Ref # 18018)        | 18018-0605  | 1        |
| GAUGE (Ref # 52005)                   | 52005-1120  | 1        |
| PIN-DOWEL,8X14 (Ref # 551)            | 551A0814    | 1        |
| O RING,20MM (Ref # 670)               | 670B2020    | 1        |
| BOLT,SOCKET,6X12 (Ref # 92002)        | 92002-1796  | 1        |
| PIN,DOWEL,6.3X8X14 (Ref # 92042)      | 92042-007   | 1        |
| BEARING-NEEDLE,HK1210FM (Ref # 92046) | 92046-0034  | 1        |
| SEAL-OIL,CLUTCH RELEASE (Ref # 92049) | 92049-1475  | 1        |
| RING-O,PULSER COVER (Ref # 92055)     | 92055-0199  | 1        |
| BOLT,6X35 (Ref # 92151)               | 92151-1135  | 1        |
| BOLT,6X30 (Ref # 92151A)              | 92151-1873  | 1        |
| BOLT,FLANGED,6X14 (Ref # 92154)       | 92154-0482  | 1        |
| BOLT,6X30 (Ref # 92154A)              | 92154-2652  | 1        |
| SCREW,TORX,6X14 (Ref # 92172)         | 92172-0901  | 1        |
| CLAMP (Ref # 92173)                   | 92173-1321  | 1        |