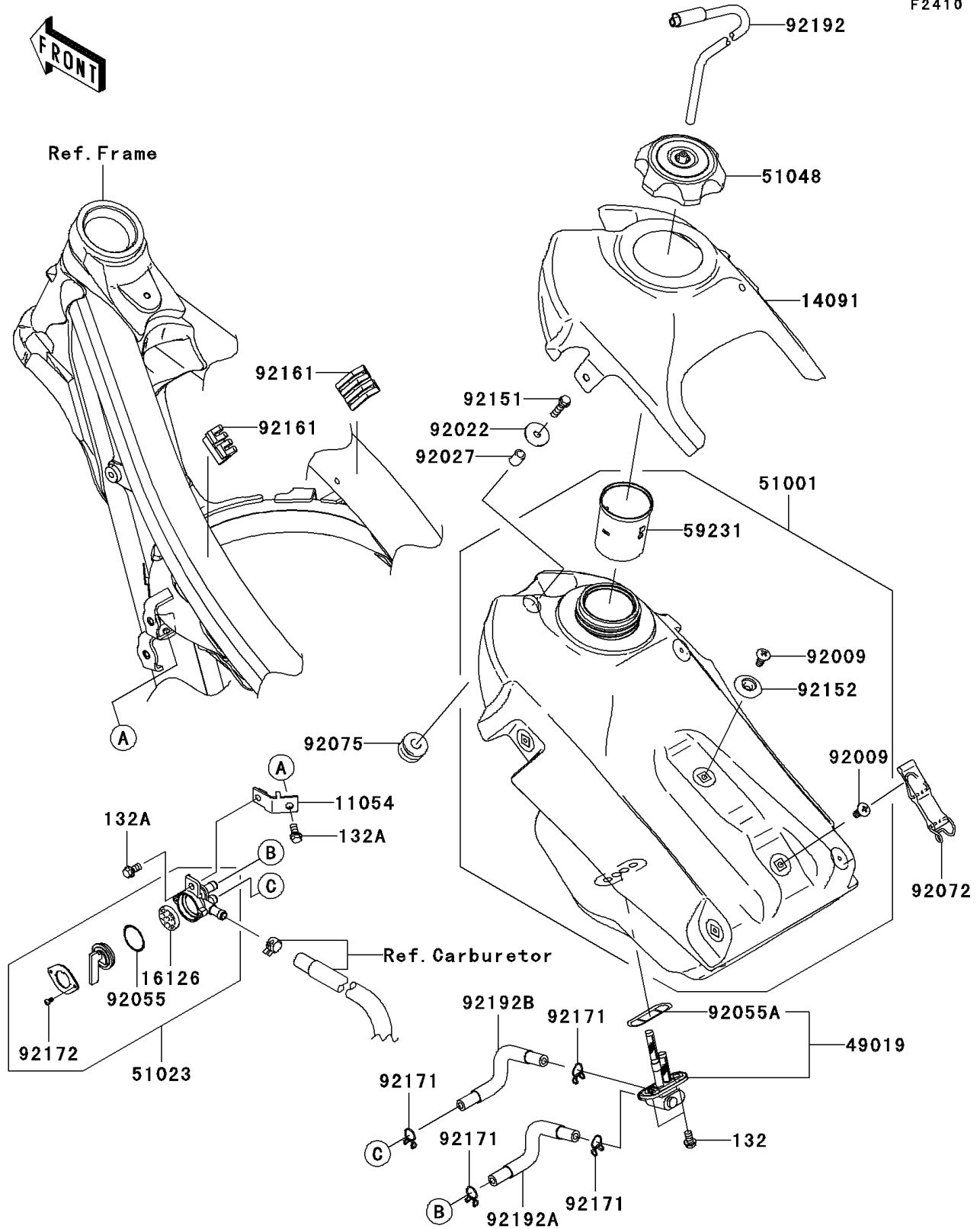


## 2010 PARTS DIAGRAM

Fuel Tank

F2410



## 2010 PARTS LIST

Fuel Tank

| ITEM NAME                              | PART NUMBER   | QUANTITY |
|--|---------------|----------|
| BOLT-FLANGED-SMALL,6X12 (Ref # 132)    | 132BB0612     | 1        |
| BOLT-FLANGED-SMALL,6X12 (Ref # 132A)   | 132BC0612     | 1        |
| BRACKET,FUEL TAP (Ref # 11054)         | 11054-1092    | 1        |
| COVER,FUEL TANK,F.BLACK (Ref # 14091)  | 14091-0843-6Z | 1        |
| VALVE (Ref # 16126)                    | 16126-0027    | 1        |
| FILTER-FUEL (Ref # 49019)              | 49019-0005    | 1        |
| TANK-COMP-FUEL,F.BLACK (Ref # 51001)   | 51001-0153-6Z | 1        |
| TAP-ASSY,FUEL (Ref # 51023)            | 51023-0026    | 1        |
| CAP-ASSY-TANK,FUEL (Ref # 51048)       | 51048-0009    | 1        |
| FILLER (Ref # 59231)                   | 59231-0019    | 1        |
| SCREW,6MM (Ref # 92009)                | 92009-1971    | 1        |
| WASHER,6.5X24X2 (Ref # 92022)          | 92022-1690    | 1        |
| COLLAR,6.8X10X14 (Ref # 92027)         | 92027-1966    | 1        |
| RING-O (Ref # 92055)                   | 92055-0111    | 1        |
| RING-O,FUEL TAP PACKING (Ref # 92055A) | 92055-1348    | 1        |
| BAND,FUEL TANK (Ref # 92072)           | 92072-0045    | 1        |
| DAMPER (Ref # 92075)                   | 92075-1787    | 1        |
| BOLT,FLANGED-SMALL,6X25 (Ref # 92151)  | 92151-1930    | 1        |
| COLLAR (Ref # 92152)                   | 92152-1346    | 1        |
| DAMPER,FUEL TANK,SIDE (Ref # 92161)    | 92161-0254    | 1        |
| CLAMP (Ref # 92171)                    | 92171-0149    | 1        |
| SCREW,3X6 (Ref # 92172)                | 92172-0259    | 1        |
| TUBE (Ref # 92192)                     | 92192-0161    | 1        |
| TUBE,ON (Ref # 92192A)                 | 92192-0409    | 1        |
| TUBE,RESERVE (Ref # 92192B)            | 92192-0503    | 1        |