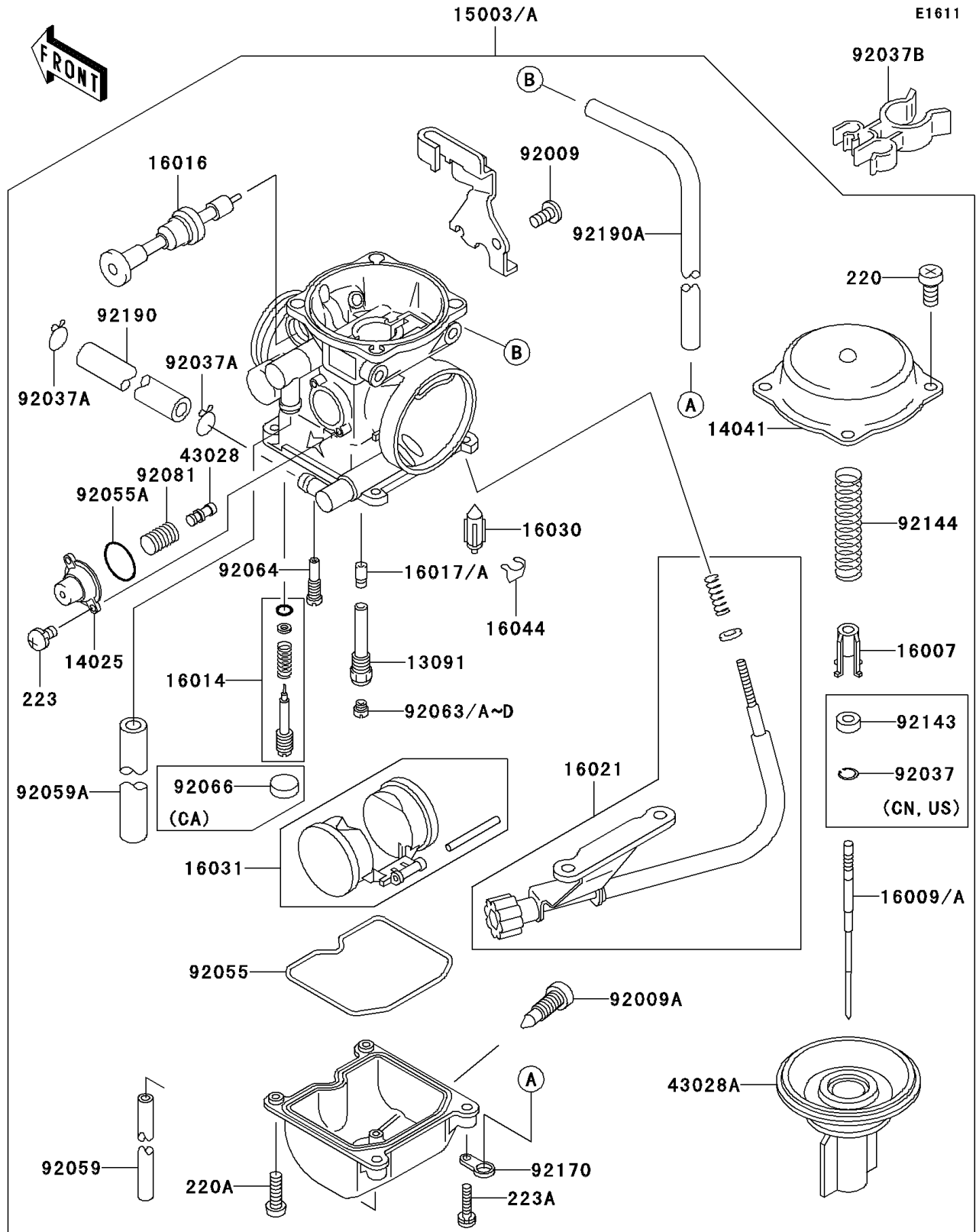


## 2002 KLX™300R PARTS DIAGRAM

Carburetor



## 2002 KLX™300R PARTS LIST

Carburetor

ITEM NAME	PART NUMBER	QUANTITY
HOLDER,NEEDLE JET (Ref # 13091)	13091-1985	1
COVER,AIR CUT VALVE (Ref # 14025)	14025-1903	1
COVER-COMP,MIXING,INSIDE (Ref # 14041)	14041-1061	1
SEAT-SPRING,VALVE (Ref # 16007)	16007-1117	1
SCREW-PILOT AIR (Ref # 16014)	16014-1081	1
PLUNGER,STARTER (Ref # 16016)	16016-1068	1
SCREW-THROTTLE STOP (Ref # 16021)	16021-1182	1
VALVE-FLOAT (Ref # 16030)	16030-1007	1
FLOAT (Ref # 16031)	16031-1077	1
CLAMP,FLOAT VALVE (Ref # 16044)	16044-007	1
DIAPHRAGM,5.9MM,AIR CUT VALVE (Ref # 43028)	43028-1053	1
DIAPHRAGM,VALVE (Ref # 43028A)	43028-1081	1
SCREW,5X10 (Ref # 92009)	92009-1365	1
SCREW,DRAIN,M6X0.75 (Ref # 92009A)	92009-1551	1
CLAMP,TUBE (Ref # 92037A)	92037-1531	1
CLAMP (Ref # 92037B)	92037-1886	1
RING-O,FLOAT CHAMBER (Ref # 92055)	92055-1222	1
RING-O (Ref # 92055A)	92055-1245	1
TUBE,3.5X6.5X330 (Ref # 92059)	92059-1110	1
TUBE,6.5X9.5X350 (Ref # 92059A)	92059-1237	1
JET-MAIN,#125 (Ref # 92063)	92063-1069	1
JET-MAIN,#122 (Ref # 92063A)	92063-1073	1
JET-MAIN,#128 (Ref # 92063B)	92063-1074	1
JET-MAIN,#130 (Ref # 92063C)	92063-1075	1
SCREW-PAN-CROS (Ref # 220)	220B0408	1
SCREW-PAN-CROS (Ref # 220A)	220D0414	1
SCREW-PAN-WS-CROS (Ref # 223)	223C0408	1
SCREW-PAN-WS-CROS (Ref # 223A)	223C0416	1
JET-MAIN,#132 (Ref # 92063D)	92063-1076	1

## 2002 KLX™300R PARTS LIST

Carburetor

ITEM NAME	PART NUMBER	QUANTITY
JET-PILOT,#35 (Ref # 92064)	92064-1101	1
SPRING,AIR CUT VALVE (Ref # 92081)	92081-1719	1
SPRING,VACUUM VALVE (Ref # 92144)	92144-1538	1
CLAMP,TUBE (Ref # 92170)	92170-1496	1
TUBE,6.5X11.5X100 (Ref # 92190)	92190-1474	1
TUBE,5X8X430 (Ref # 92190A)	92190-1560	1
CARBURETOR-ASSY (Ref # 15003)	15003-1260	1
CARBURETOR-ASSY (Ref # 15003A)	15003-1374	1
NEEDLE-JET,N1TC (Ref # 16009)	16009-1912	1
NEEDLE-JET,N5AF (Ref # 16009A)	16009-1996	1
JET-NEEDLE (Ref # 16017)	16017-1368	1
JET-NEEDLE (Ref # 16017A)	16017-1396	1
CLAMP,JET NEEDLE (Ref # 92037)	92037-1401	1
PLUG,PILOT AIR SCREW,6.9X2 (Ref # 92066)	92066-1051	1
COLLAR (Ref # 92143)	92143-1667	1