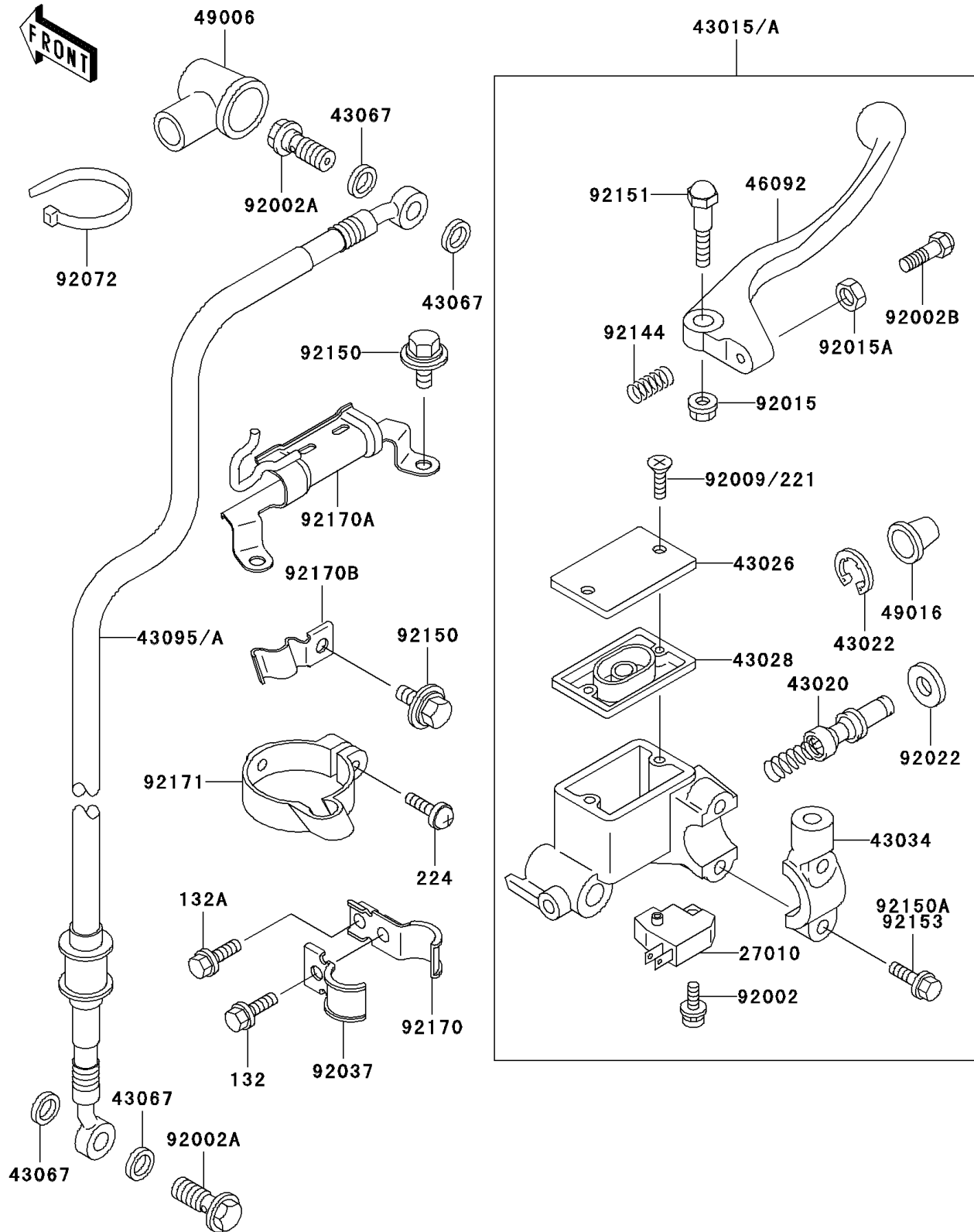


## 2000 Super Sherpa® PARTS DIAGRAM

Front Master Cylinder

F2291



## 2000 Super Sherpa® PARTS LIST

Front Master Cylinder

ITEM NAME	PART NUMBER	QUANTITY
BOLT-FLANGED-SMALL (Ref # 132)	132J0612	1
BOLT-FLANGED-SMALL (Ref # 132A)	132J0616	1
SCREW-PAN-WP-CROS,5X20 (Ref # 224)	224B0520	1
SWITCH,BRAKE (Ref # 27010)	27010-1170	1
CYLINDER-ASSY-MASTER,FR (Ref # 43015A)	43015-1598	1
PISTON-COMP-BRAKE (Ref # 43020)	43020-1065	1
STOPPER-BRAKE,PISTON (Ref # 43022)	43022-1010	1
CAP-BRAKE (Ref # 43026)	43026-1081	1
DIAPHRAGM (Ref # 43028)	43028-1061	1
HOLDER-BRAKE,MASTER CYLINDER (Ref # 43034)	43034-1144	1
WASHER,10.5X15X1.5 (Ref # 43067)	43067-001	1
HOSE-BRAKE,FR (Ref # 43095)	43095-1145	1
LEVER-GRIP,FRONT BRAKE (Ref # 46092)	46092-1199	1
BOOT,DUST (Ref # 49006)	49006-1040	1
COVER-SEAL,MASTER CYLINDER (Ref # 49016)	49016-1044	1
BOLT,SCREW,4X12 (Ref # 92002)	92002-1323	1
BOLT,OIL,L=23 (Ref # 92002A)	92002-1888	1
BOLT,ADJUST (Ref # 92002B)	92002-1893	1
SCREW (Ref # 92009)	92009-1795	1
NUT,FLANGED,6MM (Ref # 92015)	92015-1528	1
NUT,ADJUST (Ref # 92015A)	92015-1642	1
WASHER (Ref # 92022)	92022-1814	1
CLAMP,HOSE (Ref # 92037)	92037-1898	1
BAND,L=202 (Ref # 92072)	92072-1195	1
SPRING,RETURN (Ref # 92144)	92144-1103	1
BOLT,6X12 (Ref # 92150)	92150-1435	1
BOLT (Ref # 92150A)	92150-1452	1
BOLT,LEVER SET (Ref # 92151)	92151-1215	1
CLAMP,BRAKE HOSE (Ref # 92170)	92170-1749	1

## 2000 Super Sherpa® PARTS LIST

Front Master Cylinder

ITEM NAME	PART NUMBER	QUANTITY
CLAMP,BRAKE HOSE (Ref # 92170A)	92170-1778	1
CLAMP,BRAKE HOSE (Ref # 92170B)	92170-1781	1
CLAMP,BRAKE HOSE (Ref # 92171)	92171-1079	1