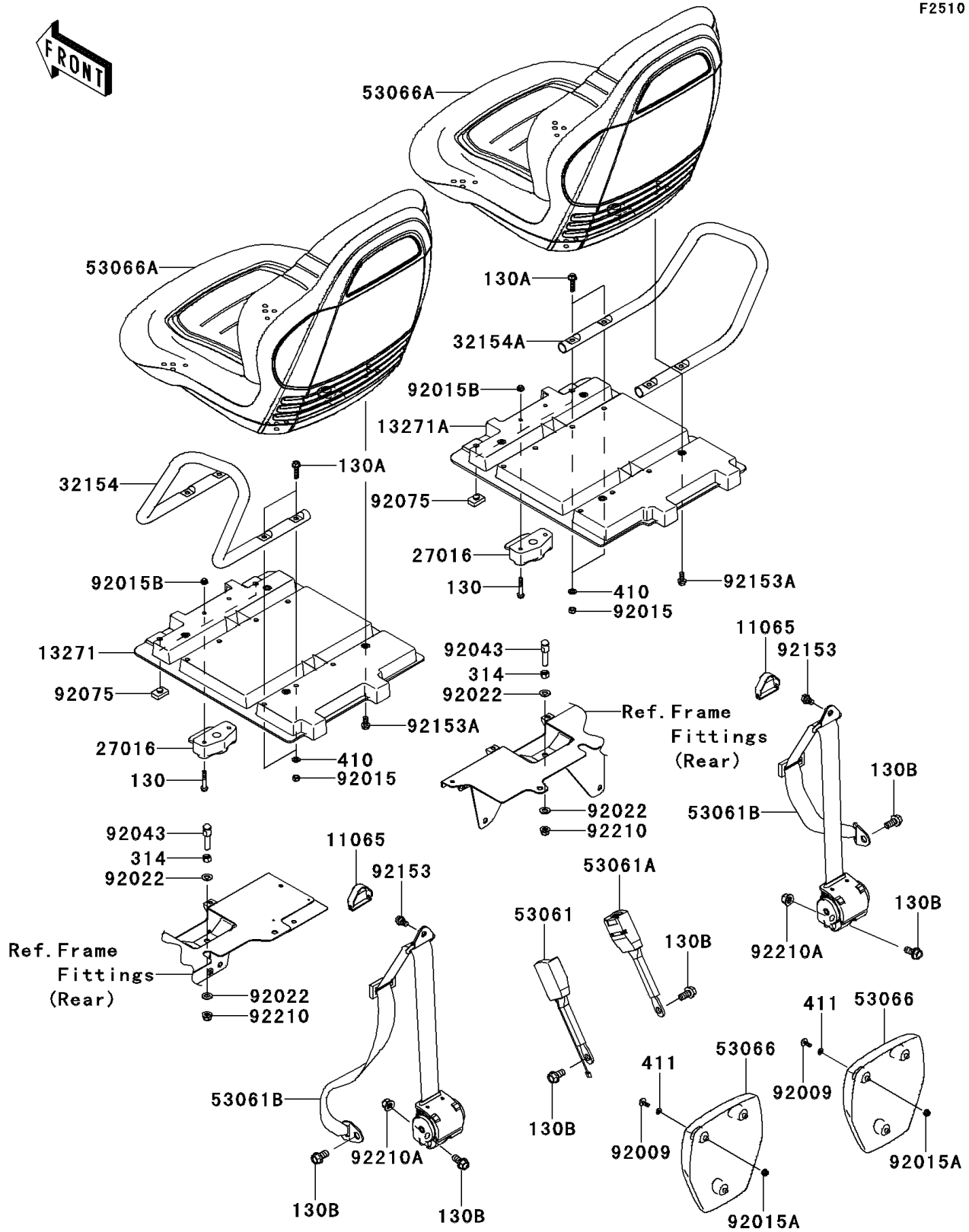


## 2013 Teryx® 750 FI 4x4 LE PARTS DIAGRAM

Seat

F2510



## 2013 Teryx® 750 FI 4x4 LE PARTS LIST

Seat

ITEM NAME	PART NUMBER	QUANTITY
BOLT-FLANGED,6X40 (Ref # 130)	130CA0640	1
BOLT-FLANGED,8X30 (Ref # 130A)	130CA0830	1
BOLT-FLANGED,12X25 (Ref # 130B)	130CA1225	1
NUT-HEX-FINE,10MM (Ref # 314)	314AA1000	1
WASHER-PLAIN-SMALL,8MM (Ref # 410)	410AA0800	1
WASHER-PLAIN,6.5X13X1 (Ref # 411)	411AB0600	1
CAP (Ref # 11065)	11065-0713	1
PLATE,SEAT,LWR,LH,F.BLACK (Ref # 13271)	13271-0894-6Z	1
PLATE,SEAT,LWR,RH,F.BLACK (Ref # 13271A)	13271-0895-6Z	1
LOCK-ASSY,SEAT (Ref # 27016)	27016-3758	1
PIPE,SEAT PLATE,LH (Ref # 32154)	32154-1249	1
PIPE,SEAT PLATE,RH (Ref # 32154A)	32154-1250	1
BELT-SEAT,BUCKLE (Ref # 53061)	53061-0319	1
BELT-SEAT,BUCKLE (Ref # 53061A)	53061-0320	1
BELT-SEAT,BUCKLE (Ref # 53061B)	53061-0322	1
SEAT-ASSY,PAD HEAD,BLACK (Ref # 53066)	53066-0163-6D	1
SEAT-ASSY (Ref # 53066A)	53066-0195	1
SCREW,6X16 (Ref # 92009)	92009-1621	1
NUT,LOCK,8MM (Ref # 92015)	92015-1124	1
NUT,LOCK,FLANGED,6MM (Ref # 92015A)	92015-1603	1
NUT,LOCK,FLANGED,6MM (Ref # 92015B)	92015-1699	1
WASHER,10.5X20X1.6 (Ref # 92022)	92022-1591	1
PIN (Ref # 92043)	92043-0126	1
DAMPER,SEAT (Ref # 92075)	92075-1153	1
BOLT,FLANGED,10X16 (Ref # 92153)	92153-1740	1
BOLT (Ref # 92153A)	92153-1924	1
NUT,LOCK,FLANGED,10MM (Ref # 92210)	92210-0276	1
NUT,12MM (Ref # 92210A)	92210-0603	1