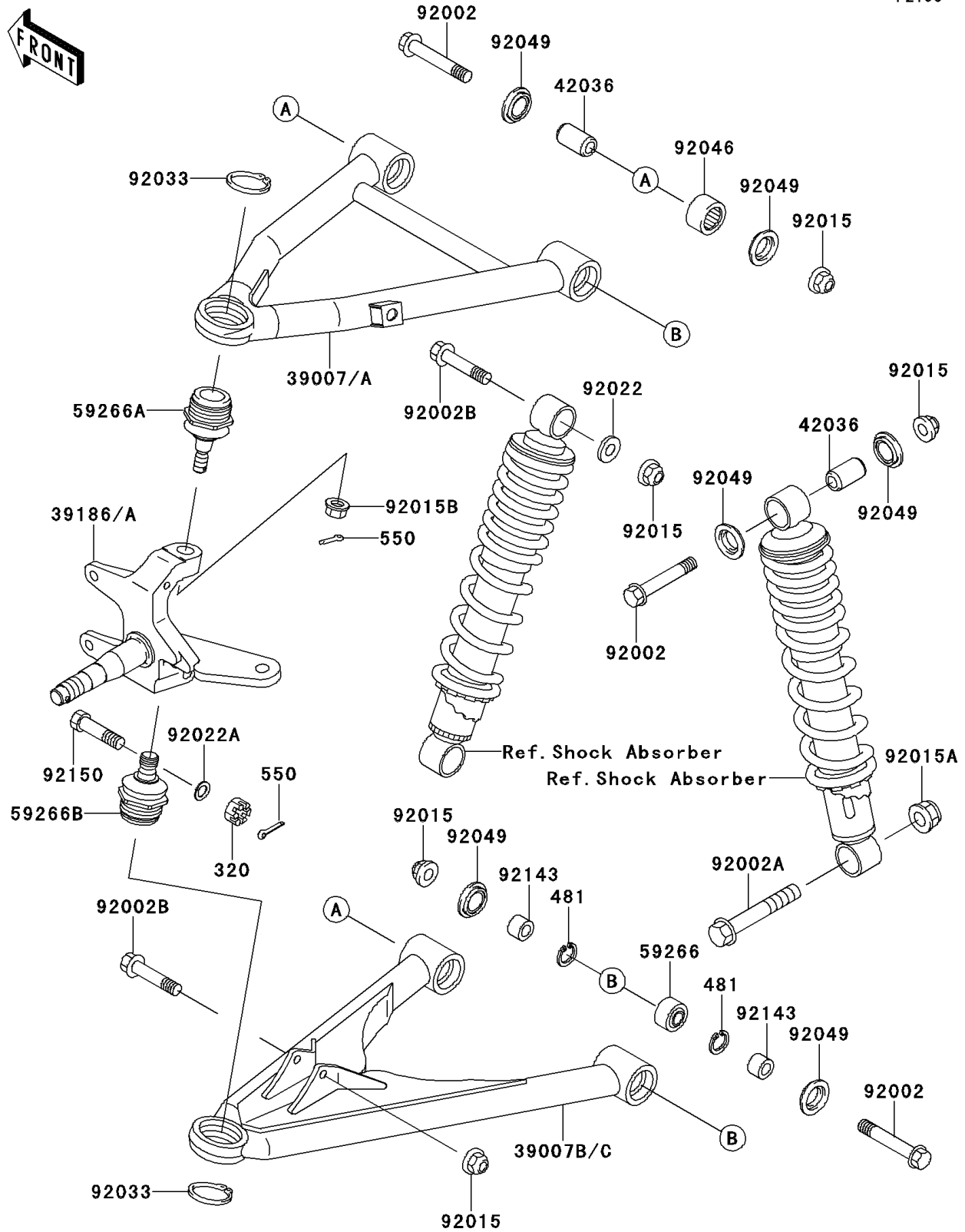


## 2000 Lakota™ 300 PARTS DIAGRAM

Suspension

F2150



## 2000 Lakota™ 300 PARTS LIST

### Suspension

ITEM NAME	PART NUMBER	QUANTITY
NUT-CASTLE (Ref # 320)	320H1000	1
CIRCLIP (Ref # 481)	481J2400	1
PIN-COTTER,2.0X15 (Ref # 550)	550D2015	1
ARM-SUSP,LH,UPP,SILVER NO.40 (Ref # 39007)	39007-1220-5A	1
ARM-SUSP,RH,UPP,SILVER NO.40 (Ref # 39007A)	39007-1221-5A	1
ARM-SUSP,FR,LH,LWR,SILVER (Ref # 39007B)	39007-1222-5A	1
ARM-SUSP,FR,RH,LWR,SILVER (Ref # 39007C)	39007-1223-5A	1
KNUCKLE,LH (Ref # 39186)	39186-1062	1
KNUCKLE,RH (Ref # 39186A)	39186-1064	1
SLEEVE,10X17X40 (Ref # 42036)	42036-1183	1
JOINT-BALL (Ref # 59266)	59266-1011	1
JOINT-BALL (Ref # 59266A)	59266-1075	1
JOINT-BALL (Ref # 59266B)	59266-1098	1
BOLT,FLANGED,10X61 (Ref # 92002)	92002-1738	1
BOLT,FLANGED,12X78 (Ref # 92002A)	92002-1739	1
BOLT,FLANGED,10X46 (Ref # 92002B)	92002-1740	1
NUT,LOCK,10MM (Ref # 92015)	92015-1597	1
NUT,FLANGED,LOCK,12MM (Ref # 92015A)	92015-1617	1
NUT,LOCK,FLANGED,10MM (Ref # 92015B)	92015-1717	1
WASHER,10X22X3.2 (Ref # 92022)	92022-176	1
WASHER,10.2X16X1 (Ref # 92022A)	92022-1829	1
RING-SNAP,30MM (Ref # 92033)	92033-1218	1
BEARING-NEEDLE (Ref # 92046)	92046-1046	1
SEAL-OIL,MHA17245.7F (Ref # 92049)	92049-1223	1
COLLAR,10X17X12 (Ref # 92143)	92143-1010	1
BOLT,10X44 (Ref # 92150)	92150-1226	1