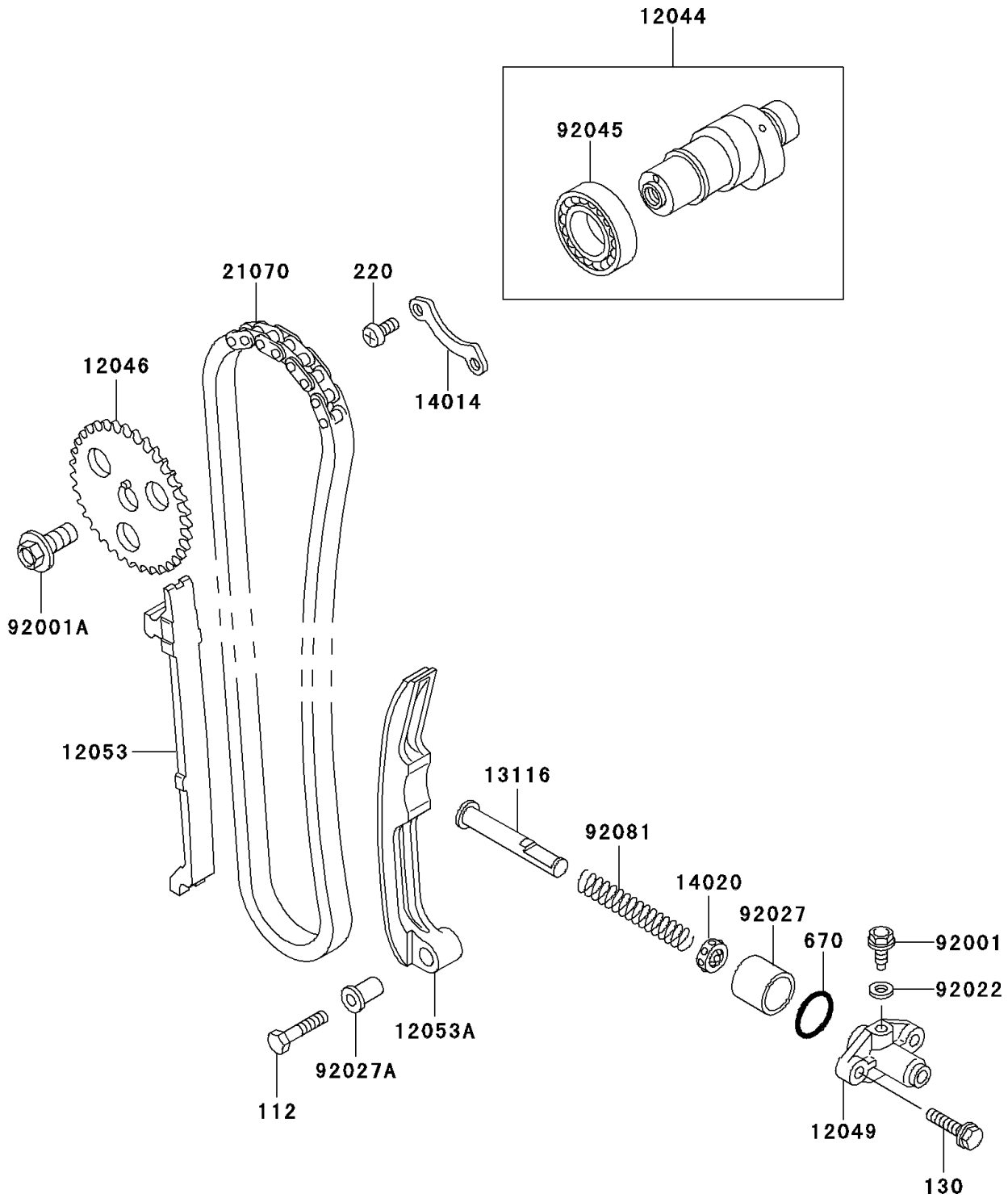


2000 Lakota™ 300 PARTS DIAGRAM

Camshaft(s)/Tensioner

E1230



2000 Lakota™ 300 PARTS LIST

Camshaft(s)/Tensioner

ITEM NAME	PART NUMBER	QUANTITY
BOLT-UPSET (Ref # 112)	112G0630	1
BOLT-FLANGED (Ref # 130)	130Y0625	1
SCREW-PAN-CROS,6X10 (Ref # 220)	220B0610	1
O RING,21MM (Ref # 670)	670B2021	1
CAMSHAFT-VALVE (Ref # 12044)	12044-1149	1
SPROCKET,CAM CHAIN,32T (Ref # 12046)	12046-1037	1
TENSIONER,CAM CHAIN (Ref # 12049)	12049-1055	1
GUIDE-CHAIN,CAM (Ref # 12053)	12053-1358	1
GUIDE-CHAIN,CAM (Ref # 12053A)	12053-1359	1
ROD-PUSH,TENSIONER (Ref # 13116)	13116-1019	1
PLATE-POSITION (Ref # 14014)	14014-1030	1
RETAINER,TENSIONER (Ref # 14020)	14020-1054	1
CHAIN,CAMSHAFT,BF05TX90L (Ref # 21070)	21070-013	1
BOLT,TENSIONER ADJUST (Ref # 92001)	92001-1155	1
BOLT,10X23 (Ref # 92001A)	92001-1859	1
WASHER,6.1X12X1 (Ref # 92022)	92022-077	1
COLLAR,TENSIONER (Ref # 92027)	92027-1273	1
COLLAR,L=17.6 (Ref # 92027A)	92027-155	1
BEARING-BALL,#6005C4 (Ref # 92045)	92045-1056	1
SPRING,TENSIONER (Ref # 92081)	92081-1105	1