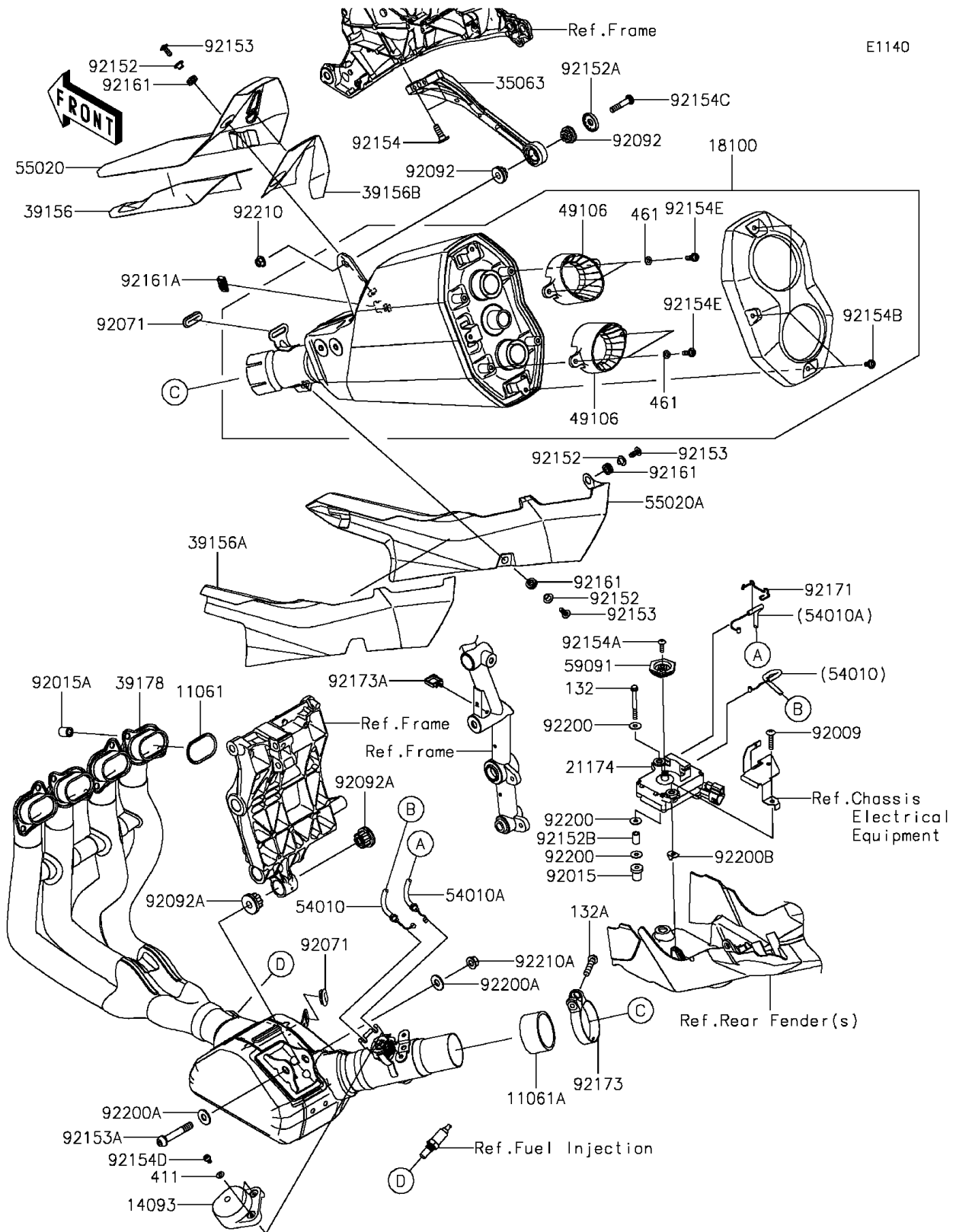


2015 PARTS DIAGRAM

Muffler(s)



2015 PARTS LIST

Muffler(s)

ITEM NAME	PART NUMBER	QUANTITY
GASKET,EXHAUST PIPE (Ref # 11061)	11061-0951	1
GASKET,MUFFLER JOINT (Ref # 11061A)	11061-0980	1
COVER (Ref # 14093)	14093-0161	1
BODY-ASSY-MUFFLER (Ref # 18100)	18100-0572	1
MOTOR-ELECTRIC (Ref # 21174)	21174-0009	1
STAY,MUFFLER BODY (Ref # 35063)	35063-0998	1
PAD,UPP,FR (Ref # 39156)	39156-1837	1
PAD,LWR (Ref # 39156A)	39156-1838	1
PAD,UPP,RR (Ref # 39156B)	39156-1892	1
MANIFOLD-COMP-EXHAUST (Ref # 39178)	39178-0234	1
COVER-MUFFLER,END PIPE (Ref # 49106)	49106-0787	1
CABLE,CLOSE (Ref # 54010)	54010-0603	1
CABLE,OPEN (Ref # 54010A)	54010-0604	1
GUARD,UPP (Ref # 55020)	55020-1917	1
GUARD,LWR (Ref # 55020A)	55020-1918	1
PULLEY (Ref # 59091)	59091-0007	1
SCREW,TAPPING,6X30 (Ref # 92009)	92009-1481	1
NUT,RUBBER,6MM (Ref # 92015)	92015-1692	1
NUT (Ref # 92015A)	92015-1923	1
GROMMET (Ref # 92071)	92071-0752	1
BUSHING-RUBBER (Ref # 92092)	92092-0018	1
BUSHING-RUBBER (Ref # 92092A)	92092-1081	1
COLLAR,6.3X8.3X16 (Ref # 92152)	92152-0286	1
COLLAR (Ref # 92152A)	92152-1943	1
COLLAR,6.8X10X16.9 (Ref # 92152B)	92152-1959	1
BOLT,SOCKET,6X16 (Ref # 92153)	92153-0817	1
BOLT,SOCKET,10X60 (Ref # 92153A)	92153-1837	1
BOLT,SOCKET,8X23 (Ref # 92154)	92154-0077	1
BOLT,TORX,5X18 (Ref # 92154A)	92154-0217	1

2015 PARTS LIST

Muffler(s)

ITEM NAME	PART NUMBER	QUANTITY
BOLT,SOCKET,6X14 (Ref # 92154B)	92154-1460	1
BOLT,SOCKET (Ref # 92154C)	92154-1545	1
BOLT,SOCKET,5X10 (Ref # 92154D)	92154-1558	1
BOLT,SOCKET,6X20 (Ref # 92154E)	92154-1667	1
DAMPER (Ref # 92161)	92161-0306	1
DAMPER (Ref # 92161A)	92161-1733	1
CLAMP (Ref # 92171)	92171-0292	1
CLAMP,64.5MM (Ref # 92173)	92173-0284	1
CLAMP (Ref # 92173A)	92173-1513	1
WASHER (Ref # 92200)	92200-0078	1
WASHER,10.5X25X2.0 (Ref # 92200A)	92200-1377	1
BOLT-FLANGED-SMALL,6X55 (Ref # 132)	132BA0655	1
BOLT-FLANGED-SMALL,8X40 (Ref # 132A)	132BC0840	1
WASHER-PLAIN,5MM (Ref # 411)	411S0500	1
WASHER-SPRING,6MM (Ref # 461)	461S0600	1
WASHER (Ref # 92200B)	92200-1746	1
NUT,8MM (Ref # 92210)	92210-0121	1
NUT,LOCK,FLANGED,10MM (Ref # 92210A)	92210-1139	1