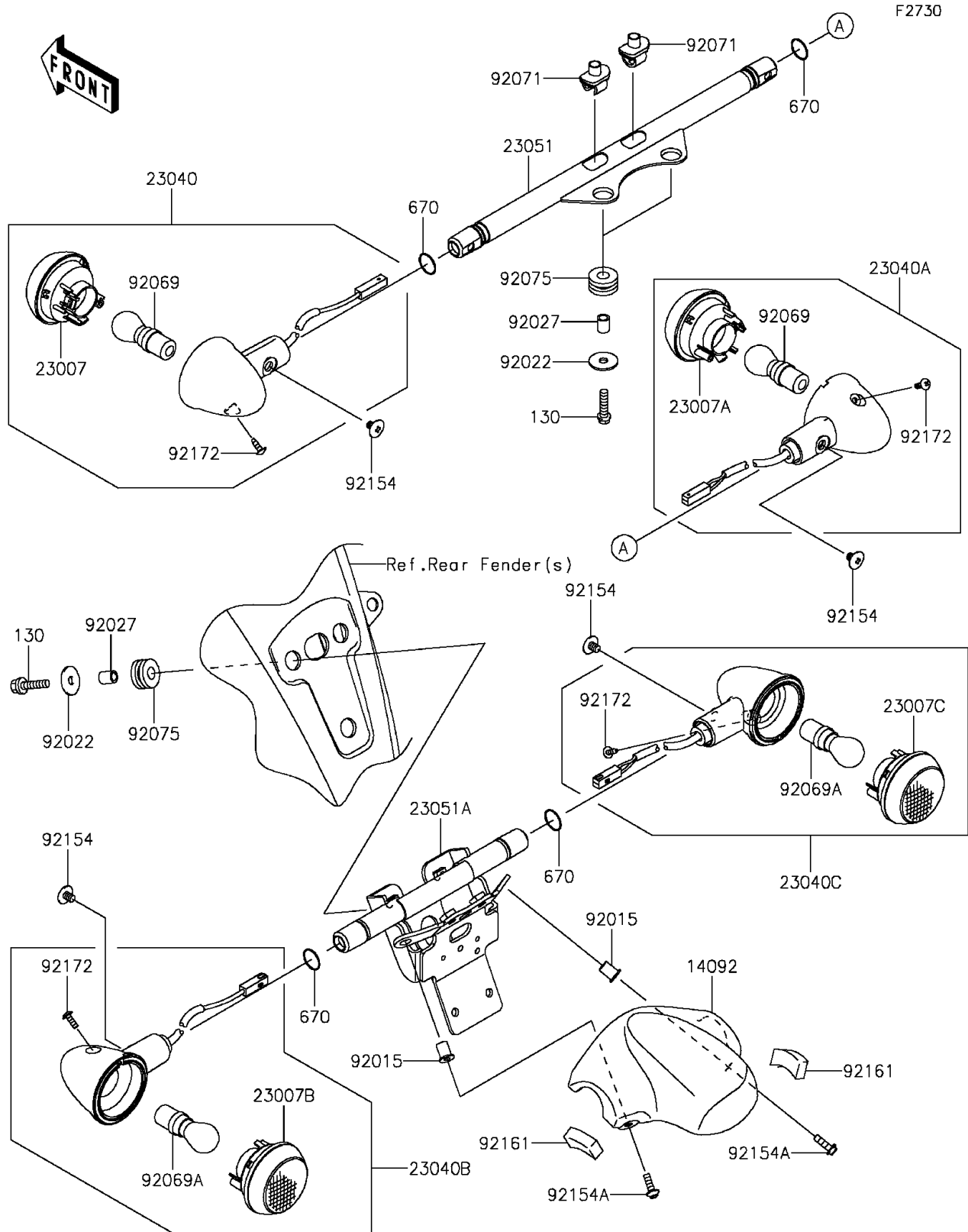


2012 PARTS DIAGRAM

Turn Signals



2012 PARTS LIST

Turn Signals

ITEM NAME	PART NUMBER	QUANTITY
BOLT-FLANGED,6X25 (Ref # 130)	130BB0625	1
O RING,16MM (Ref # 670)	670B2016	1
COVER,LICENSE LAMP (Ref # 14092)	14092-0090	1
LENS-COMP,SIGNAL LAMP (Ref # 23007)	23007-0120	1
LENS-COMP,SIGNAL LAMP (Ref # 23007A)	23007-0125	1
LENS-COMP,SIGNAL LAMP (Ref # 23007B)	23007-0126	1
LENS-COMP,SIGNAL LAMP (Ref # 23007C)	23007-0127	1
LAMP-SIGNAL,FR,LH (Ref # 23040)	23040-0083	1
LAMP-SIGNAL,FR,RH (Ref # 23040A)	23040-0084	1
LAMP-SIGNAL,RR,LH (Ref # 23040B)	23040-0089	1
LAMP-SIGNAL,RR,RH (Ref # 23040C)	23040-0090	1
BRACKET-SIGNAL LAMP,FR (Ref # 23051)	23051-0036	1
BRACKET-SIGNAL LAMP,RR (Ref # 23051A)	23051-0038	1
NUT,WELL,5MM (Ref # 92015)	92015-1757	1
WASHER,7X24X1.6 (Ref # 92022)	92022-1160	1
COLLAR,6.8X10X12 (Ref # 92027)	92027-162	1
BULB,12V 21/5W (Ref # 92069)	92069-063	1
BULB,12V 21W (Ref # 92069A)		1
GROMMET,SIGNAL LAMP (Ref # 92071)	92071-0043	1
DAMPER (Ref # 92075)	92075-1690	1
BOLT,6X8 (Ref # 92154)	92154-0097	1
BOLT,SOCKET,5X16 (Ref # 92154A)	92154-0209	1
DAMPER (Ref # 92161)	92161-0841	1
SCREW,TAPPING,4X12 (Ref # 92172)	92172-0389	1