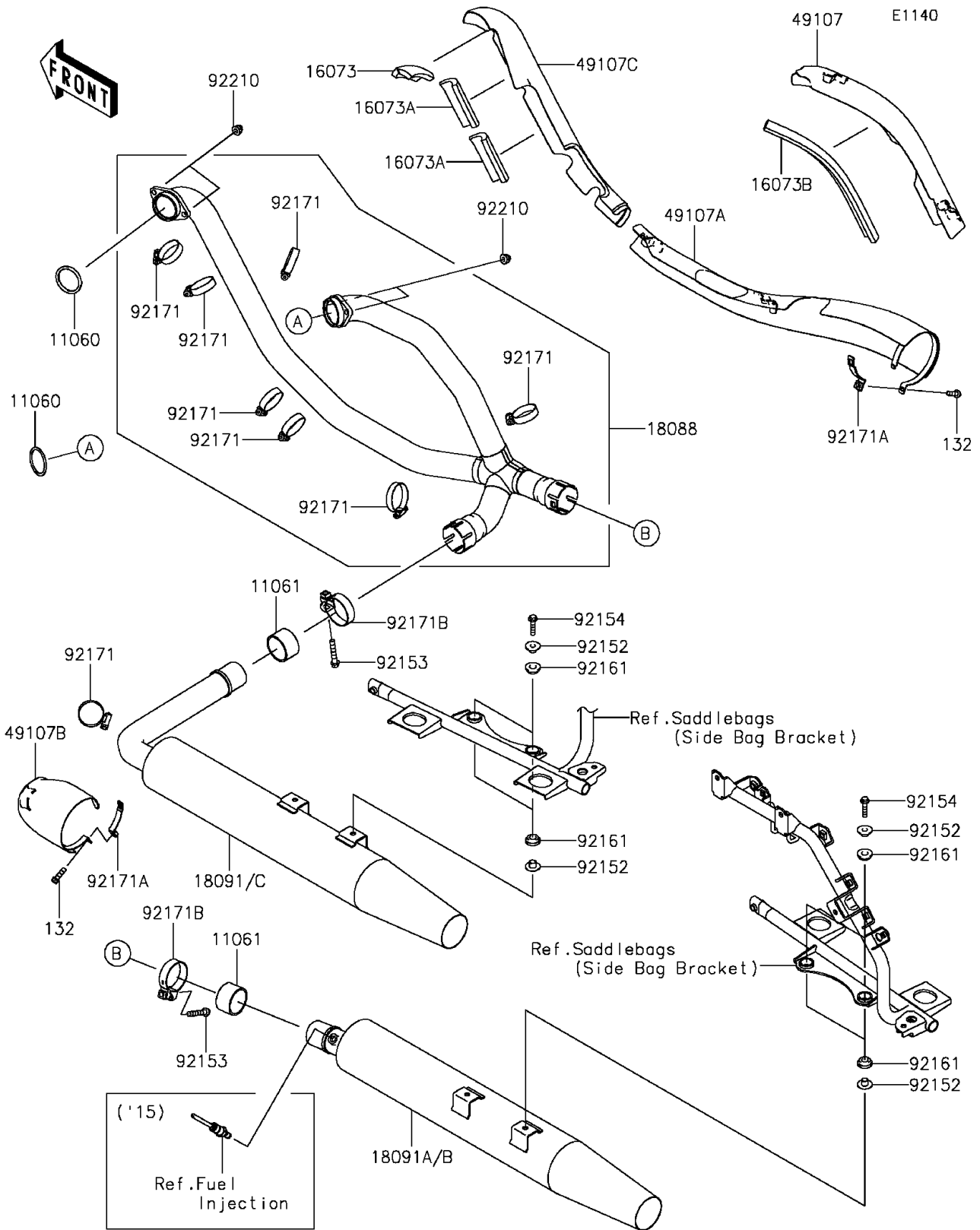


2012 PARTS DIAGRAM

Muffler(s)



2012 PARTS LIST

Muffler(s)

| ITEM NAME | PART NUMBER | QUANTITY |
|---|-------------|----------|
| BOLT-FLANGED-SMALL,6X20 (Ref # 132) | 132BC0620 | 1 |
| GASKET,EXHAUST PIPE (Ref # 11060) | 11060-1119 | 1 |
| GASKET,MUFFLER CONNECTING (Ref # 11061) | 11061-0240 | 1 |
| INSULATOR (Ref # 16073) | 16073-0125 | 1 |
| INSULATOR (Ref # 16073A) | 16073-0126 | 1 |
| INSULATOR (Ref # 16073B) | 16073-0128 | 1 |
| PIPE-EXHAUST (Ref # 18088) | 18088-0414 | 1 |
| BODY-COMP-MUFFLER,LH (Ref # 18091) | 18091-0833 | 1 |
| BODY-COMP-MUFFLER,RH (Ref # 18091A) | 18091-0834 | 1 |
| COVER-EXHAUST PIPE,RR (Ref # 49107) | 49107-0167 | 1 |
| COVER-EXHAUST PIPE,FR-R (Ref # 49107A) | 49107-0168 | 1 |
| COVER-EXHAUST PIPE,LH (Ref # 49107B) | 49107-0169 | 1 |
| COVER-EXHAUST PIPE,FR-F (Ref # 49107C) | 49107-0172 | 1 |
| COLLAR,8.8X12X10.6 (Ref # 92152) | 92152-0082 | 1 |
| BOLT,8X45 (Ref # 92153) | 92153-0702 | 1 |
| BOLT,FLANGED,8X32 (Ref # 92154) | 92154-0136 | 1 |
| DAMPER (Ref # 92161) | 92161-0135 | 1 |
| CLAMP (Ref # 92171) | 92171-0072 | 1 |
| CLAMP (Ref # 92171A) | 92171-0294 | 1 |
| CLAMP (Ref # 92171B) | 92171-0358 | 1 |
| NUT,CAP,8MM (Ref # 92210) | 92210-1132 | 1 |