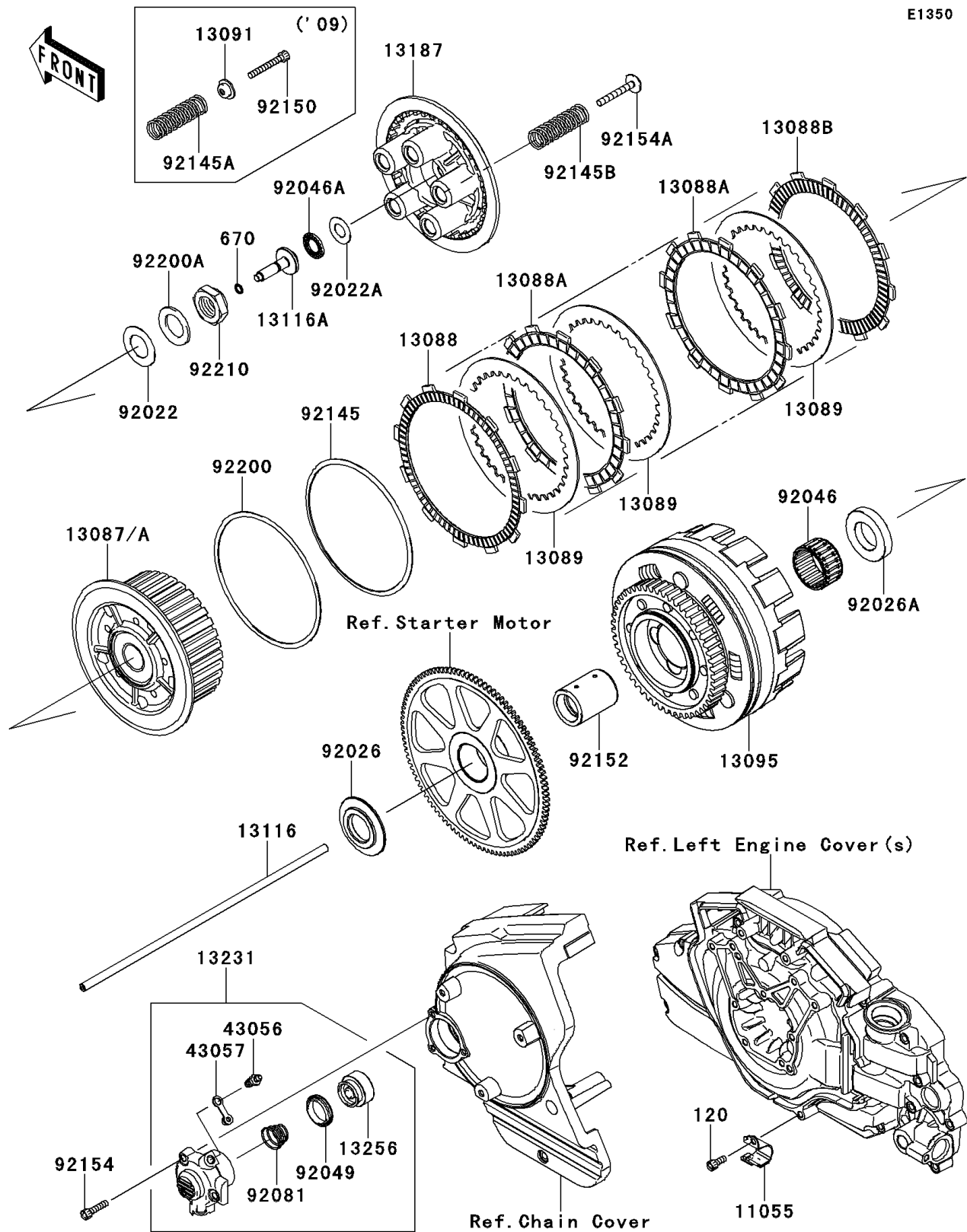


2009 PARTS DIAGRAM

Clutch

E1350



2009 PARTS LIST

Clutch

| ITEM NAME | PART NUMBER | QUANTITY |
|--|-------------|----------|
| BOLT-SOCKET,6X14 (Ref # 120) | 120CC0614 | 1 |
| O RING,7MM (Ref # 670) | 670D1507 | 1 |
| BRACKET (Ref # 11055) | 11055-0528 | 1 |
| HUB-CLUTCH (Ref # 13087) | 13087-0005 | 1 |
| PLATE-FRICTION (Ref # 13088) | 13088-0001 | 1 |
| PLATE-FRICTION (Ref # 13088A) | 13088-0011 | 1 |
| PLATE-FRICTION (Ref # 13088B) | 13088-1146 | 1 |
| PLATE-CLUTCH,T=2.0 (Ref # 13089) | 13089-1075 | 1 |
| HOLDER,CLUTCH SPRING (Ref # 13091) | 13091-1041 | 1 |
| HOUSING-COMP-CLUTCH (Ref # 13095) | 13095-0111 | 1 |
| ROD-PUSH (Ref # 13116) | 13116-0027 | 1 |
| ROD-PUSH (Ref # 13116A) | 13116-0033 | 1 |
| PLATE-CLUTCH OPERATING (Ref # 13187) | 13187-0002 | 1 |
| RELEASE-ASSY-CLUTCH (Ref # 13231) | 13231-0003 | 1 |
| PISTON (Ref # 13256) | 13256-1052 | 1 |
| BREATHER (Ref # 43056) | 43056-1055 | 1 |
| CAP-BREATHER (Ref # 43057) | 43057-1001 | 1 |
| WASHER,25.3X44X1 (Ref # 92022) | 92022-1390 | 1 |
| WASHER,15.1X29X1.0 (Ref # 92022A) | 92022-1463 | 1 |
| SPACER (Ref # 92026) | 92026-0124 | 1 |
| SPACER (Ref # 92026A) | 92026-0136 | 1 |
| BEARING-NEEDLE,K40X48X25V3 (Ref # 92046) | 92046-0001 | 1 |
| BEARING-NEEDLE,AXK1102 (Ref # 92046A) | 92046-1052 | 1 |
| SEAL-OIL,PISTON (Ref # 92049) | 92049-1165 | 1 |
| SPRING,CLUTCH RELEASE (Ref # 92081) | 92081-1644 | 1 |
| SPRING (Ref # 92145) | 92145-0033 | 1 |
| SPRING (Ref # 92145A) | 92145-0593 | 1 |
| BOLT,CLUTCH OPERATING (Ref # 92150) | 92150-1855 | 1 |
| COLLAR,30X40X52.3 (Ref # 92152) | 92152-0190 | 1 |

2009 PARTS LIST

Clutch

| ITEM NAME | PART NUMBER | QUANTITY |
|-------------------------------------|-------------|----------|
| BOLT, SOCKET, 6X25 (Ref # 92154) | 92154-0085 | 1 |
| WASHER, 140.1X150X1.2 (Ref # 92200) | 92200-0015 | 1 |
| WASHER, 25.5X42X2.6 (Ref # 92200A) | 92200-0016 | 1 |
| NUT, 25MM (Ref # 92210) | 92210-0138 | 1 |