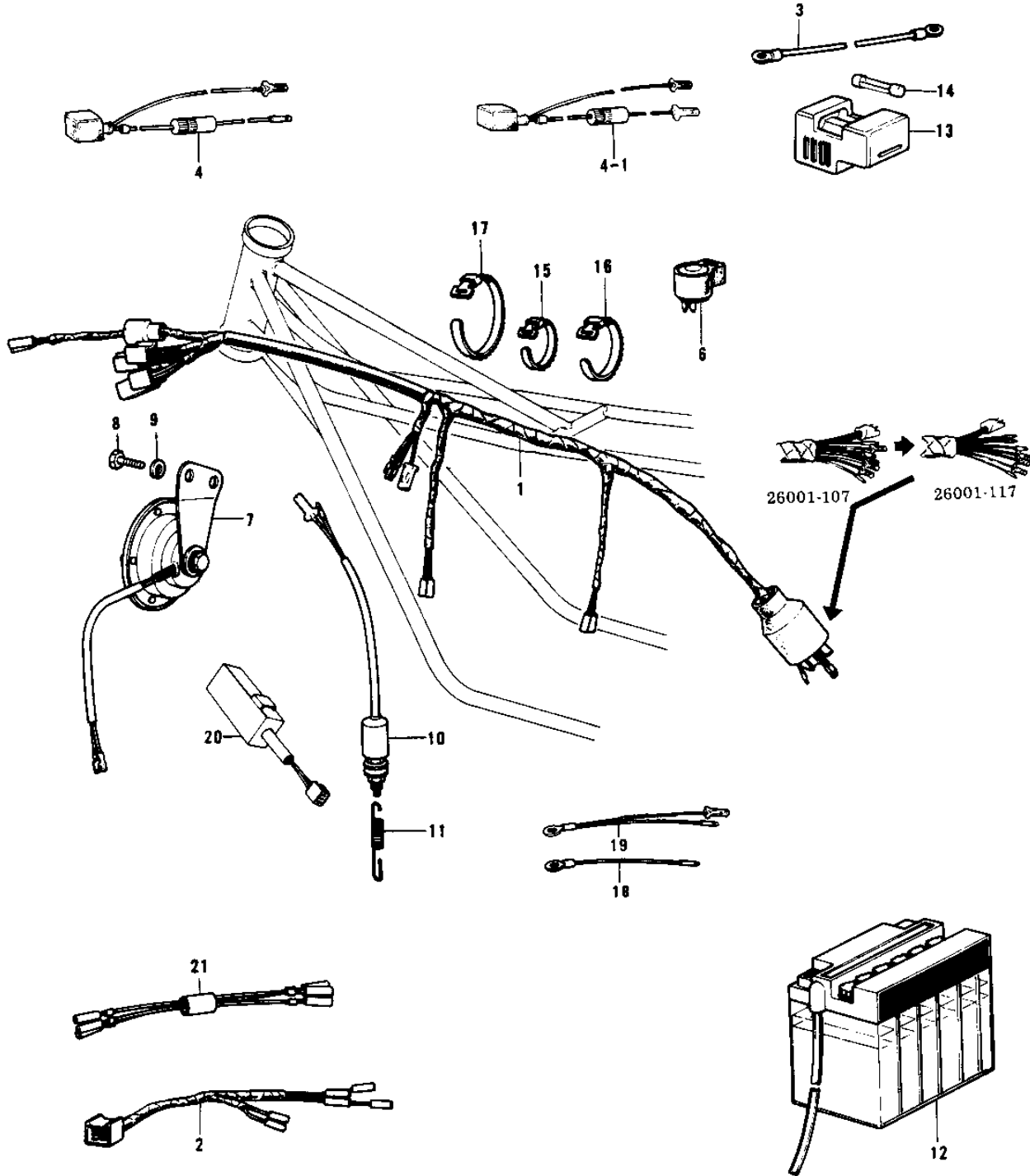


1969 PARTS DIAGRAM

CHASSIS ELECTRICAL EQUIPMENT (H1-D/E/F)

Re



1045-2

(H1-D/A)

1969 PARTS LIST

CHASSIS ELECTRICAL EQUIPMENT (H1-D/E/F)

ITEM NAME	PART NUMBER	QUANTITY
WIRING HARNESS,MAIN (Ref # 1)	26001-095	1
WIRING HARNESS,MAIN (Ref # 1)	26001-107	1
WIRING HARNESS,MAIN (Ref # 1)	26001-117	1
WIRING HARNESS,REAR (Ref # 2)	26002-039	1
WIRE-GROUND LEAD (Ref # 3)	26010-023	1
FUSE ASSY (Ref # 4)	26004-016	1
FUSE ASSY (Ref # 4-1)	26004-023	1
FUSE-20A (Ref # 5)	26006-005	2
RELAY-TURN SIGNAL (Ref # 6)	27002-011	1
HORN (Ref # 7)	27003-043	1
HORN (Ref # 7)	27003-047	1
BOLT,8X20 (Ref # 8)	115G0820	1
BOLT-SMALL-UPSET,8X16 (Ref # 8)	115G0816	1
WASHER SPRING 8MM (Ref # 9)	461F0800	1
SWITCH-BRAKE LAMP (Ref # 10)	27010-020	1
SWITCH,BRAKE LIGHT (Ref # 10)	27010-025	1
SPRING-BRAKE LAMP SW (Ref # 11)	27011-013	1
SPRING,BRAKE LAMP SN (Ref # 11)	27011-017	1
YUA BAT 12N9-3B (Ref # 12)	26012-039	1
HOLDER,SPARE FUSE (Ref # 13)	26016-003	1
BAND,SHORT (Ref # 15)	92072-030	1
BAND,MIDDLE (Ref # 16)	92072-031	1
BAND,WIRING HARNESS (Ref # 17)	92072-056	1
WIRE,LEAD (Ref # 18)	26011-080	1
WIRE,LEAD (Ref # 19)	26011-079	1
SWITCH,OUTAGE,INDICTR (Ref # 20)	28019-001	1
WIRE,IGNITION SW LEAD (Ref # 21)	26011-067	1