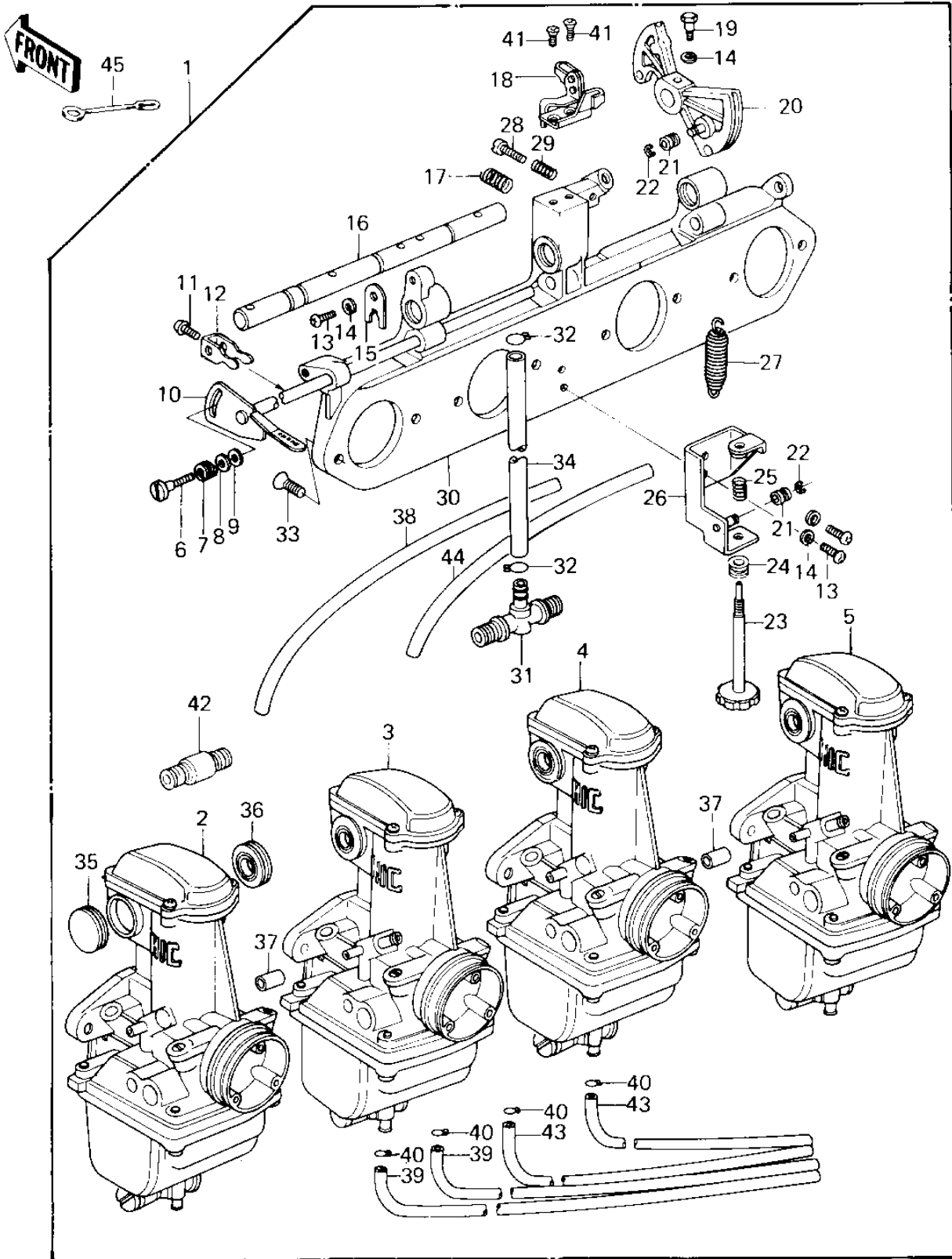


1980 Z1R PARTS DIAGRAM

CARBURETOR ASSY (CANADA) ('80 D3)



1980 Z1R PARTS LIST

CARBURETOR ASSY (CANADA) ('80 D3)

ITEM NAME	PART NUMBER	QUANTITY
CARBURETOR ASSY (Ref # 1)	16001-1126	1
CARBURETOR,LH,OUTSID (Ref # 2)	16001-1169	1
CARBURETOR,L.H,INSID (Ref # 3)	16001-1170	1
CARBURETOR,R.H INSID (Ref # 4)	16001-1171	1
CARBURETOR,RH,OUTSID (Ref # 5)	16001-1172	1
SCREW (Ref # 6)	16046-005	1
SPRING,F (Ref # 7)	16040-009	1
WASHER,PLAIN (Ref # 8)	16039-020	1
WASHER PLAIN 5MM (Ref # 8)	410B0500	1
WASHER,PLAIN (Ref # 9)	16039-019	1
SHAFT,STARTER PLUNGE (Ref # 10)	16041-021	1
SCREW,PAN HEAD,5X7 (Ref # 11)	16046-007	1
LEVER,STARTER PLUNGE (Ref # 12)	13168-1026	1
SCREW-PAN-CROS (Ref # 13)	220B0514	1
WASHER SPRING 5MM (Ref # 14)	461F0500	1
PLATE,SHAFT STOPPER (Ref # 15)	16055-012	1
SHAFT,CARB CONNECTIO (Ref # 16)	16041-017	1
SPRING,CABLE PULLY (Ref # 17)	16040-022	1
BRACKET,THROTTLE CAB (Ref # 18)	16077-017	1
BOLT,HEX HEAD,5X14 (Ref # 19)	16067-006	1
PULLY,THROTTLE CABLE (Ref # 20)	13168-1024	1
RING (Ref # 21)	16073-016	1
CIRCLIP 3MM (Ref # 22)	482K3000	1
SCREW,THROTTLE STOP (Ref # 23)	16021-1006	1
BUSHING (Ref # 24)	92028-1071	1
SPRING,THROTTLE STOP (Ref # 25)	16022-017	1
BRACKET,THROTTLE CAB (Ref # 26)	11034-1185	1
SPRING,THROTTLE PULL (Ref # 27)	92081-1028	1
SCREW,ADJUSTER (Ref # 28)	16021-1011	1

1980 Z1R PARTS LIST

CARBURETOR ASSY (CANADA) ('80 D3)

ITEM NAME	PART NUMBER	QUANTITY
SPRING,THROTTLE ADJS (Ref # 29)	16022-010	1
HOLDER,CARB MOUNTING (Ref # 30)	16065-1009	1
FITTING (Ref # 31)	92005-1010	1
CLAMP,HOSE (Ref # 32)	92037-1184	1
SCREW,6X14 (Ref # 33)	16033-029	1
SCREW CNTSNK HD 6X14 (Ref # 33)	221B0614	1
TUBE,7.5X12.5X225 (Ref # 34)	92059-1123	1
CAP,RUBBER (Ref # 35)	16039-042	1
GROMMET,CARBURETOR (Ref # 36)	92071-104	1
HOSE,6X11.5X16 (Ref # 37)	92059-141	1
HOSE,AIR VENT,5X8X55 (Ref # 38)	92059-1028	2
HOSE,FUEL OVERFLOW (Ref # 39)	92059-147	2
CLAMP,CARBURETOR HLD (Ref # 40)	92037-178	1
SCREW CNTSNK HD 5X10 (Ref # 41)	221B0510A	1
FITTING (Ref # 42)	92005-1009	1
CLAMP,OVER FLOW PIPE (Ref # 45)	92037-134	1