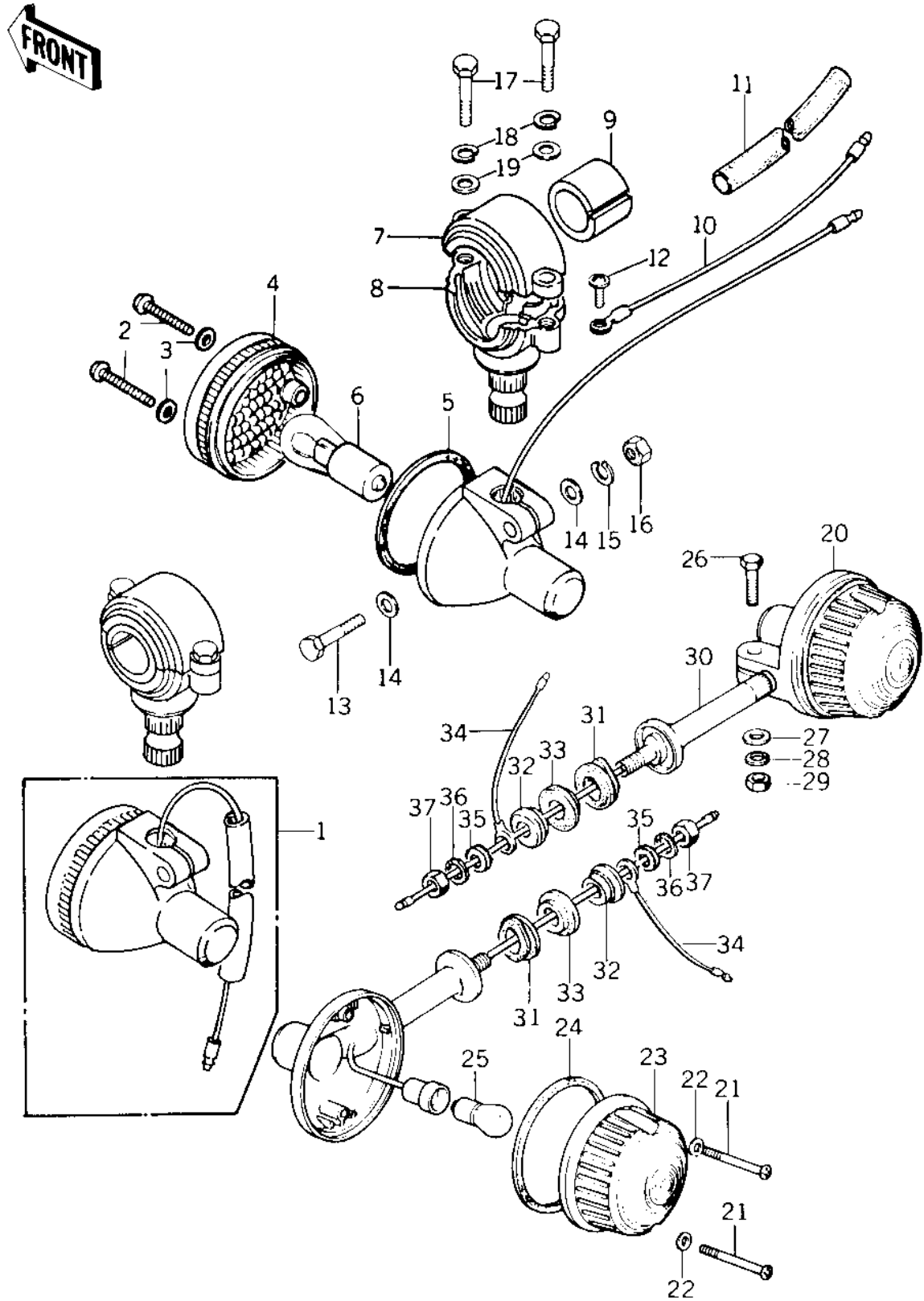


1976 900 LTD PARTS DIAGRAM

TURN SIGNALS



1976 900 LTD PARTS LIST

TURN SIGNALS

ITEM NAME	PART NUMBER	QUANTITY
LAMP,TURN SIGNAL (Ref # 1)	23040-054	1
SCREW-PAN HEAD,4X20 (Ref # 2)	220E0420A	1
WASHER-PLAIN,4MM (Ref # 3)	23058-002	2
LENS,TURN SIGNAL LAM (Ref # 4)	23048-1001	1
GASKET-SIG LAMP LENS (Ref # 5)	23050-003	1
BULB 12V 32CP (Ref # 6)	92069-055	2
BRACKET,SIGNAL LAMP (Ref # 7)	23051-1013	1
BRACKET,FRNT TURN SI (Ref # 8)	23051-1004	1
DAMPER RUBBER (Ref # 9)	23066-003	1
WIRE-TURN SIGNAL LEA (Ref # 10)	26011-061	1
COVER-WIRING HARNESS (Ref # 11)	26009-004	1
SCREW PAN HEAD 3X5 (Ref # 12)	220B0305A	1
BOLT-UPSET (Ref # 13)	112G0630	2
WASHER PLAIN 6MM (Ref # 14)	411B0600	2
WASHER SPRING 6MM (Ref # 15)	461F0600	2
NUT 6MM (Ref # 16)	311B0600	2
BOLT (Ref # 17)	110N0516	1
WASHER SPRING 5MM (Ref # 18)	461F0500	1
WASHER-PLAIN,5MM (Ref # 19)	410D0500	1
LAMP ASSY,TURN SIGNA (Ref # 20)	23040-034	1
SCREW-PAN HEAD,4X35 (Ref # 21)	220E0435A	1
LENS-SIGNAL LAMP (Ref # 23)	23048-1024	2
GASKET,TURN SIG LAMP (Ref # 24)	23050-002	1
BRACKET-TURN SIG LAM (Ref # 30)	23078-001	1
DAMPER RUBBER (Ref # 31)	92075-128	1
COLLAR (Ref # 32)	92027-147	1
DAMPER RUBBER,SIG LM (Ref # 33)	92075-158	1
LEAD WIRE,SIGNAL LAM (Ref # 34)	26011-063	1
WASHER,PLAIN (Ref # 35)	92022-239	1

1976 900 LTD PARTS LIST

TURN SIGNALS

ITEM NAME	PART NUMBER	QUANTITY
WASHER SPRING 10MM (Ref # 36)	461F1000	1
NUT 10MM (Ref # 37)	315B1000	1