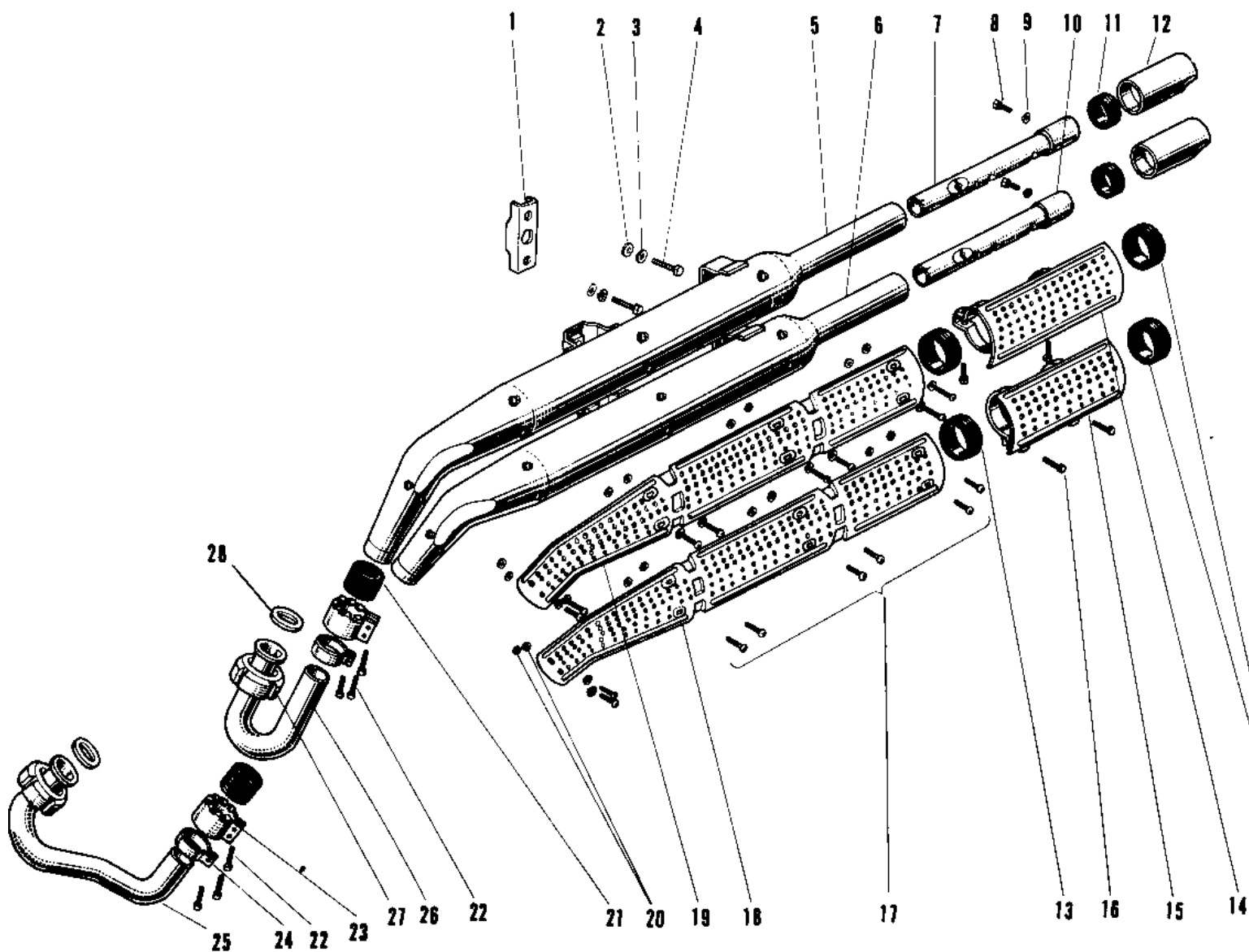


1966 A1 PARTS DIAGRAM

MUFFLER A1SS SEPARATE TYPE



1966 A1 PARTS LIST

MUFFLER A1SS SEPARATE TYPE

ITEM NAME	PART NUMBER	QUANTITY
BRACKET MUFFLER (Ref # 1)	18061-026	1
WASHER PLAIN 8MM (Ref # 2)	410B0800	1
WASHER SPRING 8MM (Ref # 3)	461F0800	1
BOLT,8X20 (Ref # 4)	115G0820	1
MUFFLER ASSY UPPER (Ref # 5,7~9)	18002-062	1
MUFFLER ASSY LOWER (Ref # 6,8~10)	18003-026	1
BAFFLE TUBE UPPER (Ref # 7)	18033-016	1
BOLT-UPSET,6X12 (Ref # 8)	112G0612	1
WASHER SPRING 6MM (Ref # 9)	461F0600	1
BAFFLE TUBE LOWER (Ref # 10)	18033-017	1
RUBBER SEAL (Ref # 11)	18068-003	1
TAIL PIECE (Ref # 12)	18048-004	1
BAND RUBBER 40MM (Ref # 13)	92072-025	1
COVER UPPER TAIL PIPE (Ref # 14)	18057-017	1
COVER LOWER TAIL PIPE (Ref # 15)	18057-018	1
SCREW PAN HEAD 6X16 (Ref # 16)	220B0616	1
SCREW PAN HEAD 6X6 (Ref # 17)	220E0606	1
COVER MUFFLER LOWER (Ref # 18)	18057-010	1
COVER MUFFLER UPPER (Ref # 19)	18057-009	1
INSULATOR HEAT (Ref # 20)	92065-024	1
INSULATOR (Ref # 20)	18065-006	1
CONNECTOR MUFFLER (Ref # 21)	18043-010	1
SCREW PAN HEAD 6X25 (Ref # 22)	220B0625	1
HOLDER MUFFLER CONECT (Ref # 23)	18044-008	1
HOLDER MUFFLER CONECT (Ref # 24)	18044-007	1
PIPE EXHAUST R.H (Ref # 25)	18049-044	1
PIPE EXHAUST L.H (Ref # 26)	18049-030	1
CLAMP EXHAUST PIPE (Ref # 27)	18069-033	1
GASKET EXHAUST PIPE (Ref # 28)	18067-008	1