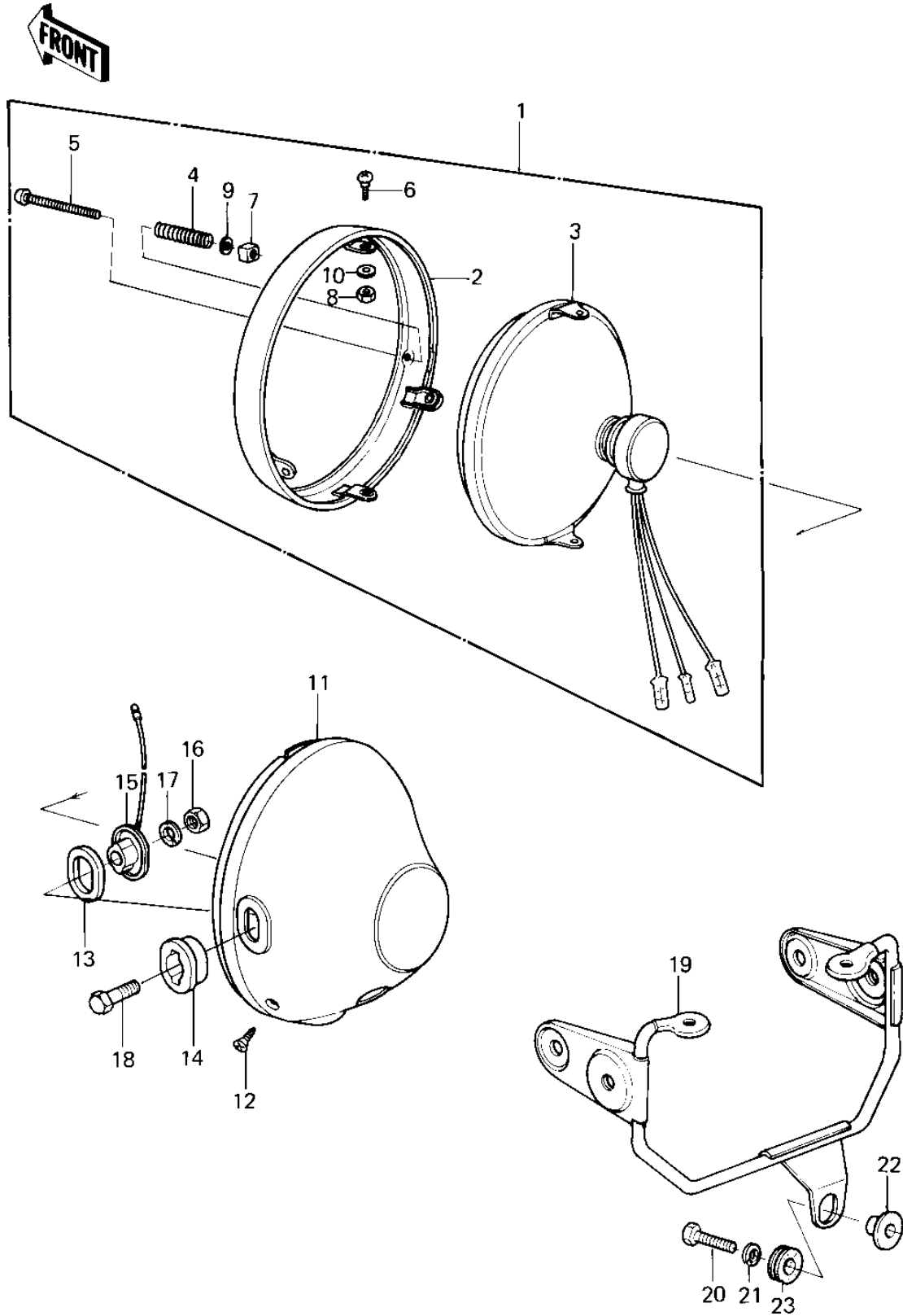


1980 KZ250 PARTS DIAGRAM

HEADLIGHT ('80 D1)



1980 KZ250 PARTS LIST

HEADLIGHT ('80 D1)

ITEM NAME	PART NUMBER	QUANTITY
LAMP UNIT,HEAD (Ref # 1)	23003-025	1
RIM-HEAD LAMP (Ref # 2)	23006-034	1
SEALED BEAM UNIT (Ref # 3)	23007-043	1
SPRING FOCUS ADJUST (Ref # 4)	23014-005	1
SCREW FORCUS ADJUST (Ref # 5)	23019-021	1
SCREW-PAN HEAD,5X12 (Ref # 6)	23019-023	1
NUT,4MM (Ref # 7)	23020-018	1
NUT,HEAD LAMP RIM FIT (Ref # 8)	23020-023	1
WASHER (Ref # 9)	23021-004	1
WASHER-PLAIN,5MM (Ref # 10)	23021-012	1
BODY,HEAD LAMP BLACK (Ref # 11)	23005-1013	1
SCREW,PAN HEAD,5X14 (Ref # 12)	23019-022	1
DAMPER RUBBER A (Ref # 13)	23066-001	1
DAMPER RUBBER (Ref # 14)	23066-005	1
COLLAR (Ref # 15)	23076-005	1
NUT 10MM (Ref # 16)	315B1000	1
WASHER SPRING 10MM (Ref # 17)	461F1000	1
BOLT,HEX HEAD,10X30 (Ref # 18)	92007-041	1
BRACKET,HEAD LAMP (Ref # 19)	11034-1691	1
BOLT-UPSET (Ref # 20)	112G0625	1
WASHER SPRING 6MM (Ref # 21)	461F0600	1
COLLAR (Ref # 22)	92027-251	1
DAMPER RUBBER,RR FENR (Ref # 23)	92075-209	1