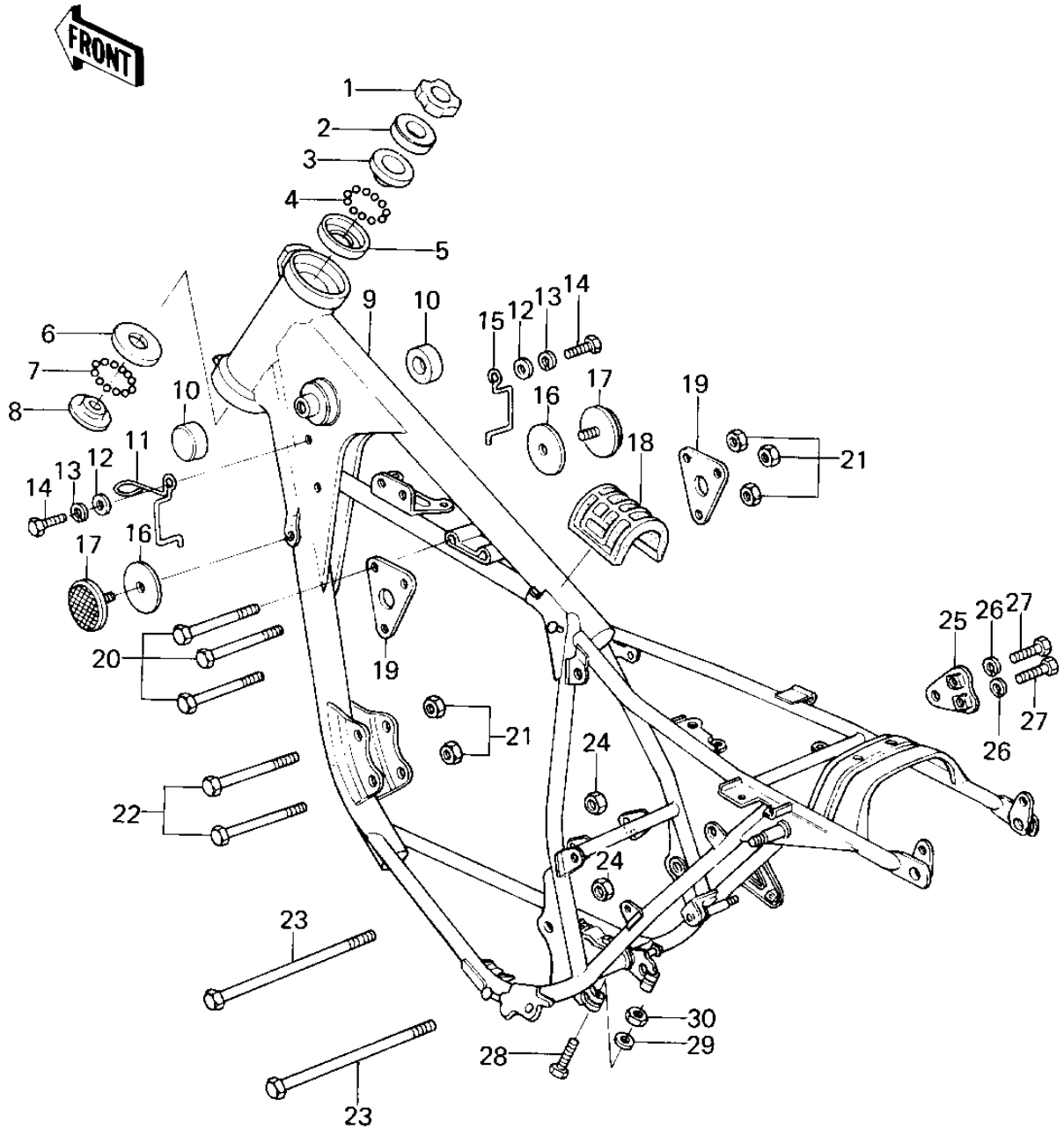


1978 KZ200 PARTS DIAGRAM

FRAME/FRAME FITTINGS



1978 KZ200 PARTS LIST

FRAME/FRAME FITTINGS

| ITEM NAME | PART NUMBER | QUANTITY |
|----------------------------------|-------------|----------|
| NUT,STEERING STEM (Ref # 1) | 92090-022 | 1 |
| CAP,STEERING STEM (Ref # 2) | 46098-012 | 1 |
| CONE,STRG STM BRG,UP (Ref # 3) | 92047-014 | 1 |
| BALL STEEL 3/16' (Ref # 4) | 600A0600 | 1 |
| RACE,STRG STM BEARING (Ref # 5) | 92048-009 | 1 |
| RACE STEERING BEARING (Ref # 6) | 92048-005 | 1 |
| BALL STEEL 1/4' (Ref # 7) | 600A0800 | 1 |
| CONE STERNG BERG LOW (Ref # 8) | 92047-010 | 1 |
| FRAME (Ref # 9) | 32002-165 | 1 |
| DAMPER RUBBER-FL TANK (Ref # 10) | 92075-101 | 1 |
| CLAMP (Ref # 11) | 92037-202 | 1 |
| WASHER PLAIN 6MM (Ref # 12) | 411B0600 | 1 |
| WASHER SPRING 6MM (Ref # 13) | 461F0600 | 1 |
| BOLT-UPSET,6X12 (Ref # 14) | 112G0612 | 1 |
| CLAMP (Ref # 15) | 92037-203 | 1 |
| DAMPER RUBBER,REFLECT (Ref # 16) | 92094-011 | 1 |
| REFLECTOR,REFLEX (Ref # 17) | 28012-016 | 1 |
| DAMPER RUBBER (Ref # 18) | 92075-284 | 1 |
| PLATE,ENGINE HEAD (Ref # 19) | 32030-069 | 1 |
| BOLT,FLANGED,8X60 (Ref # 20) | 92001-1581 | 1 |
| NUT,LOCK,8MM (Ref # 21) | 92017-013 | 1 |
| BOLT,HEX HEAD,8X65 (Ref # 22) | 110B0865 | 1 |
| BOLT, FLANGED, 10X110 (Ref # 23) | 92001-1602 | 1 |
| NUT,LOCK,10MM (Ref # 24) | 92019-021 | 1 |
| BRACKET,ENGINE (Ref # 25) | 32029-1008 | 1 |
| WASHER SPRING 8MM (Ref # 26) | 461F0800 | 1 |
| BOLT-SMALL-UPSET,8X16 (Ref # 27) | 115G0816 | 1 |
| BOLT 6X35 (Ref # 28) | 110R0635 | 1 |
| WASHER PLAIN 6MM (Ref # 29) | 410B0600 | 1 |

1978 KZ200 PARTS LIST

FRAME/FRAME FITTINGS

| ITEM NAME | PART NUMBER | QUANTITY |
|-------------------------|-------------|----------|
| NUT,LOCK 6MM (Ref # 30) | 92017-014 | 1 |