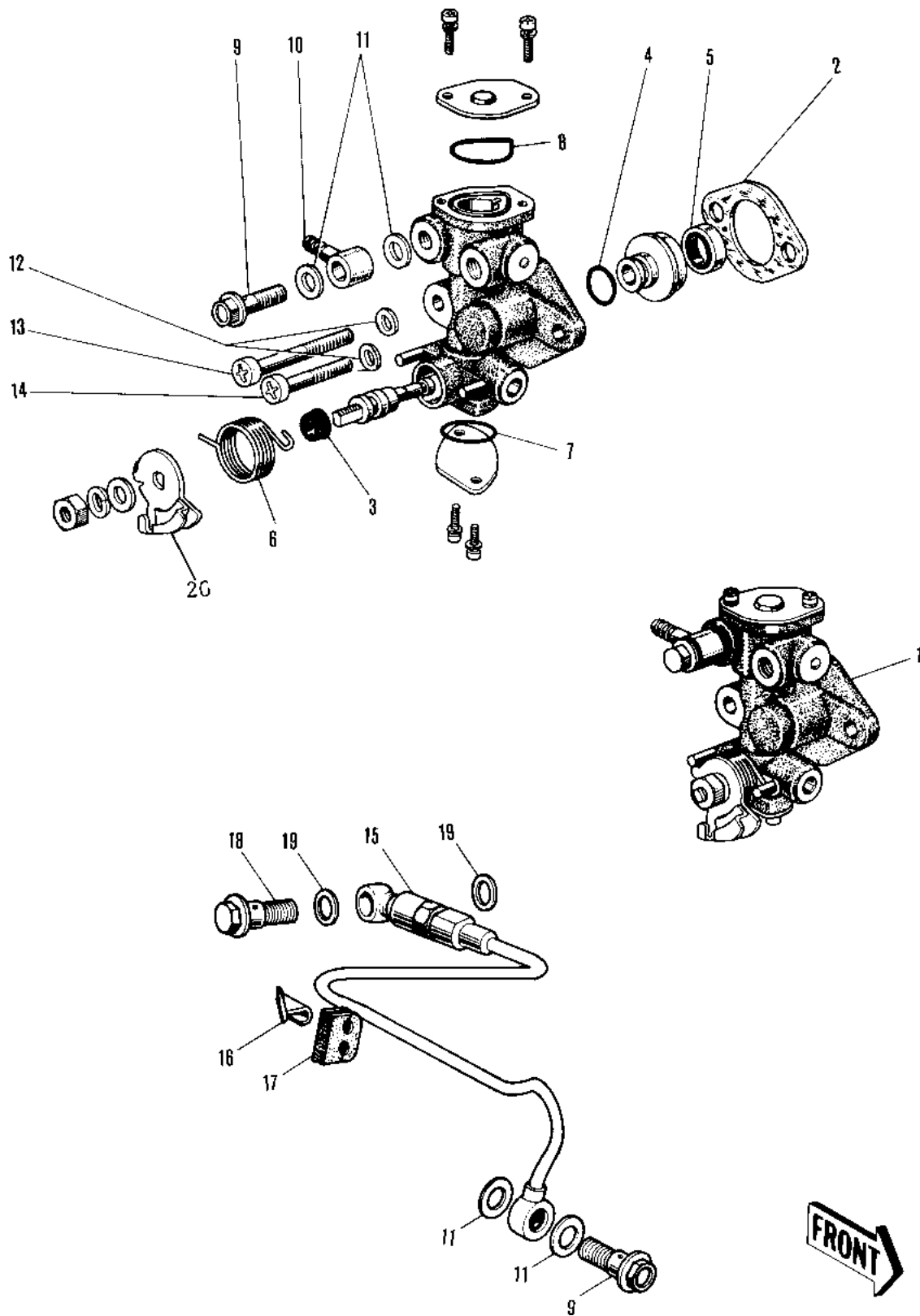


## 1972 PARTS DIAGRAM

OIL PUMP ('71-'75)



## 1972 PARTS LIST

OIL PUMP ('71-'75)

| ITEM NAME                        | PART NUMBER | QUANTITY |
|----------------------------------|-------------|----------|
| OIL PUMP ASSY (Ref # 1)          | 16082-1004  | 2        |
| GASKET,OIL PUMP (Ref # 2)        | 11060-1160  | 1        |
| SEAL-OIL,CAMSHAFT,"X" (Ref # 3)  | 92049-1294  | 1        |
| "O" RING,OIL PUMP SHT (Ref # 4)  | 16090-002   | 1        |
| OIL SEAL OIL PUMP SHT (Ref # 5)  | 16091-001   | 1        |
| SPRING OIL PUMP LEVER (Ref # 6)  | 16093-004   | 1        |
| "O" RING,LOWER CAP (Ref # 7)     | 16090-003   | 1        |
| "O" RING,UPPER CAP (Ref # 8)     | 16088-002   | 1        |
| BOLT-BANJO,6MM (Ref # 9)         | 92060-013   | 1        |
| CONNECTOR BANJO (Ref # 10)       | 92061-009   | 1        |
| WASHER OIL PUMP BANJO (Ref # 11) | 92022-077   | 1        |
| WASHER OIL PUMP (Ref # 12)       | 92022-037   | 1        |
| SCREW PAN CROSS,5X28 (Ref # 13)  | 220B0528    | 1        |
| SCREW-PAN-CROS (Ref # 14)        | 220B0514    | 1        |
| PIPE-OIL (Ref # 15)              | 16134-015   | 1        |
| BRACKET-OIL PIPE (Ref # 16)      | 16068-006   | 1        |
| GROMMET (Ref # 17)               | 92071-049   | 1        |
| BOLT-BANJO (Ref # 18)            | 92060-015   | 1        |
| GASKET CHECK VALVE (Ref # 19)    | 92065-023   | 1        |
| LEVER-OIL PUMP CABLE (Ref # 20)  | 16096-009   | 1        |