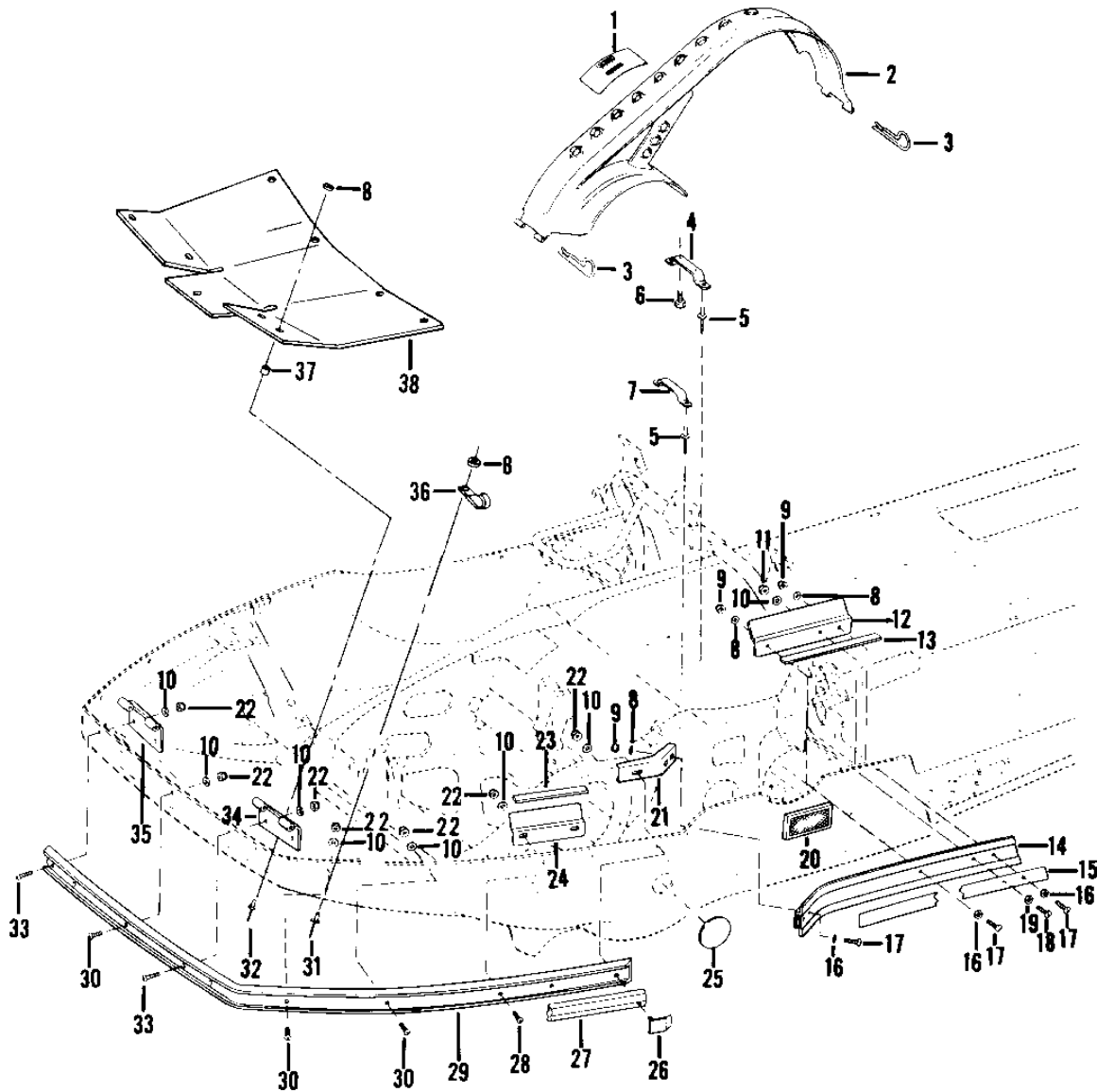


## 1980 Invader LTD 4/6 PARTS DIAGRAM

CHASSIS 1 OF 3



Ref No
1
2
3
4
5
6
7
8
9
10
11
12
13
14
15
16
17
18
19
20
21
22
23
24
25
26
27
28
29
30
31
32
33
34
35
36
37
38

SS440-B1

## 1980 Invader LTD 4/6 PARTS LIST

CHASSIS 1 OF 3

ITEM NAME	PART NUMBER	QUANTITY
LABEL-WARN-GUARD (Ref # 1)	56040-3501	1
GUARD-COMP-CONVERTER (Ref # 2)	39056-3501	1
PIN-HAIR (Ref # 3)	39092-3502	1
BRACKET-FUEL PUMP (Ref # 4)	11034-3559	1
RIVET (Ref # 5)	534YW0602	2
SCREW (Ref # 6)	92001-3520	1
COVER-FUEL TUBE (Ref # 7)	14025-3501	1
WASHER (Ref # 8)	92022-3539	1
NUT (Ref # 9)	350BA0600	1
WASHER (Ref # 10)	412EA0800	1
NUT (Ref # 11)	351BA0800	1
GUIDE-HOOD (Ref # 12)	13070-3508	1
GUIDE-COWL-RH (Ref # 12)	13070-3512	1
TRIM-SEAL (Ref # 13)	39145-3506	2
GUIDE-COWL-LH (Ref # 14)	13070-3510	1
GUIDE-COWL-RH (Ref # 14)	13070-3509	1
PATTERN-GUIDE (Ref # 15)	56027-3502	1
WASHER (Ref # 16)	92022-3524	1
SCREW (Ref # 17)	92009-3527	1
SCREW (Ref # 18)	250DH0812	1
WASHER (Ref # 19)	412EH0800	1
REFLECTOR-ASSY-RED (Ref # 20)	28001-3502	1
BRACE-CHASSIS LH (Ref # 21)	35009-3502	1
BRACE-CHASSIS RH (Ref # 21)	35009-3501	1
NUT (Ref # 22)	350BA0800	1
GUIDE-HOOD (Ref # 24)	13070-3507	1
PLUG-CONVERTER BOLT (Ref # 25)	92066-3503	1
CLAMP-BUMPER TRIM LH (Ref # 26)	92037-3505	1
CLAMP-BUMPER TRIM RH (Ref # 26)	92037-3504	1

## 1980 Invader LTD 4/6 PARTS LIST

CHASSIS 1 OF 3

ITEM NAME	PART NUMBER	QUANTITY
TRIM-RUBBER INSERT (Ref # 27)	53044-3501	1
SCREW (Ref # 28)	92009-3506	1
BUMPER-FRONT (Ref # 29)	39027-3501	1
SCREW (Ref # 30)	92009-3513	1
RIVET (Ref # 31)	535XX0604	1
RIVET-BLACK (Ref # 32)	535XW0608	1
SCREW (Ref # 33)	92009-3516	1
HINGE-LOWER LH (Ref # 34)	53009-3506	1
HINGE-LOWER RH (Ref # 35)	53009-3510	1
CLAMP-HARNESS-HEAD (Ref # 36)	92037-3511	1
SPACER (Ref # 37)	92026-3552	1
GUARD-HEAT SHIELD (Ref # 38)	55020-3502	1