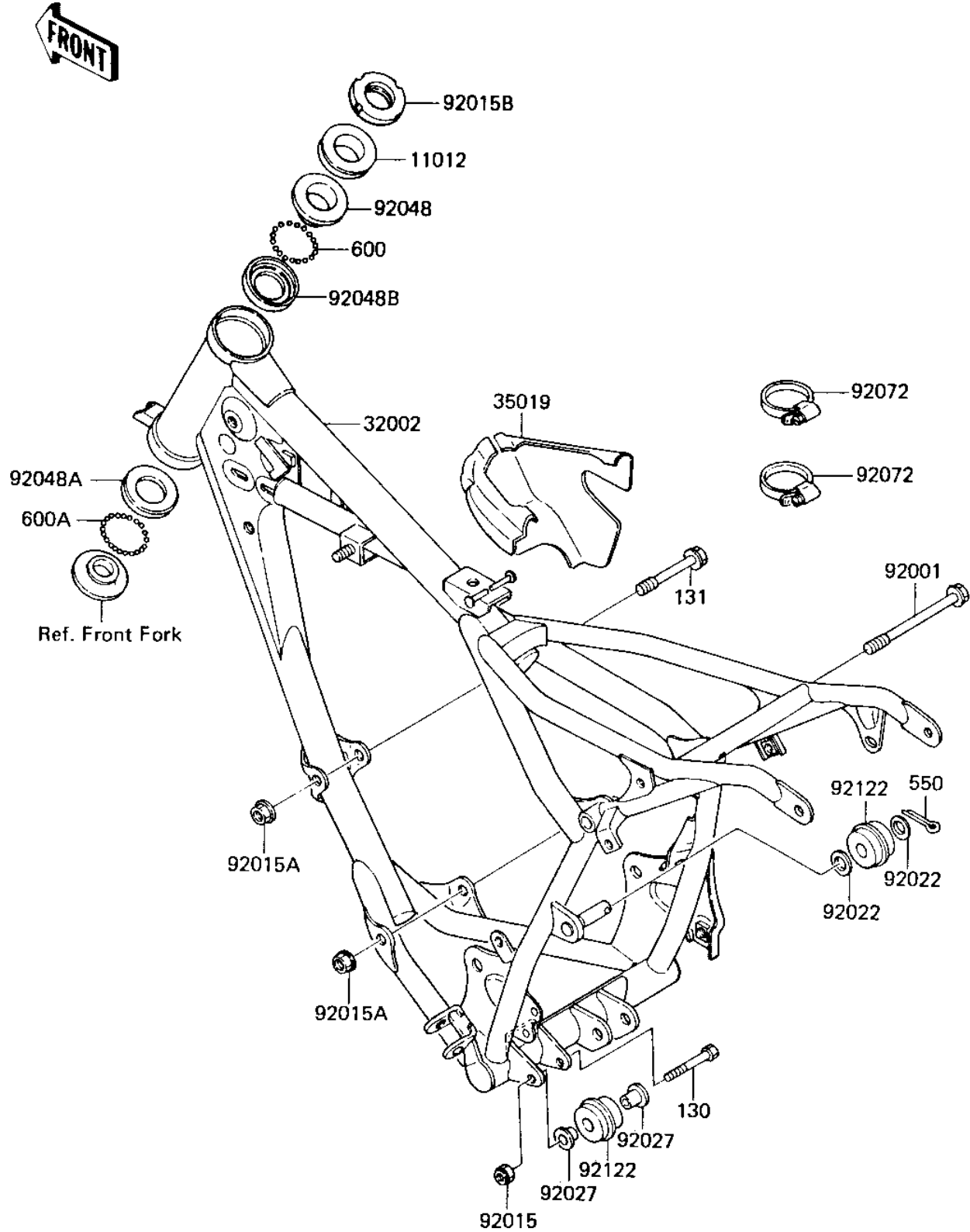


1984 KX™80 PARTS DIAGRAM

FRAME/FRAME FITTINGS

F2120-0178



1984 KX™80 PARTS LIST

FRAME/FRAME FITTINGS

| ITEM NAME | PART NUMBER | QUANTITY |
|--------------------------------------|-------------|----------|
| CAP,STEERING STEM (Ref # 11012) | 46098-018 | 1 |
| FRAME-COMP (Ref # 32002) | 32002-1659 | 1 |
| FLAP,AIR FILTER CASE (Ref # 35019) | 35019-1104 | 1 |
| BOLT,ENGINE MOUNT (Ref # 92001) | 92001-1367 | 1 |
| NUT-6MM (Ref # 92015) | 92015-1078 | 1 |
| NUT-8MM (Ref # 92015A) | 92015-1143 | 1 |
| NUT,STEERING LOCK,25M (Ref # 92015B) | 92015-1222 | 1 |
| WASHER,PLAIN (Ref # 92022) | 92022-239 | 1 |
| COLLAR,RADIATOR GUARD (Ref # 92027) | 92027-1183 | 1 |
| CONE,STRG STM BRG,UP (Ref # 92048) | 92047-014 | 1 |
| RACE STEERING BEARING (Ref # 92048A) | 92048-005 | 1 |
| RACE,STRG STM BEARING (Ref # 92048B) | 92048-009 | 1 |
| BANK,RESERVOIR TANK (Ref # 92072) | 92072-1091 | 1 |
| ROLLER,CHAIN GUIDE (Ref # 92122) | 92122-1030 | 1 |
| BOLT,FLANGED,6X40 (Ref # 130) | 130G0640 | 1 |
| BOLT 8X60 (Ref # 131) | 131G0860 | 1 |
| PIN,COTTER,2.5X15 (Ref # 550) | 550D2515 | 1 |
| BALL STEEL 3/16' (Ref # 600) | 600A0600 | 1 |
| BALL STEEL 1/4' (Ref # 600A) | 600A0800 | 1 |