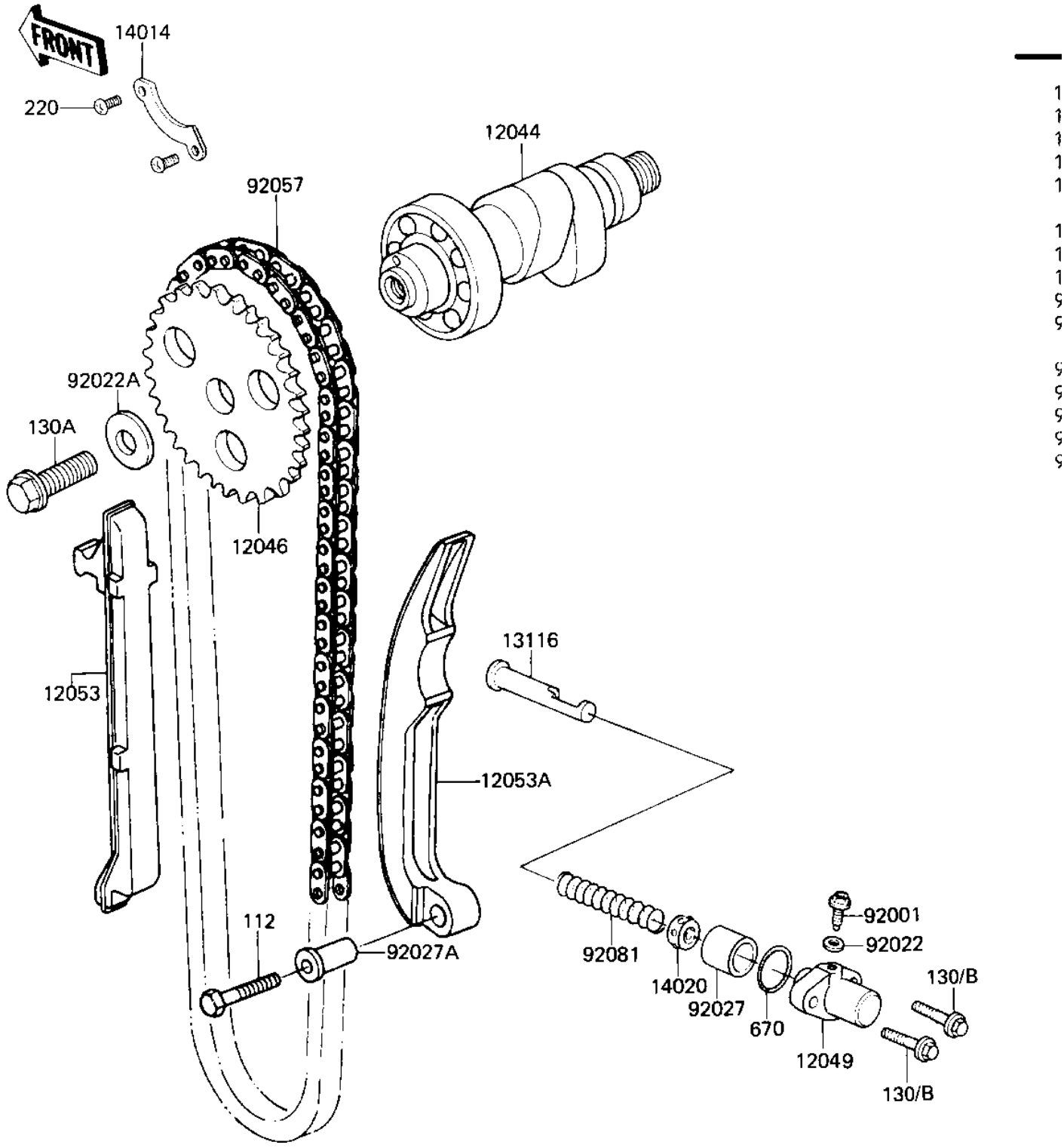


## 1984 Prairie® 250 PARTS DIAGRAM

CAMSHAFT/CHAIN/TENSIONER ('84-'85 C2/C3)

F1230-0030



## 1984 Prairie® 250 PARTS LIST

CAMSHAFT/CHAIN/TENSIONER ('84-'85 C2/C3)

ITEM NAME	PART NUMBER	QUANTITY
CAMSHAFT-VALVE (Ref # 12044)	12044-1053	1
SPROCKET,CAM CHAIN,32 (Ref # 12046)	12046-1037	1
TENSIONER,CAM CHAIN (Ref # 12049)	12049-1008	1
SLIPER,CAM CHAIN (Ref # 12053)	12053-023	1
SLIPER,CAM CHAIN (Ref # 12053A)	12053-024	1
ROD,PUSH,CAM CHAIN (Ref # 13116)	13116-1019	1
PLATE-POSITION (Ref # 14014)	14014-1030	1
RETAINER (Ref # 14020)	14020-1002	1
BELT,TENSIONER ADJUST (Ref # 92001)	92001-1155	1
WASHER OIL PUMP BANJO (Ref # 92022)	92022-077	1
WASHER,10X22X3 (Ref # 92022A)	92022-1365	1
COLLAR,TENSIONER (Ref # 92027)	92027-1273	1
COLLAR (Ref # 92027A)	92027-155	1
CHAIN,CAM (Ref # 92057)	21070-013	1
SPRING,TENSIONER (Ref # 92081)	92081-1105	1
BOLT-UPSET (Ref # 112)	112G0630	1
BOLT,FLANGED,6X25 (Ref # 130)	130G0625	1
BOLT-FLANGED,10X25 (Ref # 130A)	130G1025	1
SCREW PAN HEAD 6X10 (Ref # 220)	220B0610	1
"O" RING,21MM (Ref # 670)	670B2021	1